

## AISC Live Webinars

Thank you for joining our live webinar today.  
We will begin shortly. Please standby.

### T.R. Higgins Lecture

Gusset Plates: The Evolution of Simplified Design Models  
May 6, 2021



## AISC Live Webinars

Today's live webinar will begin shortly. Please stand by.

Today's audio will be broadcast through the internet. Please be sure to turn up the volume on your speakers.

Please type any questions or comments in the Q&A window.



## AISC Live Webinars

### AIA Credit

AISC is a Registered Provider with The American Institute of Architects Continuing Education Systems (AIA/CES). Credit(s) earned on completion of this program will be reported to AIA/CES for AIA members. Certificates of Completion for both AIA members and non-AIA members are available upon request.

This program is registered with AIA/CES for continuing professional education. As such, it does not include content that may be deemed or construed to be an approval or endorsement by the AIA of any material of construction or any method or manner of handling, using, distributing, or dealing in any material or product.

Questions related to specific materials, methods, and services will be addressed at the conclusion of this presentation.



## AISC Live Webinars

### Copyright Materials

This presentation is protected by US and International Copyright laws. Reproduction, distribution, display and use of the presentation without written permission of AISC is prohibited.

© The American Institute of Steel Construction 2021

The information presented herein is based on recognized engineering principles and is for general information only. While it is believed to be accurate, this information should not be applied to any specific application without competent professional examination and verification by a licensed professional engineer. Anyone making use of this information assumes all liability arising from such use.



## AISC Live Webinars

### Course Description

Gusset Plates: The Evolution of Simplified Design Models  
May 6, 2021

In the design of steel structures, each member is isolated and evaluated using the appropriate AISC *Specification* requirements. Similarly, gusset plate connections can be complex structural systems that are separated into several elements for design purposes. The behavior of these gusset plate elements can be captured with simple design models, where portions of the plate are treated as structural members with well-documented and predictable behavior. This webinar will provide a brief history of gusset plate design methods and their evolution over the last century. It will cover current design provisions where column and beam models are used to predict the strength of gusset plates in various configurations, including wrap-around gusset plates.


The session will wrap up with a preview of a new method to predict the compression strength of gusset plates using notional loads.



## AISC Live Webinars


### Learning Objectives

- Gain an historical perspective on gusset plate design.
- List current design methods for gusset plates in various configurations.
- Identify recent research developments and new design methods for gusset plates.
- Explain the behavior of gusset plates as it relates to stability, and how stability is ensured through the design methods.



BO  
DOWSWELL  
PE, PhD  
ARC International, LLC

Gusset Plates:  
The Evolution of Simplified  
Design Models



### 2020 T.R. Higgins Lectureship Award JURY

- Robert Chmielowski, Magnusson Klemencic Associates
- Chris Crosby, Cianbro Fabrication
- Carol Drucker, Drucker Zajdel Structural Engineers, Inc.
- Mike Engelhardt, University of Texas at Austin
- Louis F. Geschwindner, Penn State University
- Mike Marian, PVS Structures



## Introduction



## INTRODUCTION



**Vertical Bracing**



10

## INTRODUCTION



**Trusses**



11

## INTRODUCTION



**Horizontal Bracing**



12

## INTRODUCTION

### Design Zones

For design, gusset plates are separated into zones that are treated independently.

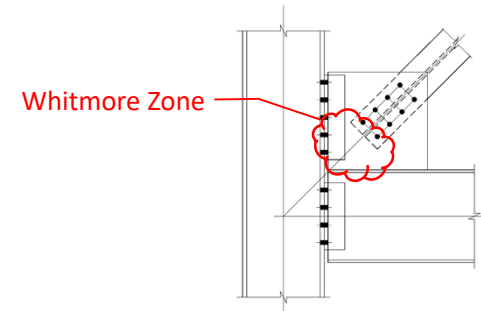
- Whitmore zone
- Edge interfaces



13

## INTRODUCTION

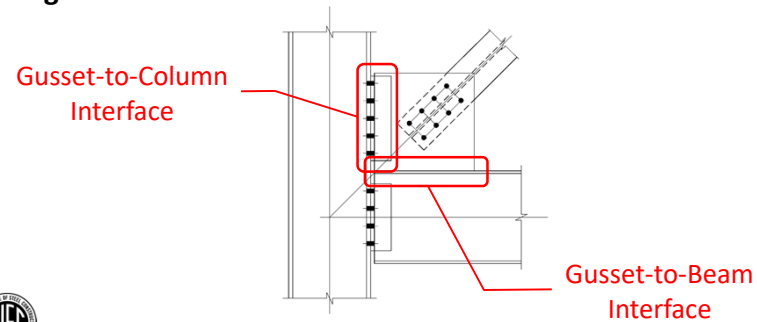
### Whitmore Zone



14

## INTRODUCTION

### Edge Interfaces



15

## INTRODUCTION

### Presentation Topics

- Design models
- Whitmore zone
- Wrap-around gusset plates



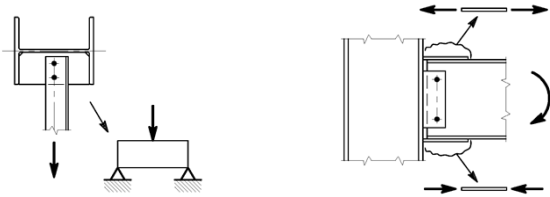
16

## Design Models




### DESIGN MODELS

For design, connections are separated into independent elements. Each element is modeled as a member with predictable behavior.



**Flexural Elements**      **Axial Elements**




18

### DESIGN MODELS

The equations in AISC *Specification* Chapters D, E, F, G and H were developed for members.


Can these equations be used for connection elements?



19

## Design Models

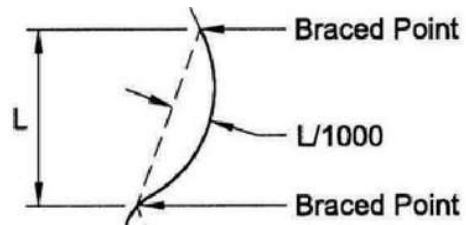
### Geometric Imperfections



## DESIGN MODELS: GEOMETRIC IMPERFECTIONS

### Member Geometric Imperfections

2016 AISC *Code of Standard Practice* for compression members:  
out-of-straightness tolerance =  $L/1,000$



21

## DESIGN MODELS: GEOMETRIC IMPERFECTIONS

### Plate Geometric Imperfections

- Plate out-of-flatness ratios are greater than member out-of-straightness ratios
- The ASTM A6 plate tolerance is approximately equivalent to a permissible out-of-flatness of  $L/480$
- ASTM A6 is applicable only to manufacturing tolerances and does not address fabrication and erection effects



22

## DESIGN MODELS: GEOMETRIC IMPERFECTIONS



Alan Wood Iron & Steel Company, Philadelphia, PA. (pre-1920)


23

## Design Models


## Buckling



DESIGN MODELS: BUCKLING




Flexural Buckling




25

DESIGN MODELS: BUCKLING




Flexural Buckling




Local/Plate Buckling

26


DESIGN MODELS: BUCKLING



Flexural Buckling




Local/Plate Buckling




Shear Buckling

27


DESIGN MODELS: BUCKLING



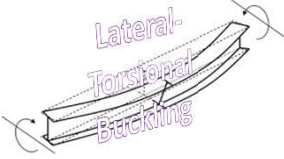
Flexural Buckling



Local/Plate Buckling



Shear Buckling



Lateral-Torsional Buckling

28

### DESIGN MODELS: BUCKLING

Distortional Buckling

Local/Plate Buckling

Flexural Buckling

Shear Buckling

Lateral-Torsional Buckling

29

### DESIGN MODELS: BUCKLING

#### Design Model Development

- Identify the primary buckling mode that best fits the buckled shape
- Base the design model on the primary buckling mode
- If needed, consider the effect of secondary buckling modes with empirical factors
- Rectangular connection elements
  - Compression: flexural buckling
  - Flexure: lateral-torsional buckling

30

### DESIGN MODELS: BUCKLING

#### Flexural Buckling

The AISC column curve was developed using various shapes

Reidar Bjorhovde [1987]

Bjorhovde, R. (1972), *Deterministic and probabilistic approaches to the strength of steel columns*, Ph.D. dissertation, Lehigh University.

31

### DESIGN MODELS: BUCKLING

Tests on rectangular plate columns compare well with the AISC column curve

— AISC Column Curve  
 — LRFD Available Strength  
 • Experimental

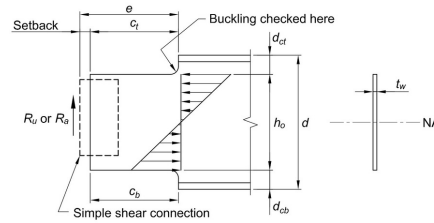
32

## DESIGN MODELS: BUCKLING

### Lateral-Torsional Buckling

Cheng et al. (1984) developed design equations for the local strength of double-coped beams by modeling the coped region as a rectangular beam.

Joseph Yura  
[1974]

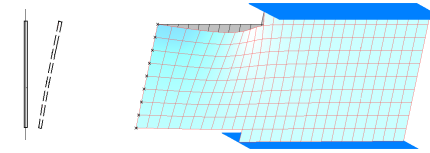


Cheng, J.J., Yura, J.A., and Johnson, C.P. (1984), "Design and Behavior of Coped Beam," Ferguson Lab Report, The University of Texas at Austin.

33

## DESIGN MODELS: BUCKLING

The primary buckled shape is characterized by lateral translation and torsional rotation, which is indicative of lateral-torsional buckling.



34

Whitmore Zone



Whitmore Zone

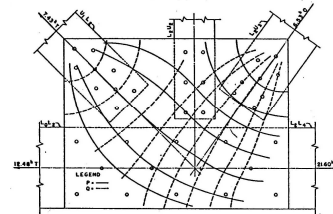
Stress Trajectories



### WHITMORE ZONE: STRESS TRAJECTORIES

#### Whitmore (1952)

- Warren truss joint
- 1/4-scale model
- Experimental/strain gage data
- 1/8 in. thick aluminum plates
- 30° stress trajectory

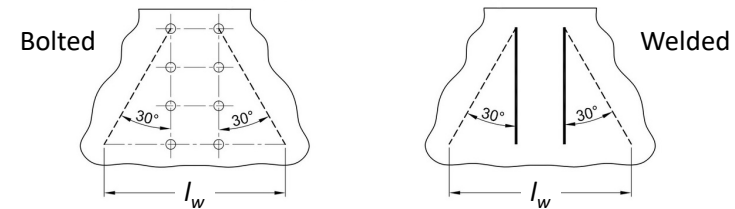


Whitmore, R.E. (1952), "Experimental Investigation of Stresses in Gusset Plates," University of Tennessee Engineering Experiment Station Bulletin No. 16. 37

### WHITMORE ZONE: STRESS TRAJECTORIES

#### Design: AISC Manual Part 9

The effective width,  $l_w$ , is based on the Whitmore Section, which is defined by a 30° stress trajectory



38

## Whitmore Zone Stability

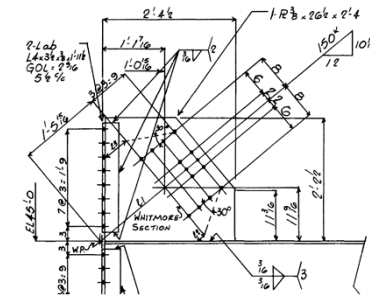


### WHITMORE ZONE: STABILITY

#### Equivalent Column Model (Thornton, 1984)

- The gusset plate is modeled as a rectangular column
- The column width is defined by the Whitmore Section
- Column curve in AISC Specification Section E3

William Thornton  
 [1995]



Thornton, W.A. (1984), "Bracing Connections for Heavy Construction," *Engineering Journal*, AISC.

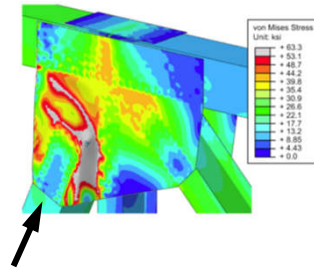
40

### WHITMORE ZONE: STABILITY

White et al. (2013)

- Inelastic FE models
- Yielding at the Whitmore zone

Donald White  
 [2009]



White, D.W., Leon, R.T., Kim, Y.D., Mentes, Y. and Bhuiyan, M.T.R. (2013), *Finite Element Simulation and Assessment of the Strength Behavior of Riveted and Bolted Gusset-Plate Connections in Steel Truss Bridges*, Final Report Prepared for FHA and NCHRP TRB.

41

### WHITMORE ZONE: STABILITY

Factors Affecting Stability at the Whitmore Zone

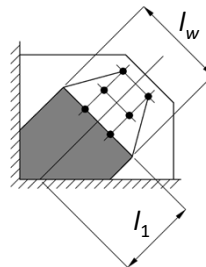
- Stress is non-uniform across the Whitmore section
- Frame action forces are neglected
- The Poisson effect is neglected
- The AISC column curve was not developed for plates
- The stress trajectory angle increases with inelastic potential



42

### WHITMORE ZONE: STABILITY

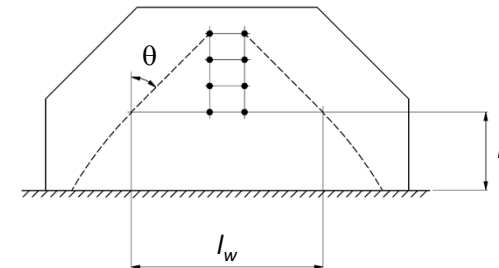
- The out-of-plane restraint provided by the portions of the plate outside the boundaries of the effective width is neglected



43

### WHITMORE ZONE: STABILITY

- The stress continues to spread out beyond the last fastener



44

WHITMORE ZONE: STABILITY



Alan Wood Iron & Steel Company, Philadelphia, PA. (pre-1920)



45

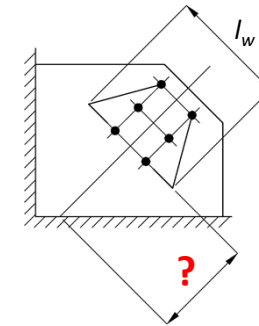
WHITMORE ZONE: STABILITY

Effective Length

$$L_c = KL$$

$K$  = effective length factor = ?

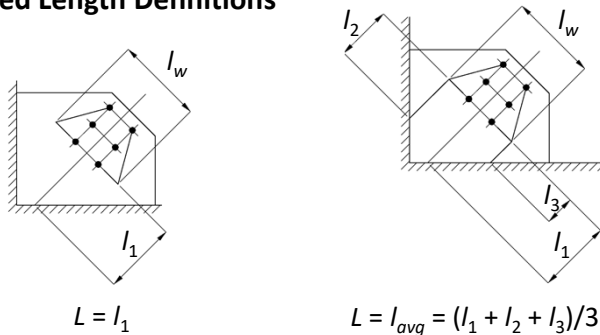
$L$  = unbraced length = ?



46

WHITMORE ZONE: STABILITY

Unbraced Length Definitions



47

WHITMORE ZONE: STABILITY

Effective Length Factors

For columns, effective length factors are selected based on the buckled shape considering the end conditions

TABLE C-A-7.1  
 Approximate Values of Effective Length Factor,  $K$

	(a)	(b)	(c)	(d)	(e)	(f)
Buckled shape of column as shown by dashed line						
Theoretical $K$ value	0.5	0.7	1.0	1.0	2.0	2.0
Recommended design value when ideal conditions are approximated	0.65	0.80	1.2	1.0	2.1	2.0
End condition code						



48



### WHITMORE ZONE: STABILITY

For gusset plates, effective length factors are:

- Dependent on the definition of  $L$
- Dependent on the gusset plate geometry
- Calibrated with the AISC/AASHTO column curve
- Dependent on  $\phi$ 
  - Calibrated to a target reliability index,  $\beta$ , of 4.0 (AISC) or 4.5 (AASHTO)
  - Calibrated at a live-to-dead load ratio,  $LL/DL$ , of 3.0 (AISC) or 6.0 (AASHTO)



49

### WHITMORE ZONE: STABILITY

For Corner Gusset Plates

Effective lengths				
Reference	$L$	$K$	$\phi$	$\beta^a$
Thornton (1984)	$l_{avg}$	0.65	0.85	3.60
Gross and Cheok (1989)	$l_{avg}$	0.50	0.85	3.18
White et al. (2013)	$l_1$	0.35	0.75	3.92
AASHTO (2017)	$l_1$	0.50	0.75	4.76
Current Statistical Analysis	$l_1$	0.50	0.90	4.01

<sup>a</sup>Based on  $LL/DL = 3$

50

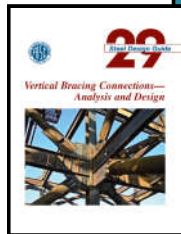
### WHITMORE ZONE: STABILITY

For Other Gusset Plate Shapes

Muir and Thornton  
(2014)

Larry Muir [2014]

William Thornton  
[1995]



Dowswell  
(2006, 2012)

Dowswell, B. (2006), "Effective Length Factors for Gusset Plate Buckling," *Engineering Journal*, AISC.  
 Dowswell, B. (2012), "Effective Length Factors for Chevron Gusset Plates," *Engineering Journal*, AISC.

51

## Wrap-Around Gusset Plates



### WRAP-AROUND GUSSET PLATES

53

### WRAP-AROUND GUSSET PLATES

**Design**

- Each leg is modeled independently
- Rectangular beam model
- Limit states
  - Shear (AISC Spec. Section J4.2)
  - Flexure (AISC Spec. Section F11)

54

### WRAP-AROUND GUSSET PLATES

**Required Loads**

- Legs are subject to shear and flexure
- Linearly-varying moment diagram
- Maximum moments occur at the reentrant corner

Figure drawn by Eric Bolin

55

### WRAP-AROUND GUSSET PLATES

- For Leg 1:
 
$$M_{r1} = P_{r1}e_2$$
- For Leg 2:
 
$$M_{r2} = P_{r2}e_1$$

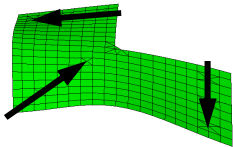

$P_{r1}, P_{r2}$  = force components  
 $e_1, e_2$  = cutout dimensions

56


### WRAP-AROUND GUSSET PLATES

**Stability**

The primary buckled shape is characterized by lateral translation and torsional rotation, which is indicative of lateral-torsional buckling.

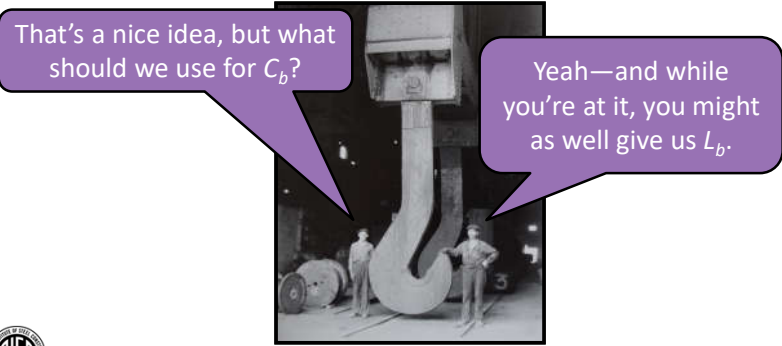
Design for flexural yielding and lateral-torsional buckling per AISC Spec. Section F11.



Specimen 7C


57

### WRAP-AROUND GUSSET PLATES



That's a nice idea, but what should we use for  $C_b$ ?

Yeah—and while you're at it, you might as well give us  $L_b$ .



Otis Steel, Cleveland, OH. H. Grendzinski and Steven Roth

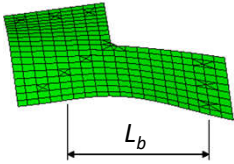
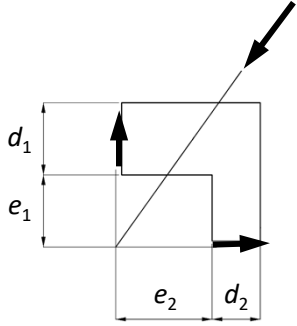

58

### WRAP-AROUND GUSSET PLATES

**Brace Compression Loads**

$$L_{b1} = e_2 + \frac{d_2}{2} \quad L_{b2} = e_1 + \frac{d_1}{2}$$


$C_b = 1.00$

59

### CONCLUSIONS

- Connections can be separated into zones that are designed independently
- Each connection element is modeled as a member with predictable behavior
- Buckling design models for rectangular connection elements are based on the primary buckling mode
  - Compression: flexural buckling
  - Flexure: lateral-torsional buckling



60

## QUESTIONS?



61

## PDH Certificates

- Reporting site (URL will be provided in the forthcoming email).
- Username: Same as AISC website username.
- Password: Same as AISC website password.



AISC | Thank you

