

AISC Live Webinars

Thank you for joining our live webinar today.
We will begin shortly. Please standby.

Lateral Load Transfer From Diaphragms to Resisting Elements

Part 1: Diaphragm Components & Connection to Resisting Elements

August 26, 2021



**Smarter.
Stronger.
Steel.**

AISC Live Webinars

Today's live webinar will begin shortly. Please stand by.

Today's audio will be broadcast through the internet. Please be sure to turn up the volume on your speakers.

Please type any questions or comments in the Q&A window.



**Smarter.
Stronger.
Steel.**

AISC Live Webinars

AIA Credit

AISC is a Registered Provider with The American Institute of Architects Continuing Education Systems (AIA/CES). Credit(s) earned on completion of this program will be reported to AIA/CES for AIA members. Certificates of Completion for both AIA members and non-AIA members are available upon request.

This program has been submitted to AIA/CES for continuing professional education. As such, it does not include content that may be deemed or construed to be an approval or endorsement by the AIA of any material of construction or any method or manner of handling, using, distributing, or dealing in any material or product.

Questions related to specific materials, methods, and services will be addressed at the conclusion of this presentation.



AISC Live Webinars

Copyright Materials

This presentation is protected by US and International Copyright laws. Reproduction, distribution, display and use of the presentation without written permission of AISC is prohibited.

© The American Institute of Steel Construction 2021

The information presented herein is based on recognized engineering principles and is for general information only. While it is believed to be accurate, this information should not be applied to any specific application without competent professional examination and verification by a licensed professional engineer. Anyone making use of this information assumes all liability arising from such use.



AISC Live Webinars

Course Description – Submitted for AIA CE Credit

Lateral Load Transfer From Diaphragms to Resisting Elements
Part 1 – Diaphragm Components & Connection to Resisting Elements
August 26, 2021

This two-part webinar will examine how loads flow through diaphragms and horizontal trusses to the vertical elements of the lateral force-resisting system. The first session of this two-part webinar will begin with a review of diaphragms and their components and the ASCE 7 provisions pertaining to diaphragms. Several case studies will be discussed to demonstrate effective detailing solutions for connecting to various types of lateral force-resisting systems.



AISC Live Webinars

Learning Objectives – Submitted for AIA CE Credit

- List the components and force effects that should be considered in the safe design of diaphragms.
- Explain why ASCE 7 prescribes different seismic lateral loads for the design of diaphragms than for the design of the lateral force-resisting system vertical elements.
- Identify building configurations that can result in significant transfer forces, which must be accounted for in the structural design.
- Describe effective detailing practices for connecting diaphragm collectors to braced frames and shear walls.



Lateral Load Transfer From Diaphragms to Resisting Elements

Part 1 – Diaphragm Components & Connection to Resisting Elements



Thomas R. Meyer, SE, PE
Principal
Magnusson Klemencic Associates
Seattle, Washington



Lateral Load Transfer From Diaphragms to Resisting Elements

- The Role of Diaphragms
- Diaphragm Components
- ASCE Seismic Design Force Provisions
 - Diaphragms
 - Collectors
- Diaphragms to Shear Walls
- Diaphragms to Boundary Elements
- Boundary Element to Boundary Element
- Collectors to Shear Walls

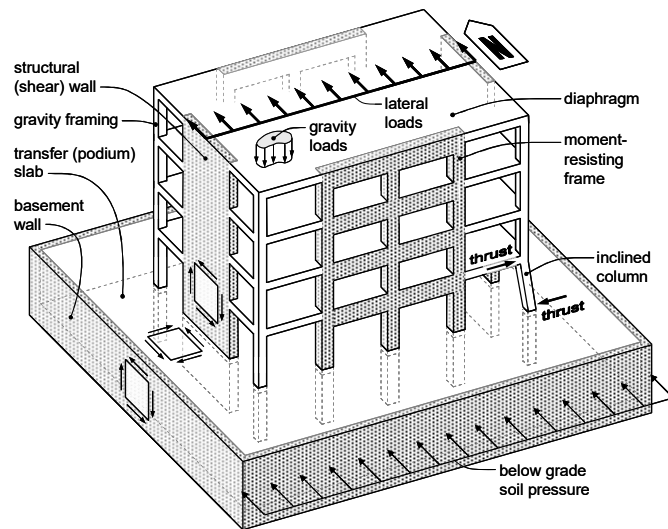


The Role of Diaphragms



The Role of Diaphragms

- Gravity Forces
- Inertial Forces
- Wind Forces
- Transfer Forces
- Thrust from Inclined Columns



Diaphragm Components



11

Diaphragm Components

AISC 360, Section B3.5

Design of Diaphragms and Collectors

Diaphragms and collectors shall be designed for forces that result from loads as stipulated in Section B2. They shall be designed in conformance with the provisions of Chapters C through K, as applicable.



12



Diaphragm Components

ASCE 7, Section 12.10.1

Diaphragms shall be designed for both the shear and bending stresses resulting from design forces. At diaphragm discontinuities, such as reentrant corners, the design shall ensure that dissipation or transfer of edge (chord) forces combined with other forces in the diaphragm is within shear and tension capacity of the diaphragm.



13

Diaphragm Components

ASCE 7, Section 12.10.1

Diaphragms shall be designed for both the shear and bending stresses resulting from design forces. At diaphragm discontinuities, such as reentrant corners, the design shall ensure that dissipation or transfer of edge (chord) forces combined with other forces in the diaphragm is within shear and tension capacity of the diaphragm.

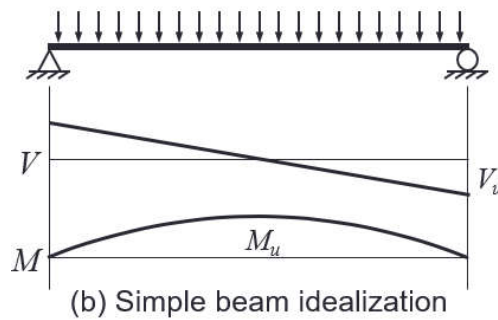
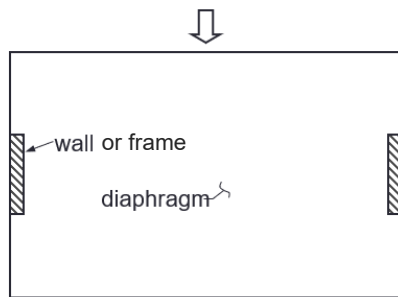


14



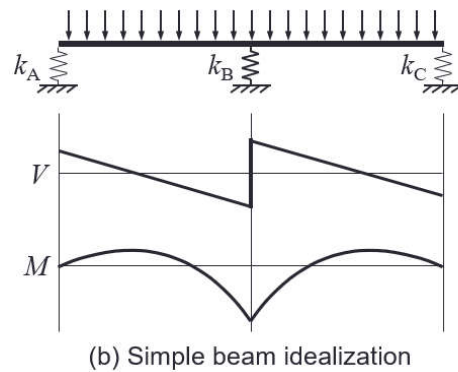
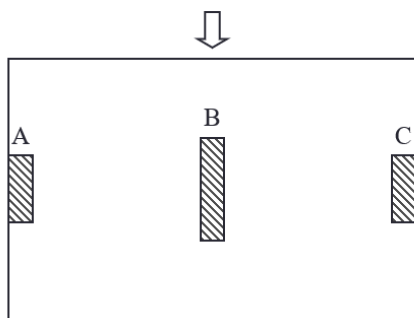
Diaphragm Components

Diaphragm Idealization



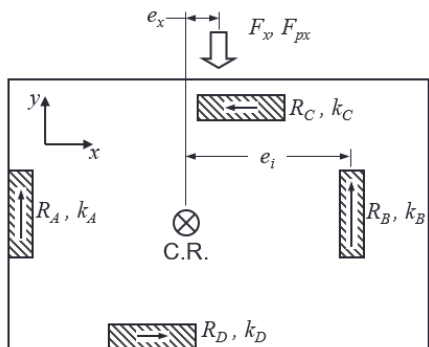
Diaphragm Components

Diaphragm Idealization

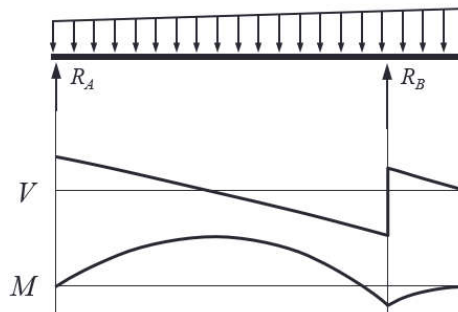


Diaphragm Components

Diaphragm Idealization



(a) Plan



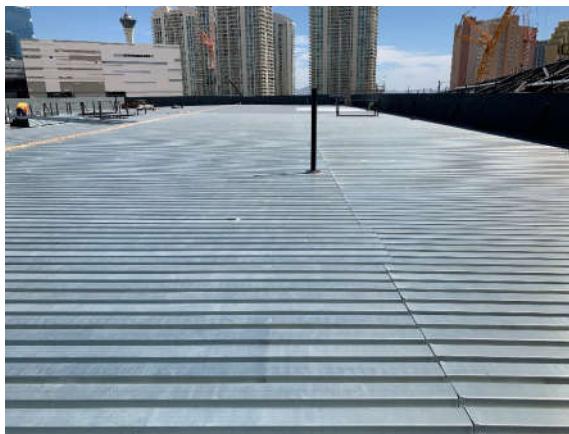
(b) Simple beam idealization



Diaphragm Components

Flexible vs. Rigid ASCE 7-16, Section 12.3)

- Flexible
 - Prescriptive
 - Calculated



Diaphragm Components

Flexible vs. Rigid ASCE 7-16, Section 12.3)

- Rigid
 - Prescriptive
 - Span-to-depth must be ≤ 3

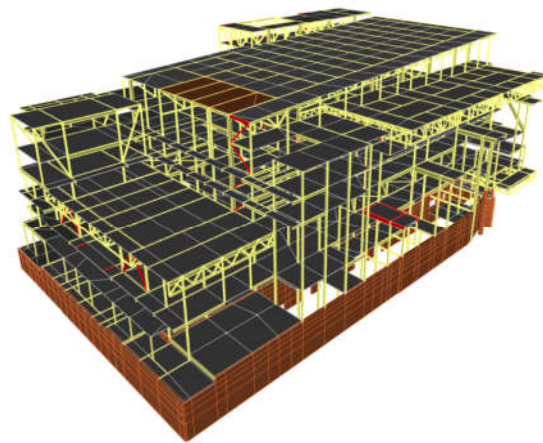


19

Diaphragm Components

Flexible vs. Rigid ASCE 7-16, Section 12.3)

- All others (semi-rigid)
 - Diaphragm flexibility must be considered in the analysis



20

Diaphragm Components

Slab on Steel Deck Diaphragm Approaches

AISC 341, Section D1.5a

- Details shall be provided to transfer load between the diaphragm and boundary members, collector elements, and elements of the horizontal framing system.



21

Diaphragm Components

Slab on Steel Deck Diaphragm Approaches

AISC 341, Section D1.5b

- Diaphragm is the topping slab above the flutes designed per ACI 318
- Diaphragm is the slab on deck assembly using in plane shear tests (such as ICC-ES or IAPMO-UES report values)



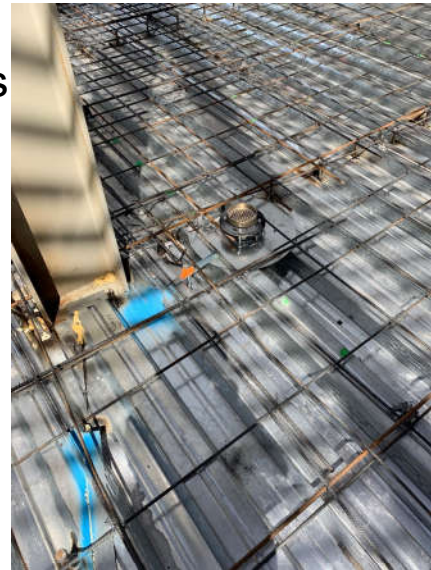
22

Diaphragm Components

Topping Slab Diaphragm Approaches

Topping slab designed per ACI 318

- Topping thickness
- Concrete compressive strength
- Reinforcement ratio



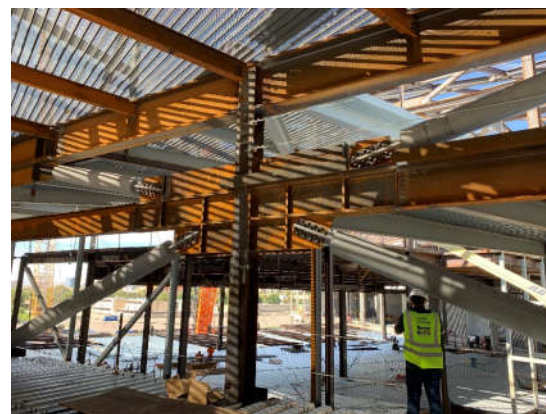
23

Diaphragm Components

Slab on Steel Deck Diaphragm Approaches

Slab on deck assembly

- Deck thickness (gage)
- Support (beam) spacing
- Stud count
- Deck attachments to support
- Deck sidelap attachments
- Minimum slab reinforcement



24

Diaphragm Components

Slab on Steel Deck
Diaphragm Approaches

Sidelap Fasteners

- Welds
- Screws
- Proprietary systems



Diaphragm Components

Slab on Steel Deck
Diaphragm Approaches

No. 12 Self-Drilling Screws to Supports with
DeltaGrip® Side Seam Attachment
Diaphragm Shear in pounds per linear foot (plf)



Design Tables

- Strength
- Stiffness

Gage	Support Fasteners	Seam Spacing (in)	Allowable Shear, q_n , Factored Shear, q_f and Flexibility Factor, F (10^4 in/lbs)																		
			4	5	6	7	8	9	10	11	12										
36/7/4	4	% S	1839	2339	1431	2335	1428	2316	1420	2308	1417	2303	1414	2298	1412	2292	1410	2287	1408	2283	
		F	6-0-8R	6-1-0-8R	6-2-0-8R	6-3-0-8R	6-4-0-8R	6-4-0-8R	6-4-0-8R	6-4-0-8R	6-4-0-8R	6-4-0-8R	6-4-0-8R	6-4-0-8R	6-4-0-8R	6-4-0-8R	6-4-0-8R	6-4-0-8R	6-4-0-8R	6-4-0-8R	6-4-0-8R
	6	% S	1839	2140	1831	2130	1828	2120	1828	2109	1828	2091	1828	2077	1828	2061	1828	2031	1828	2011	1828
		F	8-7-8R	7-0-8R	7-2-0-8R	7-4-0-8R	7-5-0-8R	7-5-0-8R	7-5-0-8R	7-5-0-8R	7-5-0-8R	7-5-0-8R	7-5-0-8R	7-5-0-8R	7-5-0-8R	7-5-0-8R	7-5-0-8R	7-5-0-8R	7-5-0-8R	7-5-0-8R	7-5-0-8R
	8	% S	1230	2000	1228	1996	1183	1922	1188	1931	1156	1878	1163	1890	1138	1820	1133	1801	1121	1782	1116
		F	7-4-1-3R	7-6-1-2R	8-1-3R	8-1-1-3R	8-1-1-3R	8-1-1-3R	8-1-1-3R	8-1-1-3R	8-1-1-3R	8-1-1-3R	8-1-1-3R	8-1-1-3R	8-1-1-3R	8-1-1-3R	8-1-1-3R	8-1-1-3R	8-1-1-3R	8-1-1-3R	8-1-1-3R
	12	% S	1078	1752	1094	1681	1062	1632	1060	1592	1061	1562	1061	1538	1061	1518	1061	1502	1061	1487	1061
		F	8-3-4-8R	8-3-2-8R	8-3-2-8R	8-3-2-8R	8-3-2-8R	8-3-2-8R	8-3-2-8R	8-3-2-8R	8-3-2-8R	8-3-2-8R	8-3-2-8R	8-3-2-8R	8-3-2-8R	8-3-2-8R	8-3-2-8R	8-3-2-8R	8-3-2-8R	8-3-2-8R	8-3-2-8R
	18	% S	972	1580	944	1533	832	1352	829	1348	828	1345	757	1231	763	1240	768	1248	777	1168	777
		F	8-9-2-3R	8-4-2-4R	10-6-2-8R	11-2-7R	11-2-2-9R	11-2-2-9R	11-2-2-9R	11-2-2-9R	11-2-2-9R	11-2-2-9R	11-2-2-9R	11-2-2-9R	11-2-2-9R	11-2-2-9R	11-2-2-9R	11-2-2-9R	11-2-2-9R	11-2-2-9R	11-2-2-9R
	24	% S	841	1367	836	1358	728	1182	743	1203	685	1081	683	1100	620	1016	644	1047	598	972	598
		F	9-7-3R	11-2-3-7R	12-8-4-5R	12-8-4-5R	12-8-4-5R	12-8-4-5R	12-8-4-5R	12-8-4-5R	12-8-4-5R	12-8-4-5R	12-8-4-5R	12-8-4-5R	12-8-4-5R	12-8-4-5R	12-8-4-5R	12-8-4-5R	12-8-4-5R	12-8-4-5R	12-8-4-5R
36	% S	541	1367	709	1153	610	991	642	1043	568	924	550	813	540	878	487	792	443	720	443	
	F	9-7-3R	11-2-3-7R	12-8-4-5R	12-8-4-5R	12-8-4-5R	12-8-4-5R	12-8-4-5R	12-8-4-5R	12-8-4-5R	12-8-4-5R	12-8-4-5R	12-8-4-5R	12-8-4-5R	12-8-4-5R	12-8-4-5R	12-8-4-5R	12-8-4-5R	12-8-4-5R	12-8-4-5R	12-8-4-5R
20	4	% S	876	1423	874	1421	873	1419	872	1418	872	1417	872	1416	872	1415	872	1415	872	1415	872
		F	8-2-3-8R	8-3-0-8R	8-4-0-8R	8-4-0-8R	8-4-0-8R	8-4-0-8R	8-4-0-8R	8-4-0-8R	8-4-0-8R	8-4-0-8R	8-4-0-8R	8-4-0-8R	8-4-0-8R	8-4-0-8R	8-4-0-8R	8-4-0-8R	8-4-0-8R	8-4-0-8R	8-4-0-8R
	6	% S	844	1372	840	1366	838	1361	836	1358	834	1355	832	1353	831	1351	830	1350	830	1348	830
		F	7-2-0-8R	7-4-0-8R	7-6-0-7R	7-6-0-7R	7-6-0-7R	7-6-0-7R	7-6-0-7R	7-6-0-7R	7-6-0-7R	7-6-0-7R	7-6-0-7R	7-6-0-7R	7-6-0-7R	7-6-0-7R	7-6-0-7R	7-6-0-7R	7-6-0-7R	7-6-0-7R	7-6-0-7R
	8	% S	811	1318	813	1321	799	1291	802	1304	792	1286	798	1293	789	1279	791	1285	784	1274	784
		F	8-1-1-3R	8-1-1-3R	8-1-1-3R	8-1-1-3R	8-1-1-3R	8-1-1-3R	8-1-1-3R	8-1-1-3R	8-1-1-3R	8-1-1-3R	8-1-1-3R	8-1-1-3R	8-1-1-3R	8-1-1-3R	8-1-1-3R	8-1-1-3R	8-1-1-3R	8-1-1-3R	8-1-1-3R
	12	% S	748	1215	724	1192	723	1175	710	1182	709	1162	704	1143	699	1137	696	1131	693	1128	693
		F	9-3-2R	9-9-1-9R	10-3-1-9R	10-3-1-9R	10-3-1-9R	10-3-1-9R	10-3-1-9R	10-3-1-9R	10-3-1-9R	10-3-1-9R	10-3-1-9R	10-3-1-9R	10-3-1-9R	10-3-1-9R	10-3-1-9R	10-3-1-9R	10-3-1-9R	10-3-1-9R	10-3-1-9R
	18	% S	690	1129	688	1116	631	1025	630	1021	627	1026	625	1022	620	1015	619	1011	617	1007	617
		F	10-3-3-8R	10-8-2-9R	12-3-2-9R	12-4-2-9R	12-4-2-9R	12-4-2-9R	12-4-2-9R	12-4-2-9R	12-4-2-9R	12-4-2-9R	12-4-2-9R	12-4-2-9R	12-4-2-9R	12-4-2-9R	12-4-2-9R	12-4-2-9R	12-4-2-9R	12-4-2-9R	12-4-2-9R
	24	% S	517	1002	625	1016	563	915	579	940	532	865	549	892	512	832	529	859	498	809	498
		F	11-6-3-8R	12-3-2R	13-7-3-9R	13-7-3-9R	13-7-3-9R	13-7-3-9R	13-7-3-9R	13-7-3-9R	13-7-3-9R	13-7-3-9R	13-7-3-9R	13-7-3-9R	13-7-3-9R	13-7-3-9R	13-7-3-9R	13-7-3-9R	13-7-3-9R	13-7-3-9R	13-7-3-9R
36	% S	617	1002	540	878	476	774	509	828	463	752	423	688	465	739	423	687	423	637	423	
	F	11-6-3-8R	13-6-4-8R	15-7-5-9R	15-7-5-9R	15-7-5-9R	15-7-5-9R	15-7-5-9R	15-7-5-9R	15-7-5-9R	15-7-5-9R	15-7-5-9R	15-7-5-9R	15-7-5-9R	15-7-5-9R	15-7-5-9R	15-7-5-9R	15-7-5-9R	15-7-5-9R	15-7-5-9R	15-7-5-9R



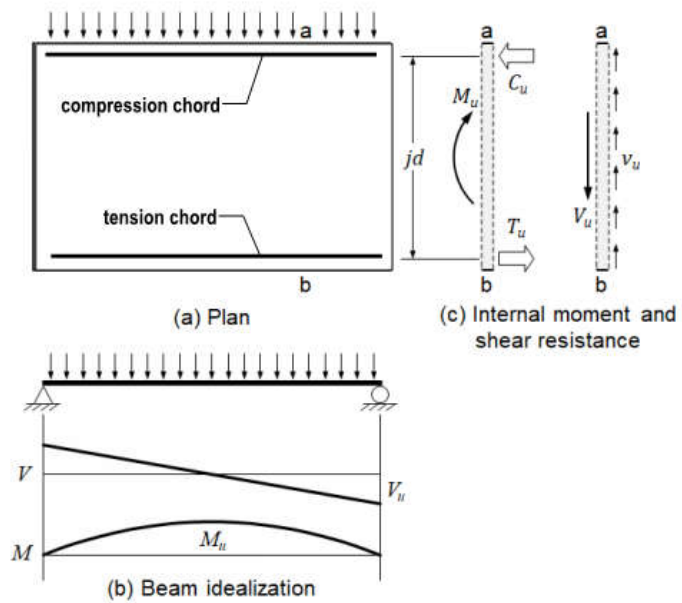
Diaphragm Components

Steel Deck Institute Diaphragm Design Manual



Diaphragm Components

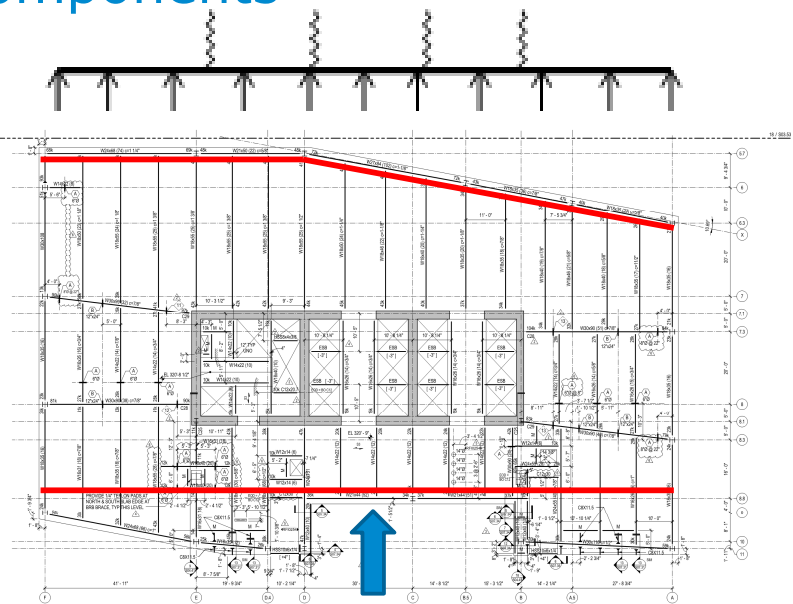
Chords



Diaphragm Components

Chords

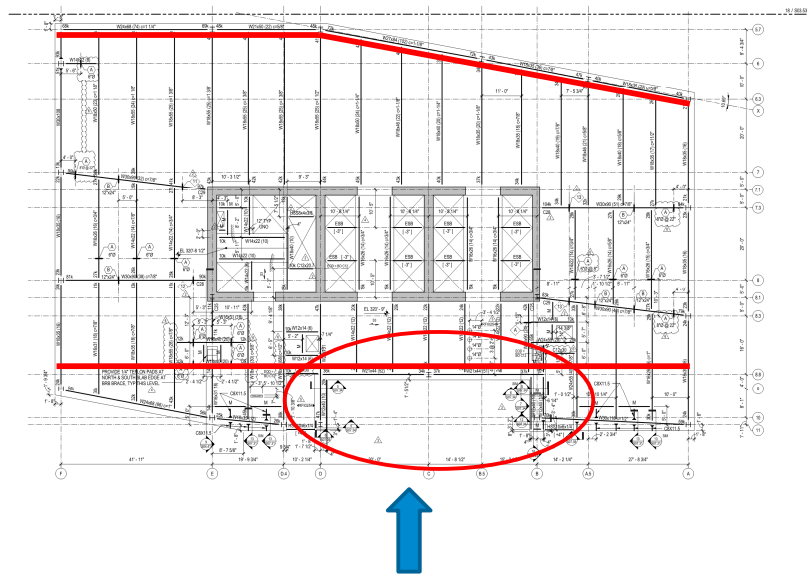
- Steel Framing
- Slab Reinforcement



Diaphragm Components

Chords

- Steel Framing
- Slab Reinforcement

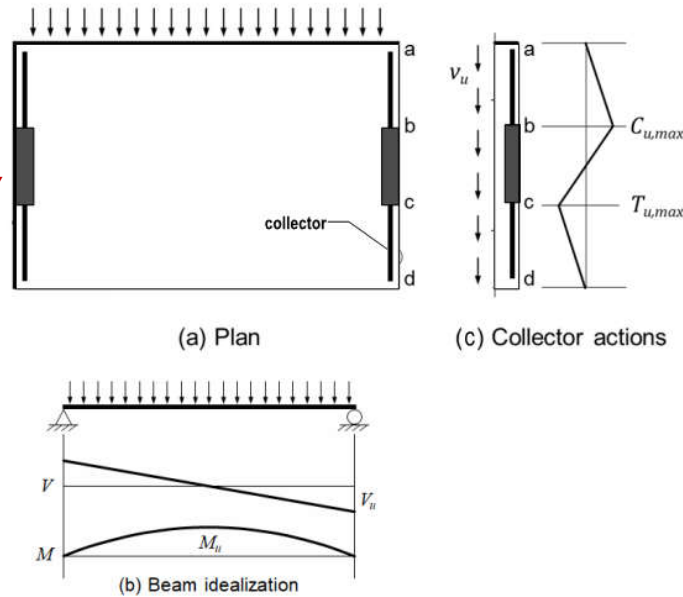


Diaphragm Components

Collectors (Drag Strut, Distributor)

- ASCE 7 Definition:

A diaphragm or shear wall boundary element parallel to the applied load that collects and transfers diaphragm shear forces to the vertical elements of the seismic force-resisting system or distributes forces within the diaphragm or shear wall.



Diaphragm Components

Collectors

- Steel Framing
- Slab Reinforcement



Diaphragm Components

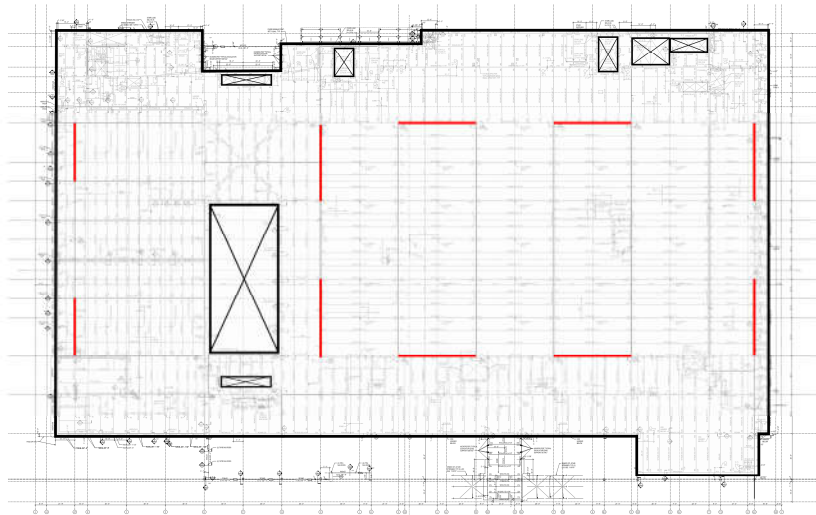
Putting It Together



35

Diaphragm Components

Putting It Together

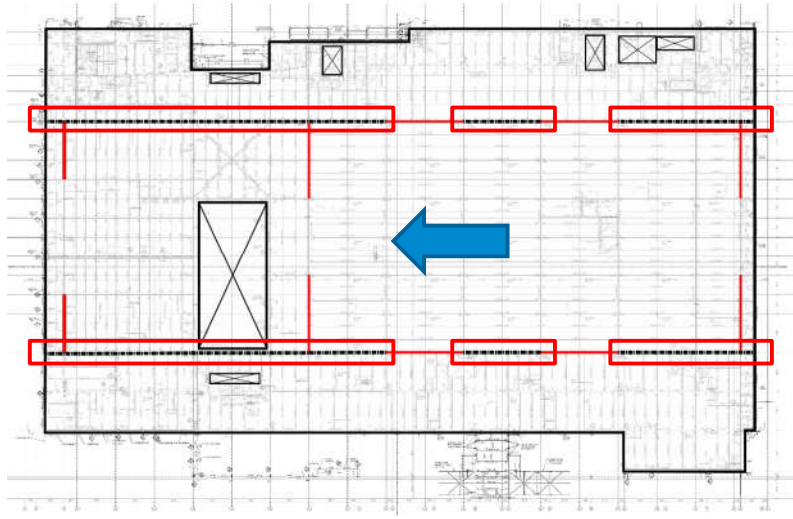


36



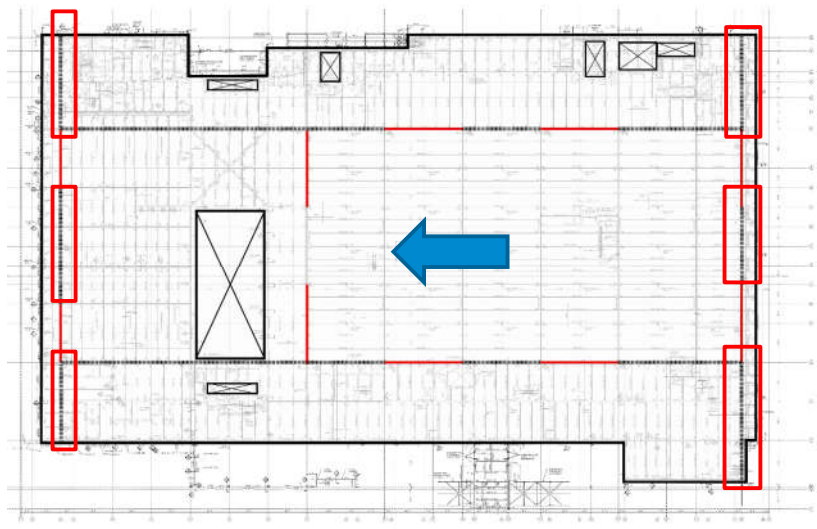
Diaphragm Components

Putting It Together - Collectors



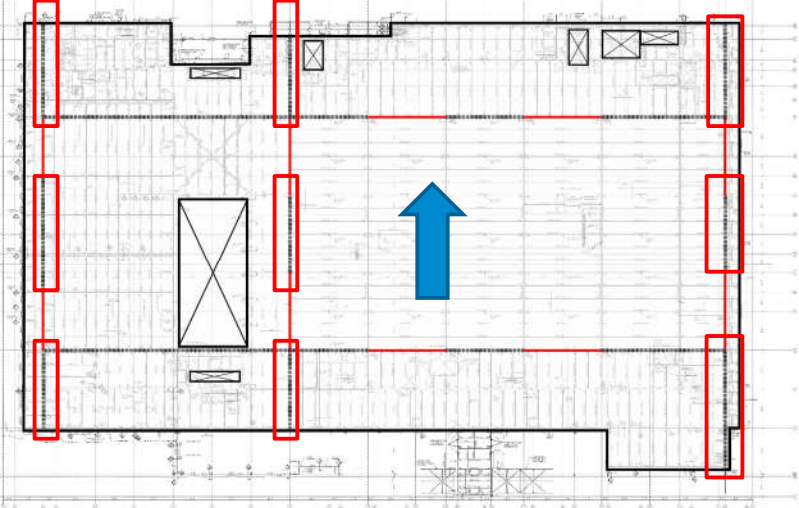
Diaphragm Components

Putting It Together - Chords



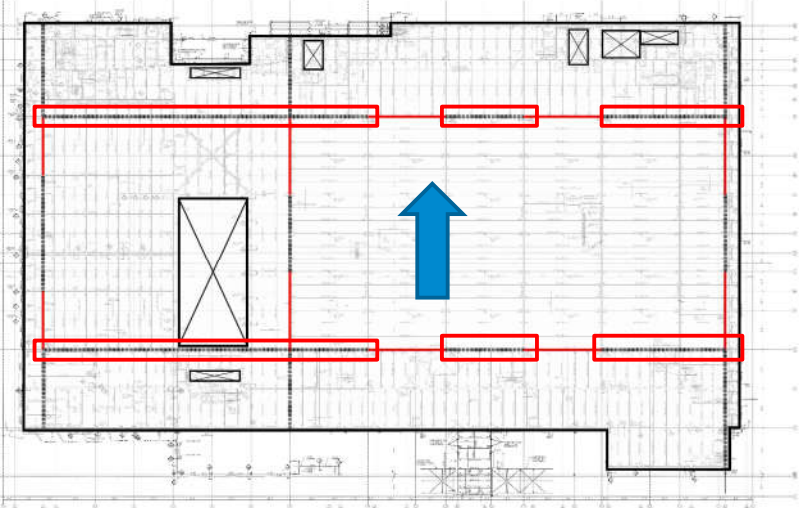
Diaphragm Components

Putting It Together - Collectors



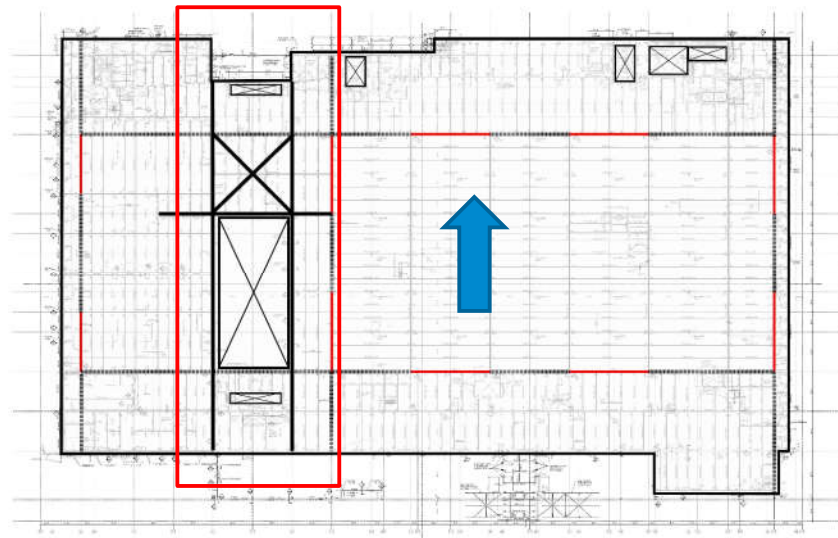
Diaphragm Components

Putting It Together - Chords



Diaphragm Components

Putting It Together – Large Openings



41

ASCE 7 Diaphragm Seismic Force Provisions



42



ASCE 7 Diaphragm Seismic Force Provisions

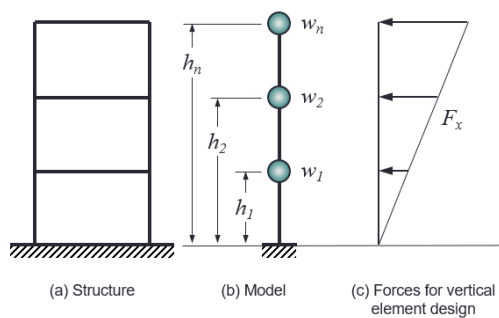
Wind Loading vs Seismic Loading

- Wind loads imposed by the cladding attachments at the exterior walls
 - IBC or ASCE 7 (other building codes)
 - Wind tunnel testing

- Seismic loads originate within the diaphragm and at masses being braced by the diaphragm, such as cladding
 - ASCE 7



ASCE 7 Diaphragm Seismic Force Provisions

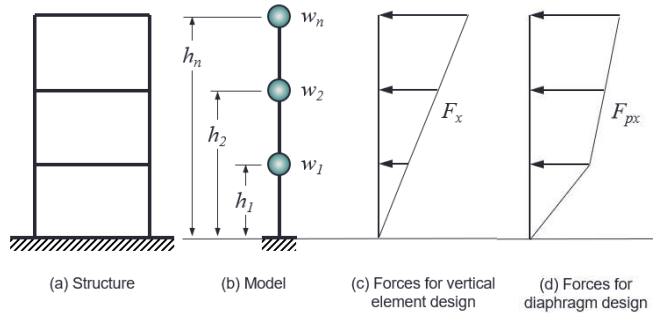


$$F_x = C_{vx} V \quad (\text{ASCE 7 Eq. 12.8-11})$$

$$C_{vx} = \frac{w_x h_x^k}{\sum_{i=1}^n w_i h_i^k} \quad (\text{ASCE 7 Eq. 12.8-12})$$



ASCE 7 Diaphragm Seismic Force Provisions



$$F_{px} = \frac{\sum_{i=x}^n F_i}{\sum_{i=x}^n w_i} w_{px} \quad (\text{ASCE 7 Eq. 12.10-1})$$

but not be less than

$$F_{px,\min} = 0.2 S_{DS} I_e w_{px} \quad (\text{ASCE 7 Eq. 12.10-2})$$

and need not exceed

$$F_{px,\max} = 0.4 S_{DS} I_e w_{px} \quad (\text{ASCE 7 Eq. 12.10-3})$$

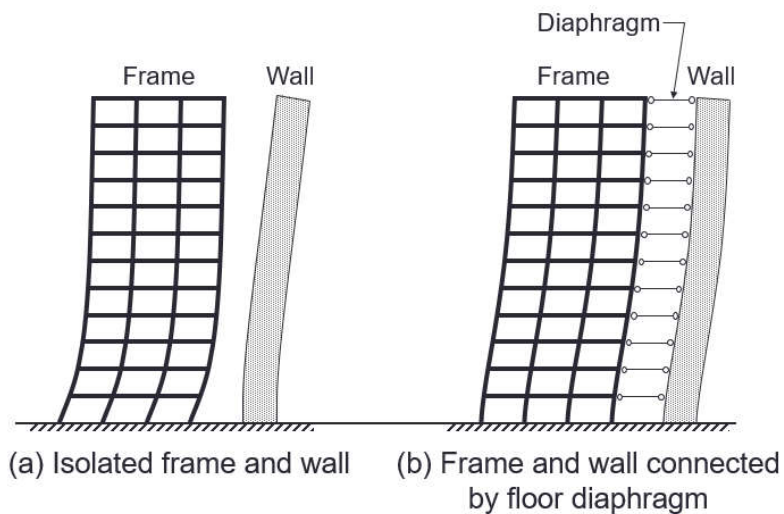
$$F_x = C_{vx} V \quad (\text{ASCE 7 Eq. 12.8-11})$$

$$C_{vx} = \frac{w_x h_x^k}{\sum_{i=1}^n w_i h_i^k} \quad (\text{ASCE 7 Eq. 12.8-12})$$



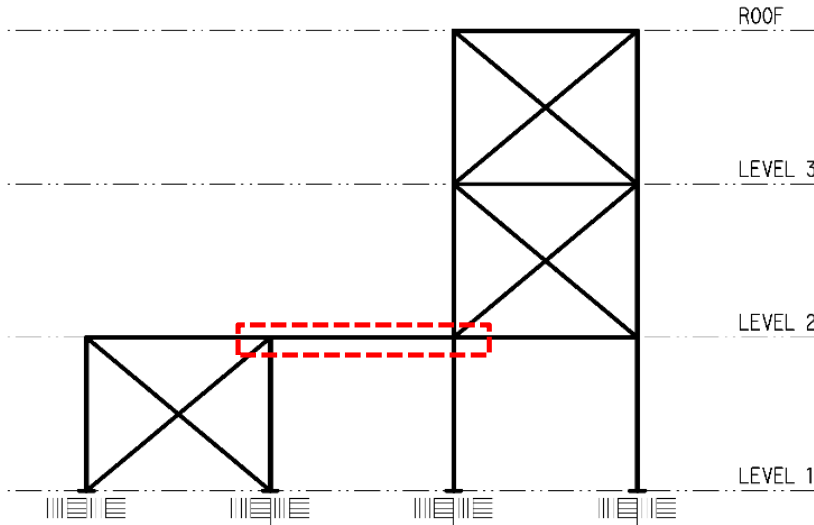
ASCE 7 Diaphragm Seismic Force Provisions

Transfer Forces



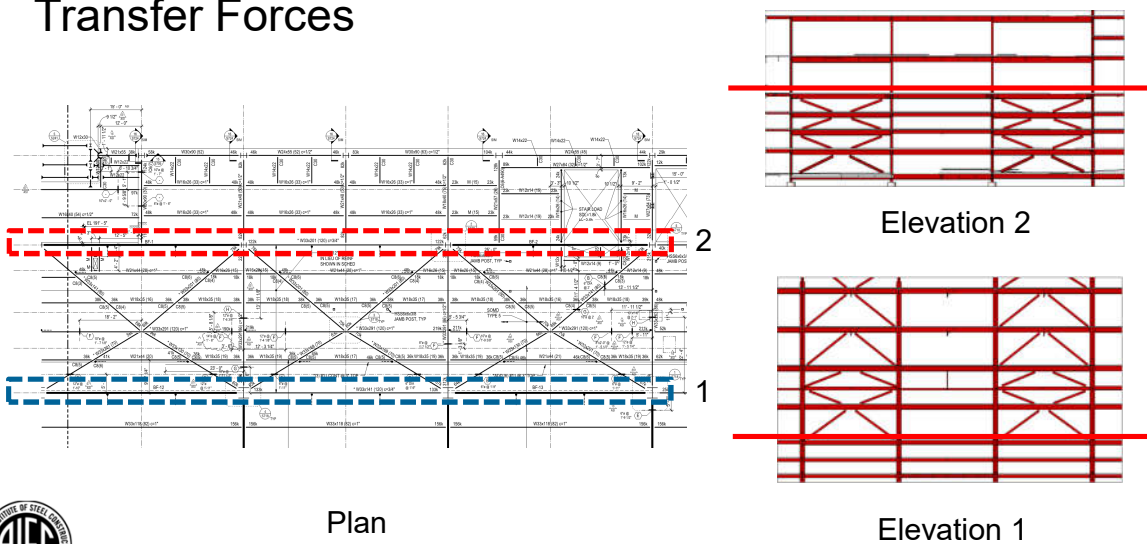
ASCE 7 Diaphragm Seismic Force Provisions

Transfer Forces



ASCE 7 Diaphragm Seismic Force Provisions

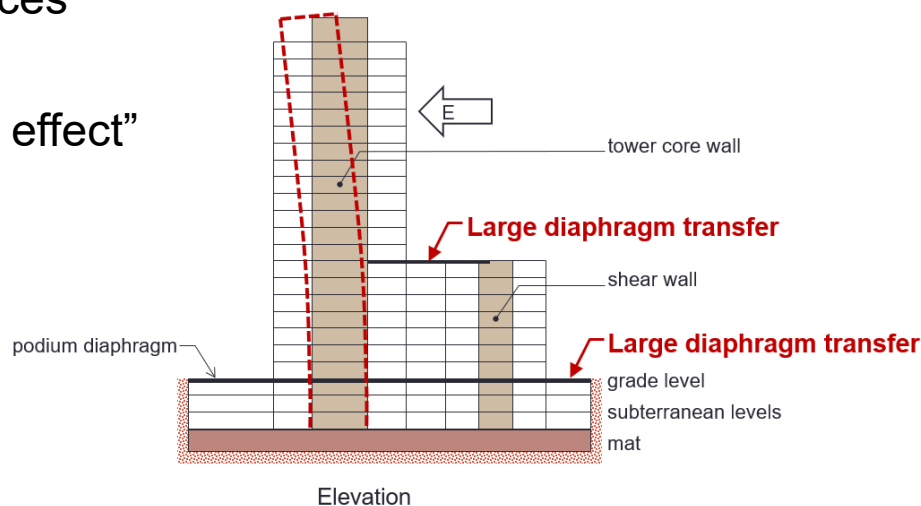
Transfer Forces



ASCE 7 Diaphragm Seismic Force Provisions

Transfer Forces

- “Backstay effect”



49

ASCE 7 Diaphragm Seismic Force Provisions

Transfer Forces for both diaphragms and collectors are...

- Additive to inertial forces
- Subject to the redundancy factor ρ , **except**
- Subject to the **overstrength factor Ω_0** where Out-of-Plane Offset irregularities exist (Type 4 Horizontal Structural Irregularities per Table 12.3-1)



50



ASCE 7 Collector Force Provisions

Section 12.10.2.1

For structures assigned to SDC C through F,
collector design forces are the maximum of (a), (b), and (c):

(a) Forces resulting from application of F_x using the load combinations with **overstrength factor Ω_0** of ASCE 7 Section 12.4.3.1;

(b) Forces resulting from application of F_{px} using the load combinations with **overstrength factor Ω_0** of ASCE 7 Section 12.4.3.1;

(c) Forces resulting from application of $F_{px,min}$ in the basic load combinations of ASCE 7 Section 12.4.2.

Transfer forces as previously described are additive



51

ASCE 7 Diaphragm Seismic Force Provisions

Irregularities – SDC D-F

- Horizontal Irregularities (ASCE 7, Table 12.3-1)
 - Type 1a, Type 1b, Type 2, Type 3, Type 4
 - Torsional, Extreme Torsional, Reentrant Corner, Diaphragm Discontinuity, Out-of-Plane Offset
- Vertical Irregularities (ASCE 7, Table 12.3-2)
 - Type 4
 - In-Plane Discontinuity in Vertical LFR Element
- **Inertial forces** calculated per ASCE 7, 12.10.1 design forces shall be increased by 25% for connections of diaphragms to vertical elements and collectors and their connections to vertical elements
- Transfer forces subject to overstrength factor



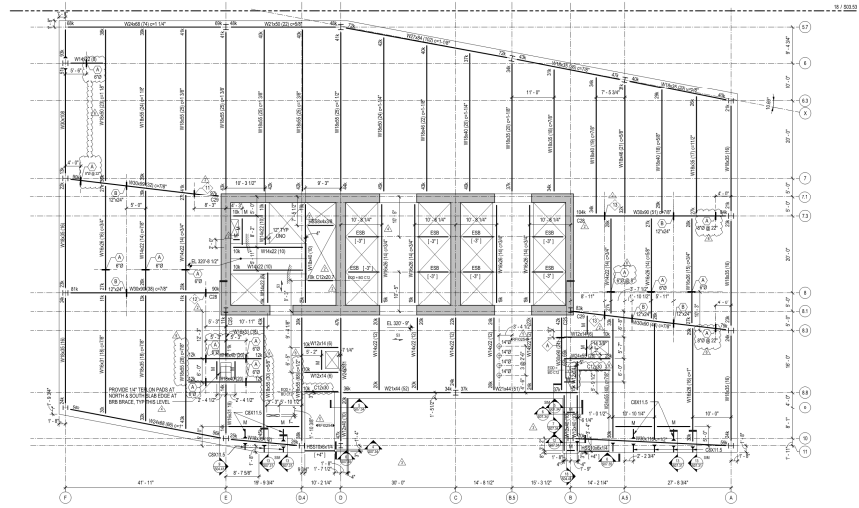
52



Diaphragm to Shear Wall Connections

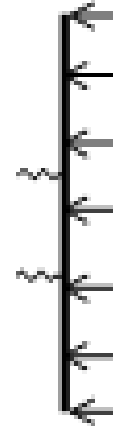
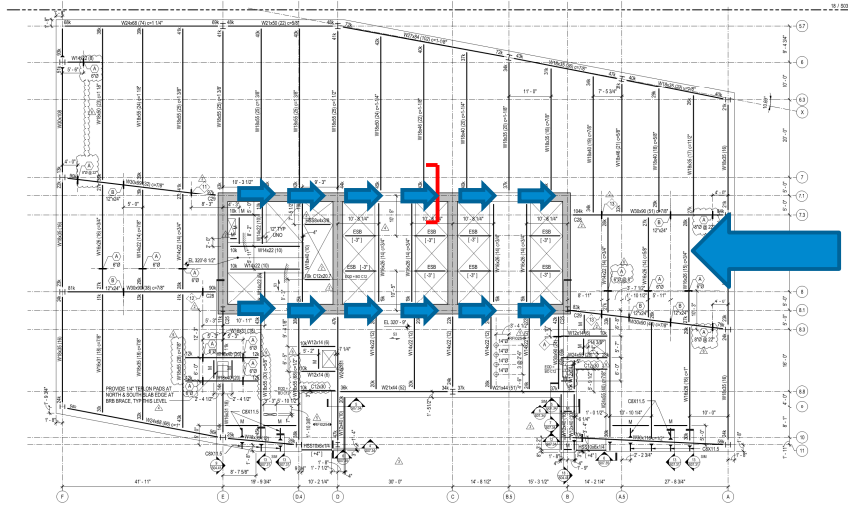


Diaphragm to Shear Walls Diaphragm to Concrete



Diaphragm to Shear Walls

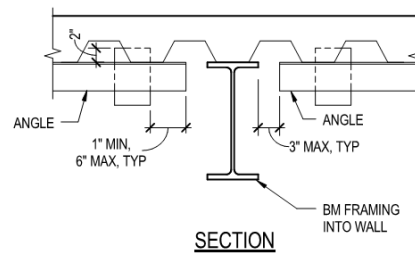
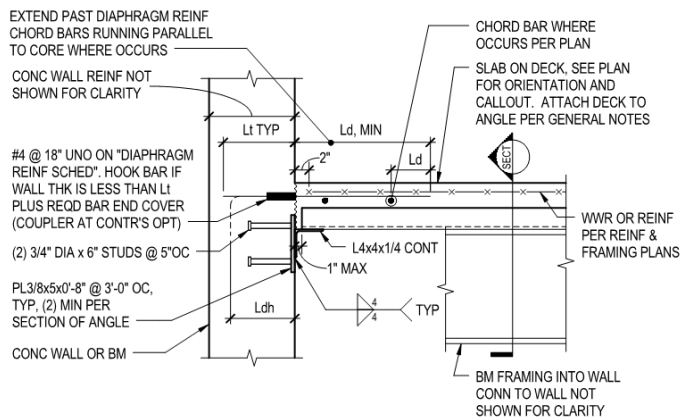
Diaphragm to Concrete



55

Diaphragm to Shear Walls

Diaphragm Connection to Concrete Wall



CAST-IN-PLACE OPTION

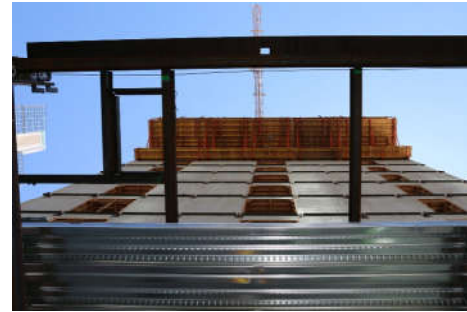
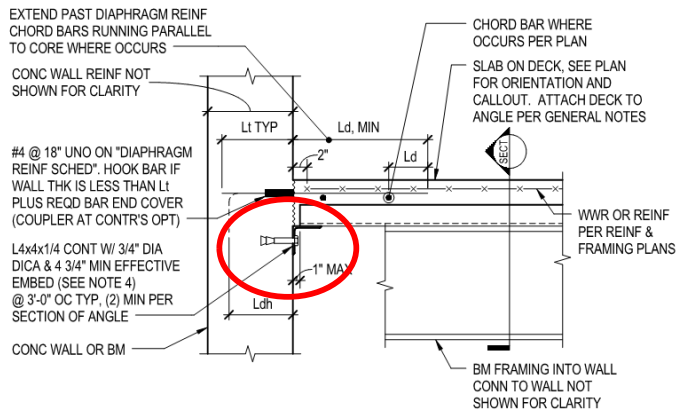


56



Diaphragm to Shear Walls

Diaphragm Connection to Concrete Wall



POST-INSTALLED OPTION



Diaphragm to Shear Walls

Connection Design for Diaphragm Shear

- Shear Friction Provisions per ACI 318

$$\phi V_n = \phi \mu A_{vf} f_y \quad (\text{ACI 318 22.9.4.2})$$

- Subject to upper limits per ACI 318 Table 22.9.4.4
- Typically $V_n \leq 0.2f'_c A_c \leq 800A_c$ unless concrete is intentionally roughened



Diaphragm to Shear Walls

Connection Design for Diaphragm Shear

- What is coefficient of friction, μ ?
- ACI 318 Table 22.9.4.2
 - 0.6λ concrete placed against hardened concrete
 - 1.0λ concrete placed against intentionally roughened surface
 - λ lightweight concrete factor (0.75 to 0.85)



59

Diaphragm to Shear Walls

Connection Design for Diaphragm Shear

- What is ϕ ?
- ACI 318 21.2.1
 - $\phi = 0.75$
- ACI 318 21.2.4
 - For seismic loads, $\phi = 0.6$ when the vertical elements are special moment frames or special structural walls



60



Diaphragm to Shear Walls

Connection Design for Diaphragm Shear

- Representative Project
- Special Concrete Walls Not Intentionally Roughened
 - Where $\phi = 0.6$
 - $\mu = 0.6\lambda$
- 4-1/2" NWT topping
- 5-1/4" LTWT topping
 - $f'_c = 4,000 \text{ psi}$



61

Diaphragm to Shear Walls

Connection Design for Diaphragm Shear

4-1/2" NWT

REINF	ρ	ϕV_n (K/FT)	ϕv_n	ρ	ϕV_n (K/FT)	ϕv_n
#4@18"	.0025	2.8	$0.8\sqrt{f'_c}$			
#4@12"	.0037	4.3	$1.3\sqrt{f'_c}$			
#5@12"	.0057	6.5	$1.9\sqrt{f'_c}$			
#5@6"	.0115	13.0	$3.8\sqrt{f'_c}$			
#5@4"	.0172	19.4	$5.7\sqrt{f'_c}$			



62



Diaphragm to Shear Walls

Connection Design for Diaphragm Shear

4-1/2" NWT

REINF	ρ	ϕV_n (K/FT)	ϕv_n	ρ	ϕV_n (K/FT)	ϕv_n
#4@18"	.0025	2.8	$0.8\sqrt{f'_c}$			
#4@12"	.0037	4.3	$1.3\sqrt{f'_c}$			
#5@12"	.0057	6.5	$1.9\sqrt{f'_c}$			
#5@6"	.0115	13.0	$3.8\sqrt{f'_c}$			
#5@4"	.0172	19.4	$5.7\sqrt{f'_c}$			

$$\phi V_{n,max} = \phi 8 \sqrt{f'_c} A_c$$



63

Diaphragm to Shear Walls

Connection Design for Diaphragm Shear

4-1/2" NWT

5-1/4" LTWT

REINF	ρ	ϕV_n (K/FT)	ϕv_n	ρ	ϕV_n (K/FT)	ϕv_n
#4@18"	.0025	2.8	$0.8\sqrt{f'_c}$.0025	2.5	$0.6\sqrt{f'_c}$
#4@12"	.0037	4.3	$1.3\sqrt{f'_c}$.0037	3.8	$1.0\sqrt{f'_c}$
#5@12"	.0057	6.5	$1.9\sqrt{f'_c}$.0057	5.7	$1.4\sqrt{f'_c}$
#5@6"	.0115	13.0	$3.8\sqrt{f'_c}$.0115	11.3	$2.9\sqrt{f'_c}$
#5@4"	.0172	19.4	$5.7\sqrt{f'_c}$.0172	17.0	$4.3\sqrt{f'_c}$

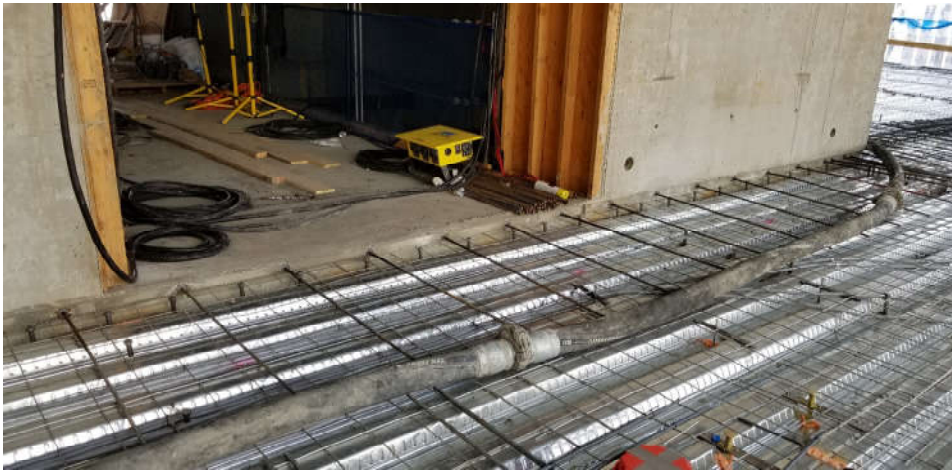


64



Diaphragm to Shear Walls

Connection Design for Diaphragm Shear

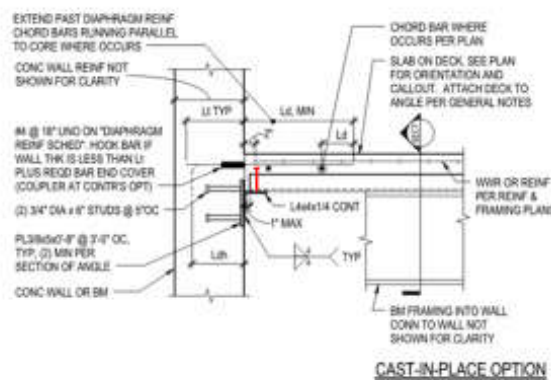


65

Diaphragm to Shear Walls

Diaphragm Connection to Concrete Wall – Alternate Load Path

- Headed studs to steel angle
- Steel angle to embed
- Embed to concrete



66



Diaphragm to Shear Walls

Diaphragm Connection to Concrete Wall – No Concrete

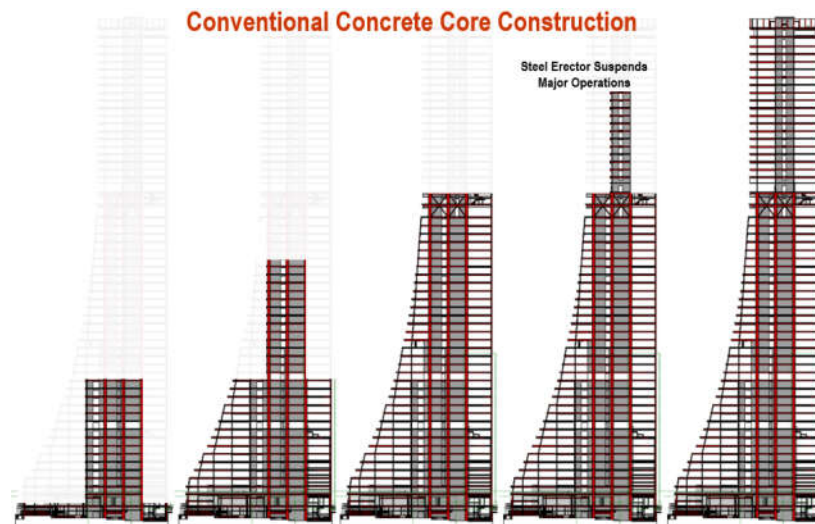
- Deck to steel angle weld
- Steel angle to embed
- Embed to concrete



67

Diaphragm to CPSW (SpeedCore)

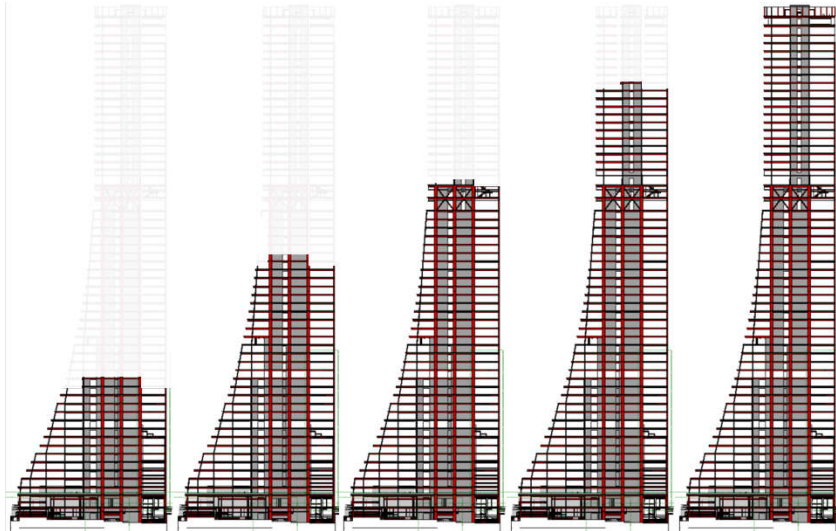
Diaphragm Connection to Composite Plate Shear Wall (SpeedCore)



68

Diaphragm to CPSW (SpeedCore)

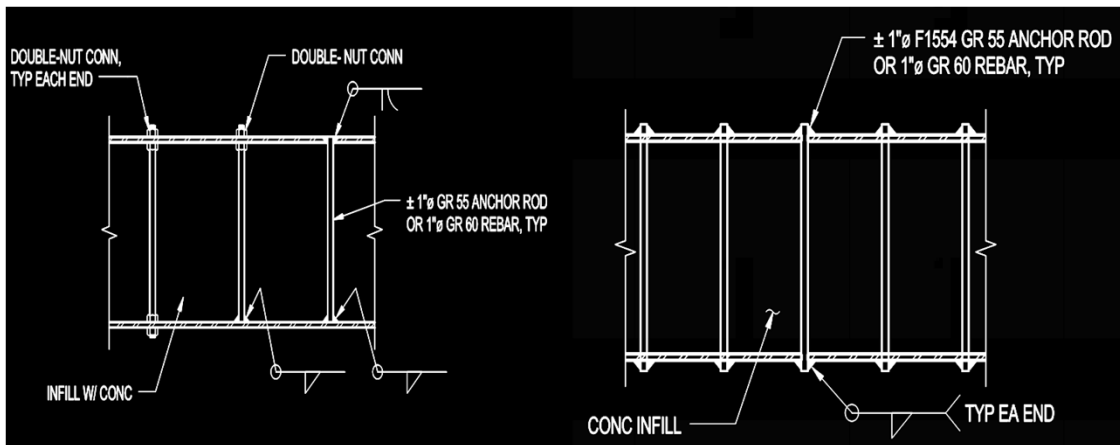
Diaphragm Connection to Composite Plate Shear Wall (SpeedCore)



69

Diaphragm to CPSW (SpeedCore)

Diaphragm Connection to Composite Plate Shear Wall (SpeedCore)

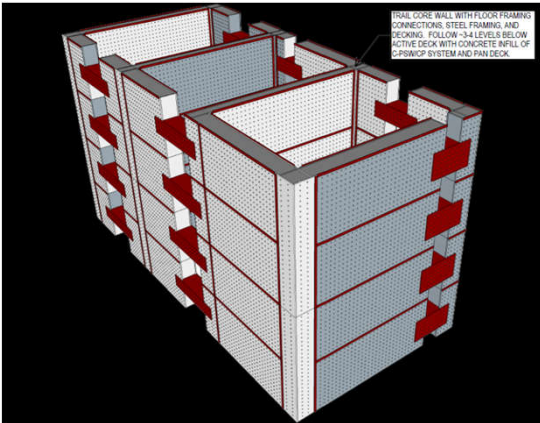
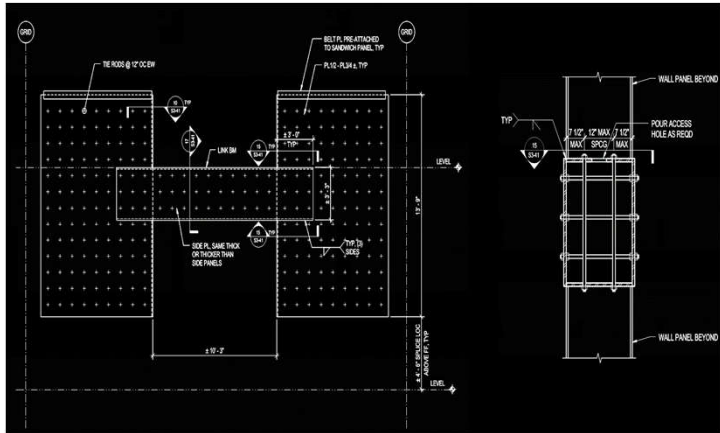


70



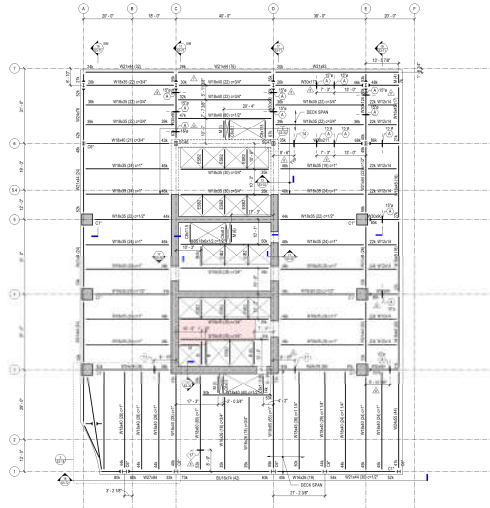
Diaphragm to CPSW (SpeedCore)

Diaphragm Connection to Composite Plate Shear Wall (SpeedCore)



Diaphragm to CPSW (SpeedCore)

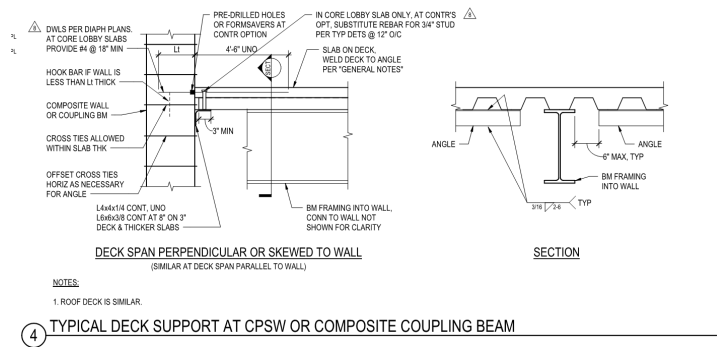
Diaphragm Connection to Composite Plate Shear Wall (SpeedCore)



Diaphragm to CPSW (SpeedCore)

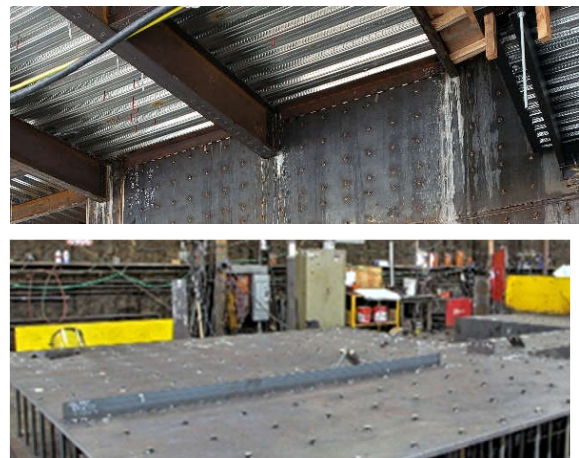
Diaphragm Connection to Composite Plate Shear Wall (SpeedCore)

- Ledger angle shop welded to wall
- Pre-drilled holes for reinforcement



Diaphragm to CPSW (SpeedCore)

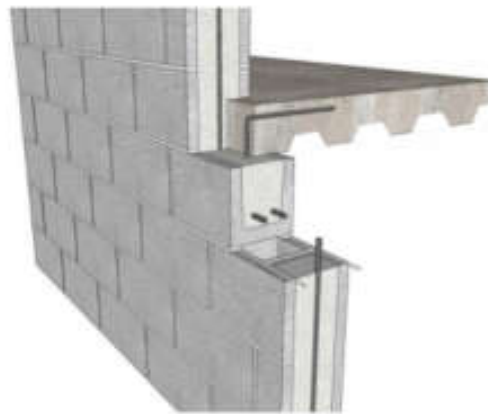
Diaphragm Connection to Composite Plate Shear Wall (SpeedCore)



Diaphragm to Shear Walls

Connection Detail to Masonry Wall

- International Masonry Institute
 - Masonry Detailing Series



75

Diaphragm to Boundary Element Connections



76

Diaphragm to Boundary Elements

Diaphragm to Steel Boundary Elements

- AISC 360 I7
 - *Composite slab diaphragms and collector beams shall be designed and detailed to transfer loads between the diaphragm, the diaphragm's boundary members and collector elements of the lateral force-resisting system*



77

Diaphragm to Boundary Elements

Diaphragm to Steel Boundary Elements

- AISC 341 D1.5a
 - *Details shall be provided to transfer loads between the diaphragm and boundary members, collector elements, and elements of the horizontal framing system*

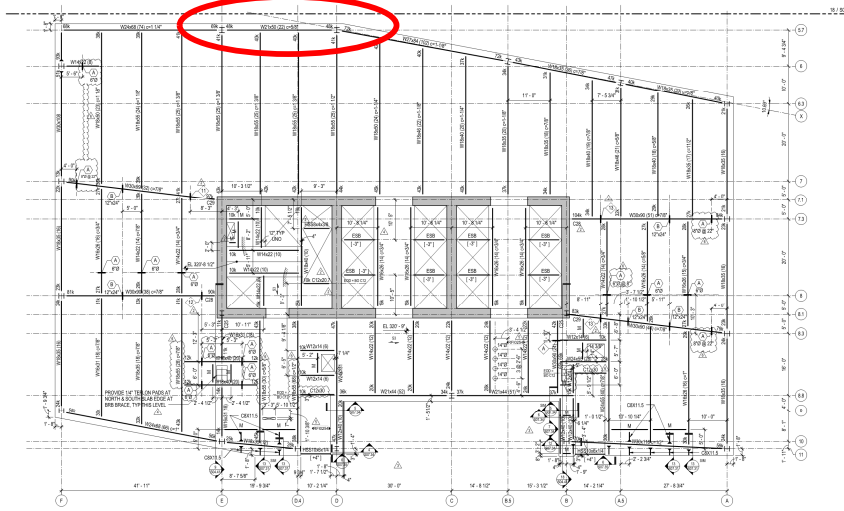


78



Diaphragm to Boundary Elements

Diaphragm to Steel Boundary Elements



79

Diaphragm to Boundary Elements

Boundary Element Design

AISC 360, Section I7 Commentary

- Design for the combined effects of axial load due to diaphragm forces and flexure due to gravity and/or lateral loads
- Axial capacity typically taken as the non-composite strength
- Flexural capacity can be either the composite or non-composite flexural strength (where appropriate)



80



Diaphragm to Boundary Elements

Boundary Element Design

AISC Seismic Design Manual, 3rd Edition, Chapter 8

- Major axis buckling – full length of the member (web vertical)
- Minor axis and torsional buckling
 - Beams with bare steel deck with ribs parallel
 - Beams with bare steel deck with ribs perpendicular
 - Composite deck or slabs
- *Constrained axis torsional buckling may control

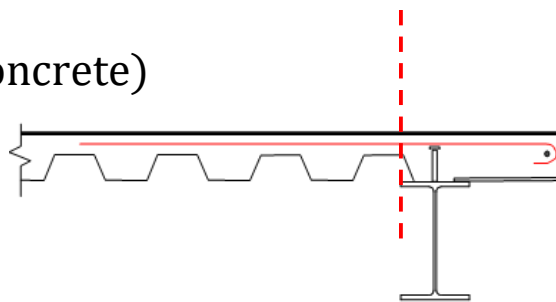


81

Diaphragm to Boundary Elements

Diaphragm to Steel Boundary Elements

- Provide shear friction reinforcement at the boundary element
- $\mu = 1.4\lambda$ (monolithic concrete)

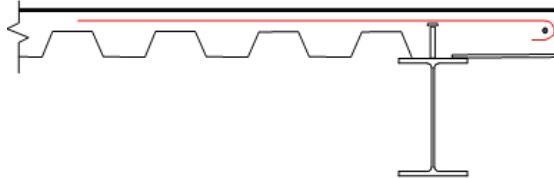


82

Diaphragm to Boundary Elements

Diaphragm to Steel Boundary Elements

- 3" NLWT on 3" Deck (55 psf)
- SDL = 15 psf
- LL = 50 psf(r) +15 psf partition
 - 50 psf reduces to 33 psf
- $S_{ds} = 0.90$
- $b_{trib} = 22'-6"$

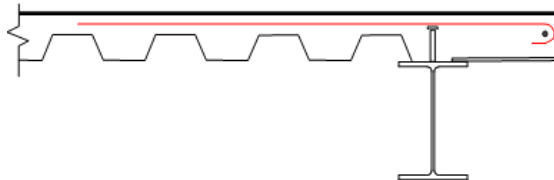


83

Diaphragm to Boundary Elements

Diaphragm to Steel Boundary Elements

- Headed Studs
- Design Load Combinations
 - $1.2D+1.6L$
 - $U = 161$ psf
 - $(1.2+0.2S_{ds})D + f_1L$
 - $f_1=0.5$
 - $U = 121$ psf
 - ~25% reduction

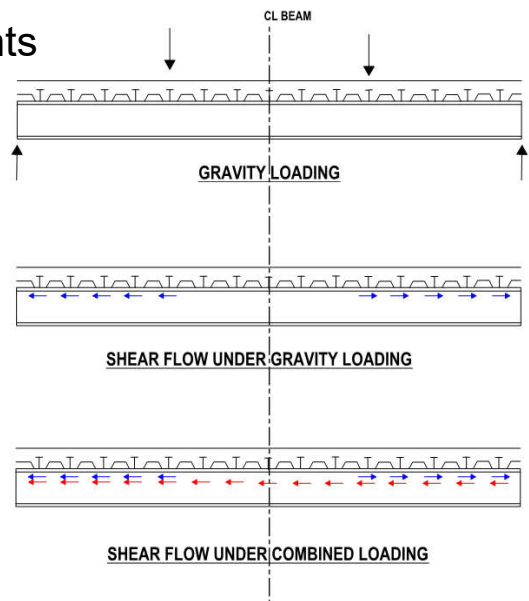


84

Diaphragm to Boundary Elements

Diaphragm to Steel Boundary Elements

- Headed Studs
- Design Load Combinations
 - $1.2D+1.6L$
 - $U = 161 \text{ psf}$
 - $(1.2+0.2S_{ds})D + f_1L$
 - $f_1=0.5$
 - $U = 121 \text{ psf}$
 - ~25% reduction



85



Boundary Element to Boundary Element Connections



86



Boundary Element to Boundary Element

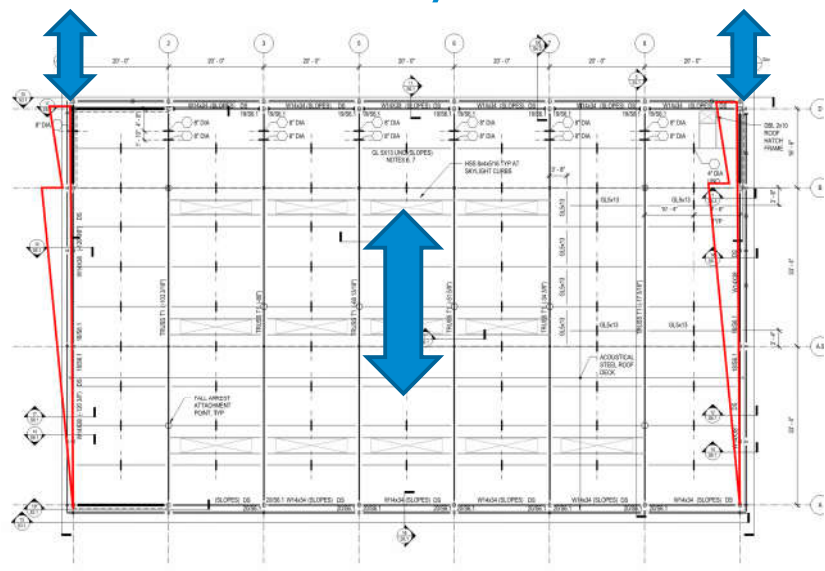
Steel to Steel



Boundary Element to Boundary Element

Steel to Steel

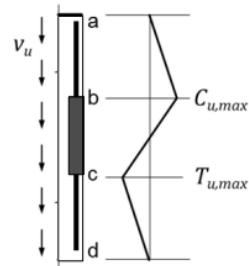
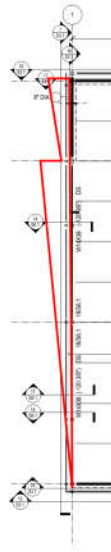
- Uniform shear stress
- Linearly varying axial force in collector line



Boundary Element to Boundary Element

Steel to Steel

- Uniform shear stress
- Linearly varying axial force in collector line

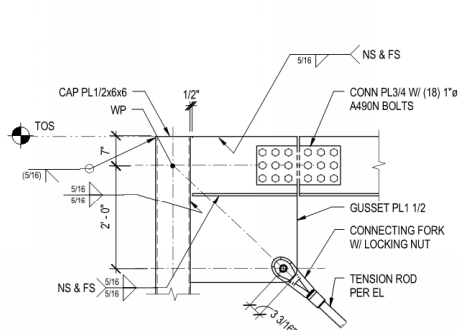


(c) Collector actions

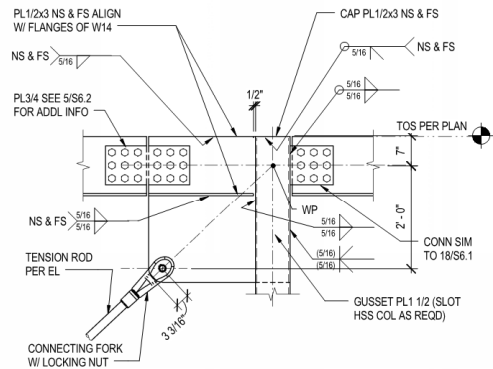


Boundary Element to Boundary Element

Steel to Steel – Extended Shear Plate



2
3/4" = 1'-0"



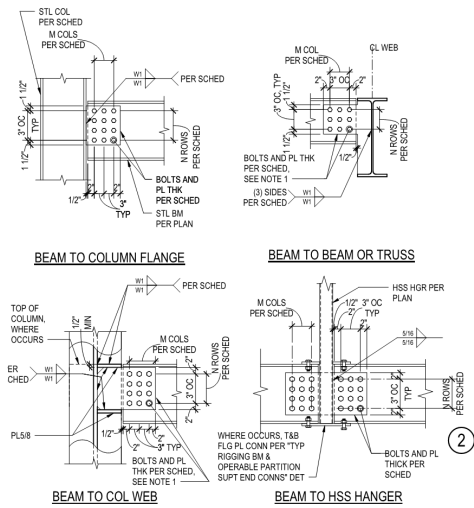
3
3/4" = 1'-0"



Boundary Element to Boundary Element

Steel to Steel – Extended Shear Plate

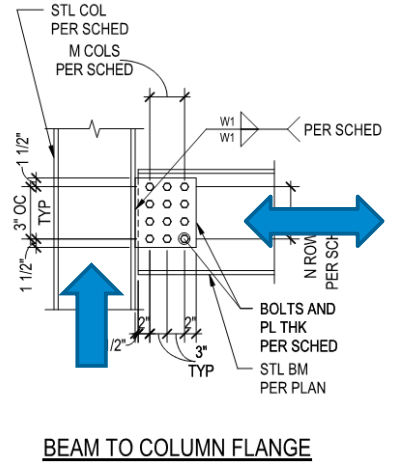
CONNECTION TYPE	BOLTS	M COLUMNS	N ROWS	PL THICKNESS (IN)	W1 (IN)	REMARKS
A	7/8" ø A325X	2	3	3/8	5/16	
B	7/8" ø A325X	2	3	1/2	5/16	
C	7/8" ø A325X	2	3	5/8	7/16	
D	7/8" ø A325X	2	4	3/8	1/4	
E	7/8" ø A325X	2	4	1/2	5/16	
F	7/8" ø A325X	2	6	1/2	5/16	
G	7/8" ø A325X	2	9	5/8	7/16	
H	7/8" ø A325X	2	10	5/8	7/16	
J	7/8" ø A325X	3	3	5/8	7/16	
K	7/8" ø A325X	3	4	3/4	1/2	
L	7/8" ø A325X	3	5	3/4	1/2	
M	7/8" ø A325X	3	11	3/4	9/16	
N	7/8" ø A325X	4	3	1	11/16	
P	1" ø A490X	2	5	1/2	3/8	
Q	1" ø A490X	2	7	3/4	1/2	
R	1" ø A490X	2	9	5/8	7/16	
S	1" ø A490X	2	10	3/4	1/2	
T	1" ø A490X	3	5	3/4	1/2	
U	1" ø A490X	4	5	3/4	1/2	



Boundary Element to Boundary Element

Steel to Steel – Extended Shear Plate

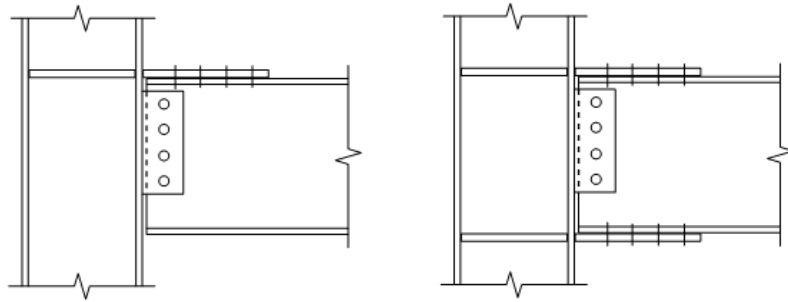
- AISC Manual of Steel Construction, Part 10
- Design Example Companion, Example Vol 1
 - Example II.A-19B
- Vertical shear
- Axial force
- Bolt Group
- Weld
- Eccentricities
- Net Section



Boundary Element to Boundary Element

Steel to Steel – Flange Plates

- Vertical shear
- Axial force
- Bolt Group
- Weld
- Eccentricities
- Net Section
- Shear Lag
- Concentrated Forces (Stiffeners)

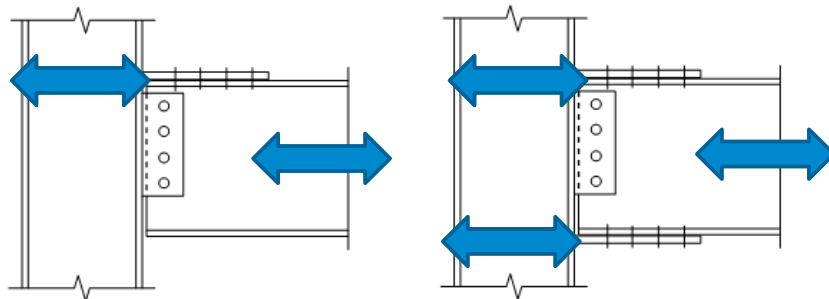


93

Boundary Element to Boundary Element

Steel to Steel – Flange Plates

- Vertical shear
- Axial force
- Bolt Group
- Weld
- Eccentricities
- Net Section
- Shear Lag
- Concentrated Forces (Stiffeners)



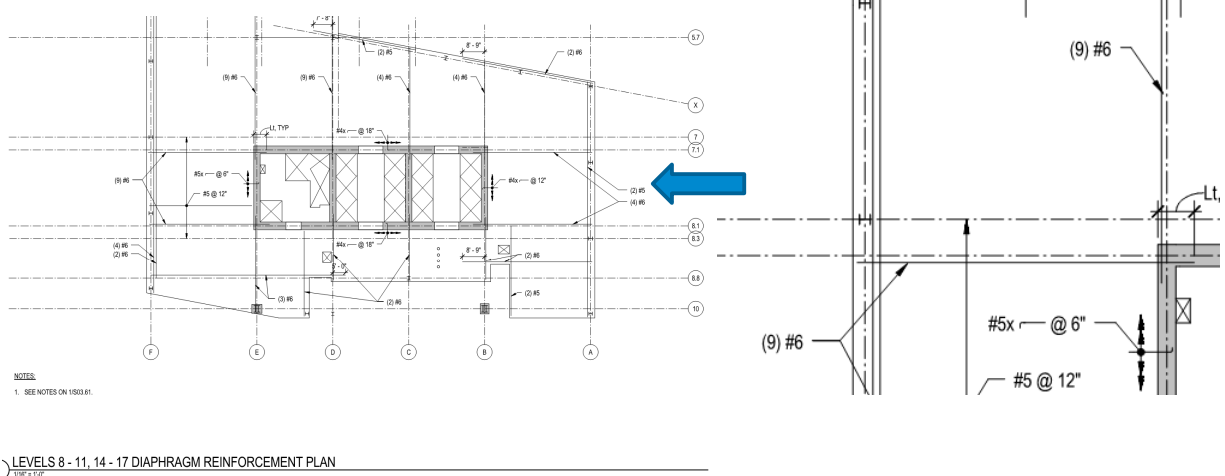
94



Collector to Shear Wall Connections

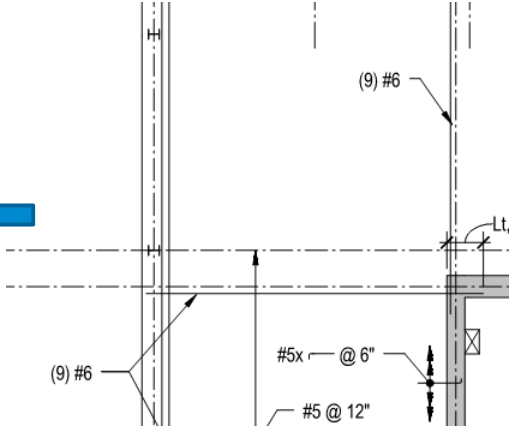
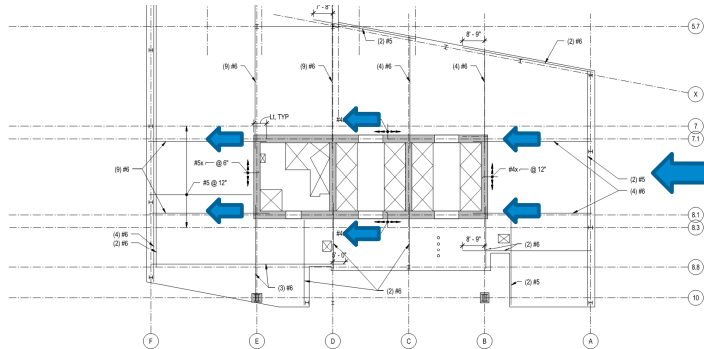


Collector to Shear Walls Collector in Concrete



Collector to Shear Walls

Collector in Concrete

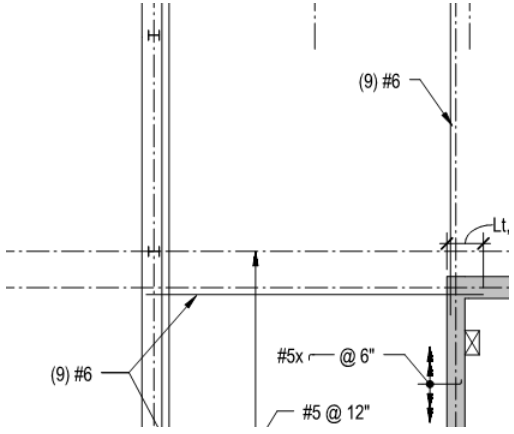
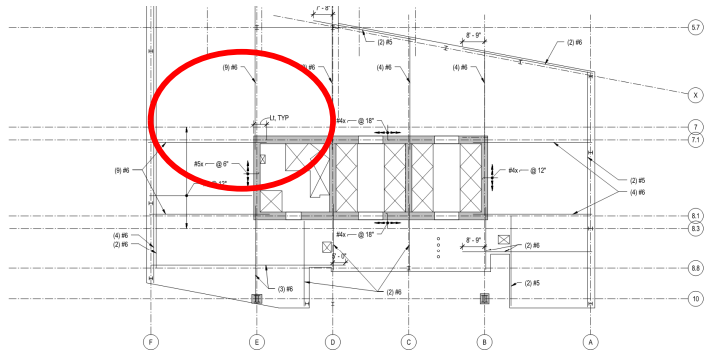


NOTES:
1. SEE NOTES ON 1503.01.

LEVELS 8 - 11, 14 - 17 DIAPHRAGM REINFORCEMENT PLAN
1/8" = 1'-0"

Collector to Shear Walls

Collector in Concrete



NOTES:
1. SEE NOTES ON 1503.01.

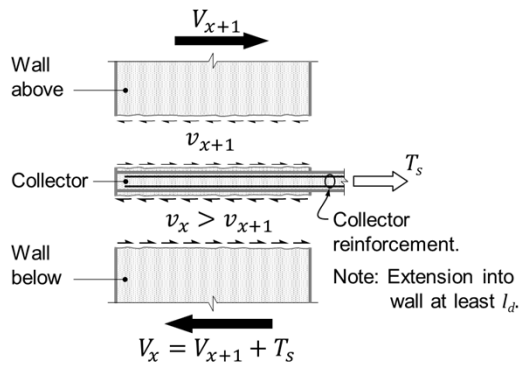
LEVELS 8 - 11, 14 - 17 DIAPHRAGM REINFORCEMENT PLAN
1/8" = 1'-0"



Collector to Shear Walls

Collector in Concrete

- Develop collector into the wall



99

Collector to Shear Walls

Collector in Concrete



100

Collector to Shear Walls

Concrete to Concrete

- Congestion escalates quickly
 - Typically 1-bar fits within the flute and 1-bar in the opposite direction over the flutes
- ACI 318 requirements for cover and spacing
- Coordinate with all trades

- Use the steel framing as collectors!



101

Collector to Shear Walls

Steel to Concrete

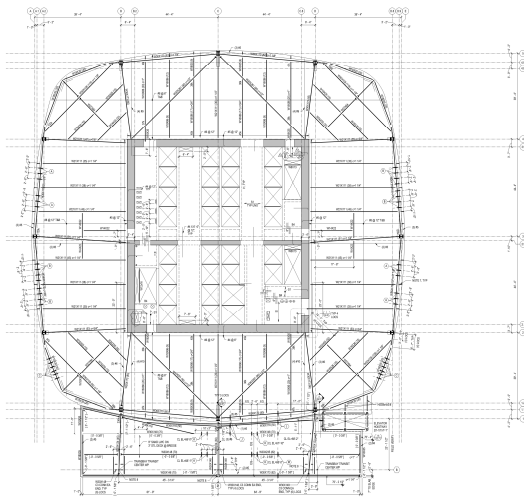


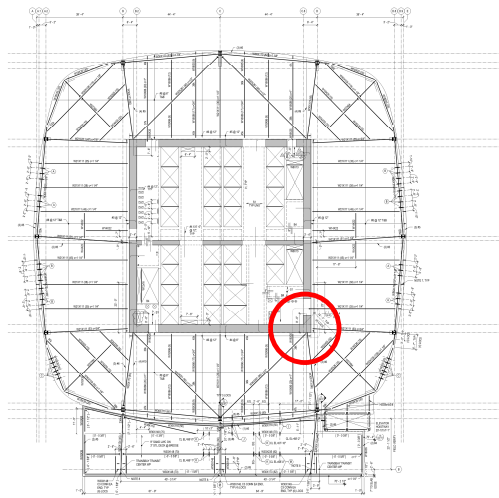
Photo by Jason O'Rear



102

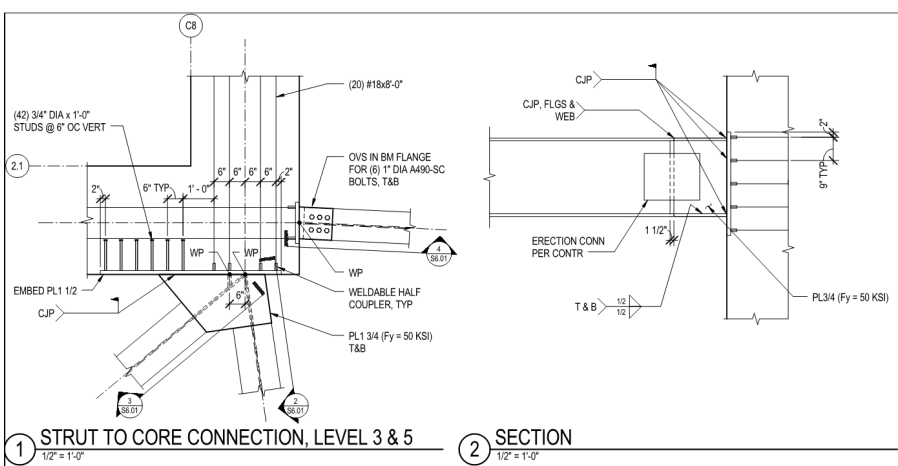
Collector to Shear Walls

Steel to Concrete



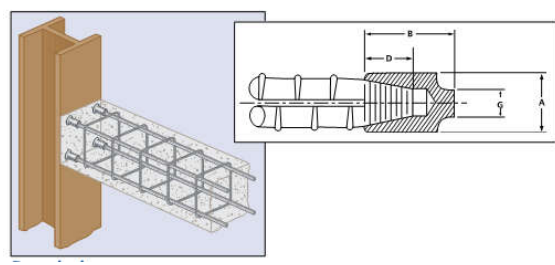
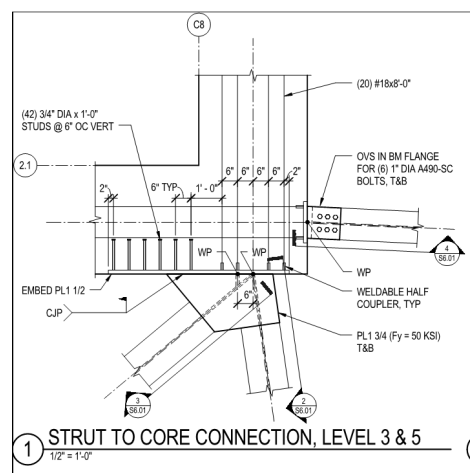
Collector to Shear Walls

Steel to Concrete



Collector to Shear Walls

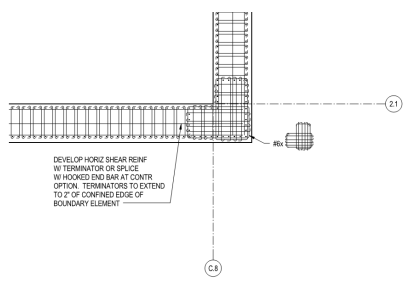
Steel to Concrete



1 STRUT TO CORE CONNECTION, LEVEL 3 & 5
1/2" = 1'-0"

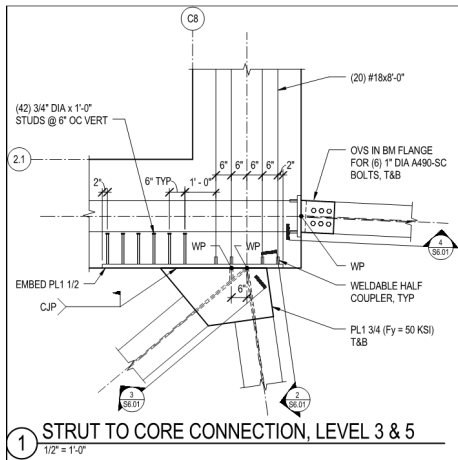
Collector to Shear Walls

Steel to Concrete



Collector to Shear Walls

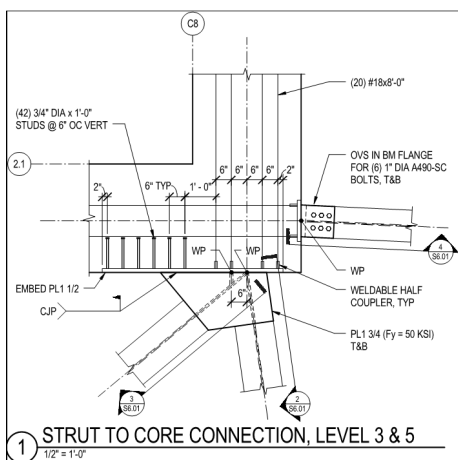
Steel to Concrete



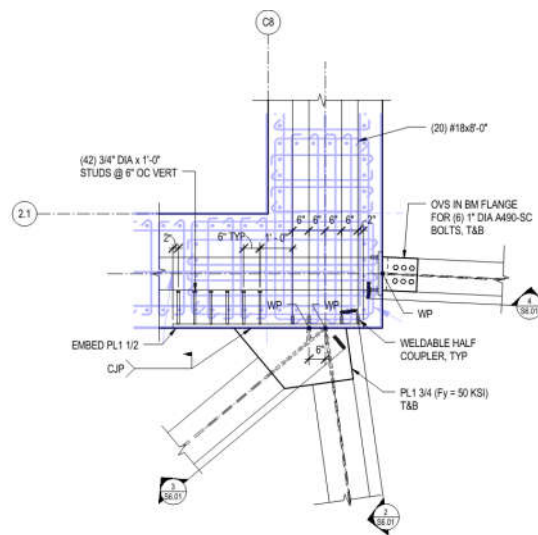
107

Collector to Shear Walls

Steel to Concrete



108



Collector to Shear Walls

Steel to Concrete

- Connections are critical
- Member sizes may be selected based on facilitating connections
- Pay attention to M/E/P/FP slab penetrations nearby
- Coordinate with wall reinforcing
- Understand the required development length



109

Collector to Shear Walls

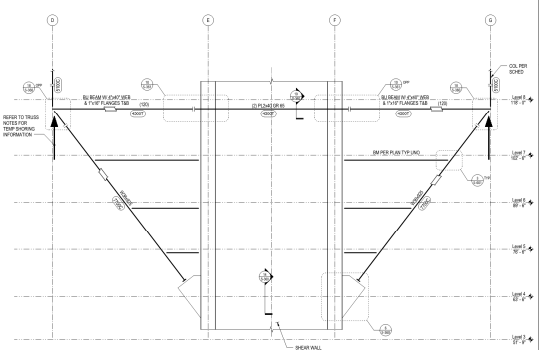
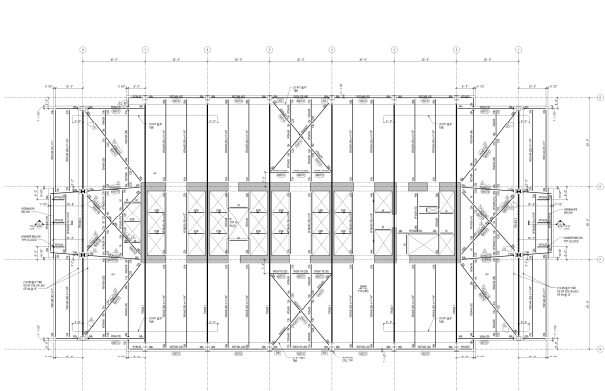
Steel to Concrete



110

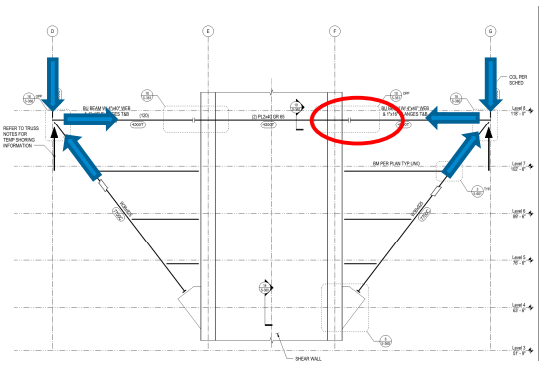
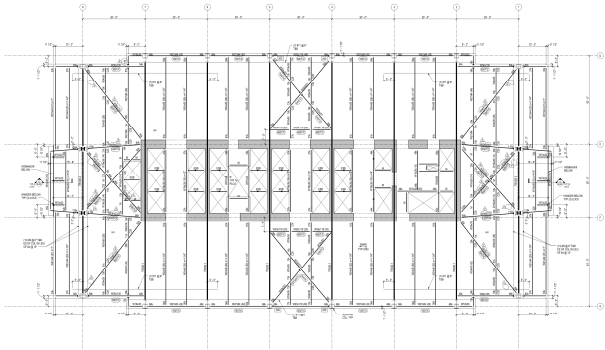
Collector to Shear Walls

Steel to Concrete



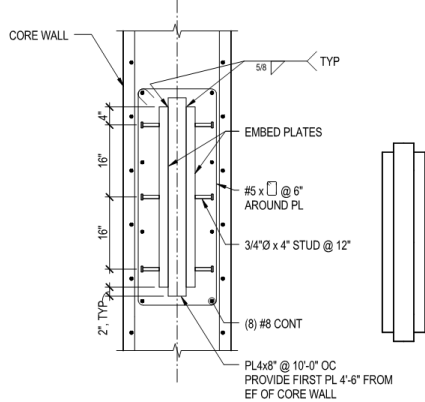
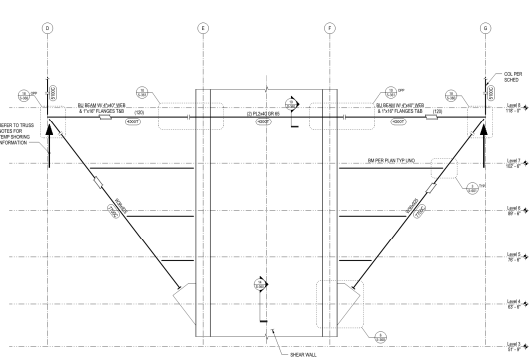
Collector to Shear Walls

Steel to Concrete



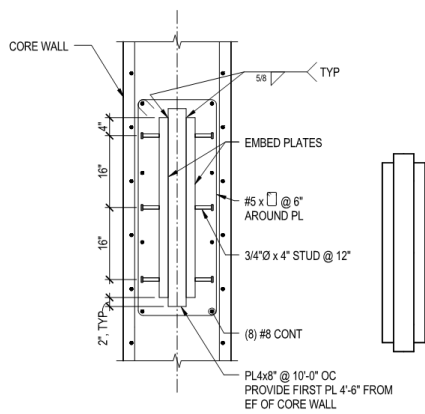
Collector to Shear Walls

Steel to Concrete



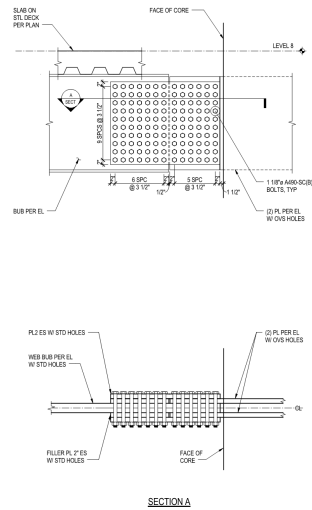
Collector to Shear Walls

Steel to Concrete



Collector to Shear Walls

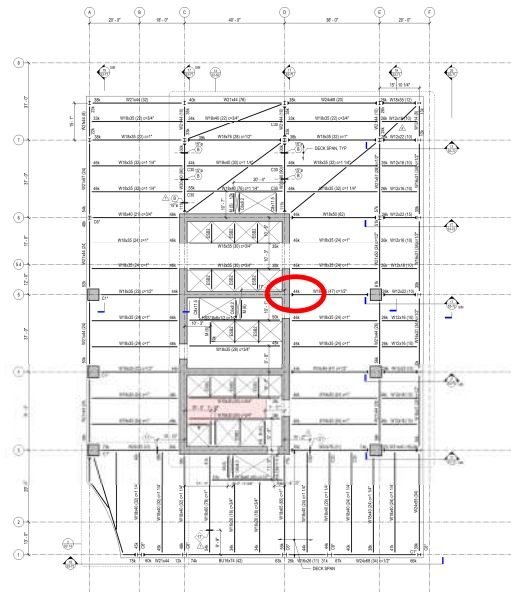
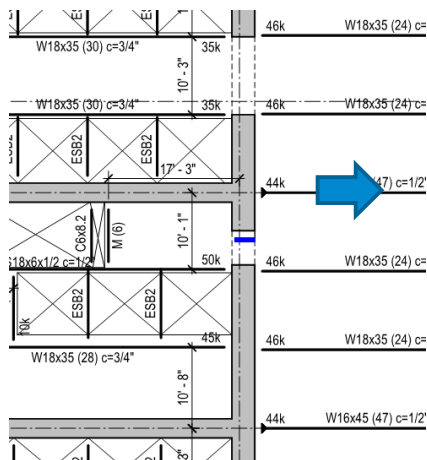
Steel to Concrete



115

Collector to CPSW (SpeedCore)

Steel to CPSW

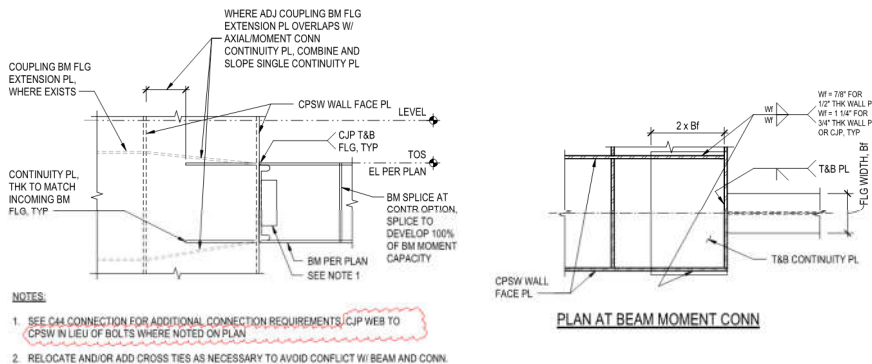


116



Collector to CPSW (SpeedCore)

Steel to CPSW



7 TYPICAL BEAM TO CPWS MOMENT CONNECTION



Guidance for Designers

- AISC *Seismic Design Manual, 3rd Edition, Part 8* (aisc.org/publications)
- National Earthquake Hazards Reduction Program (<https://www.nehrp.gov/library/techbriefs.htm>)



AISC | Questions?



CEU / PDH Certificates

For those participating at their own connection...

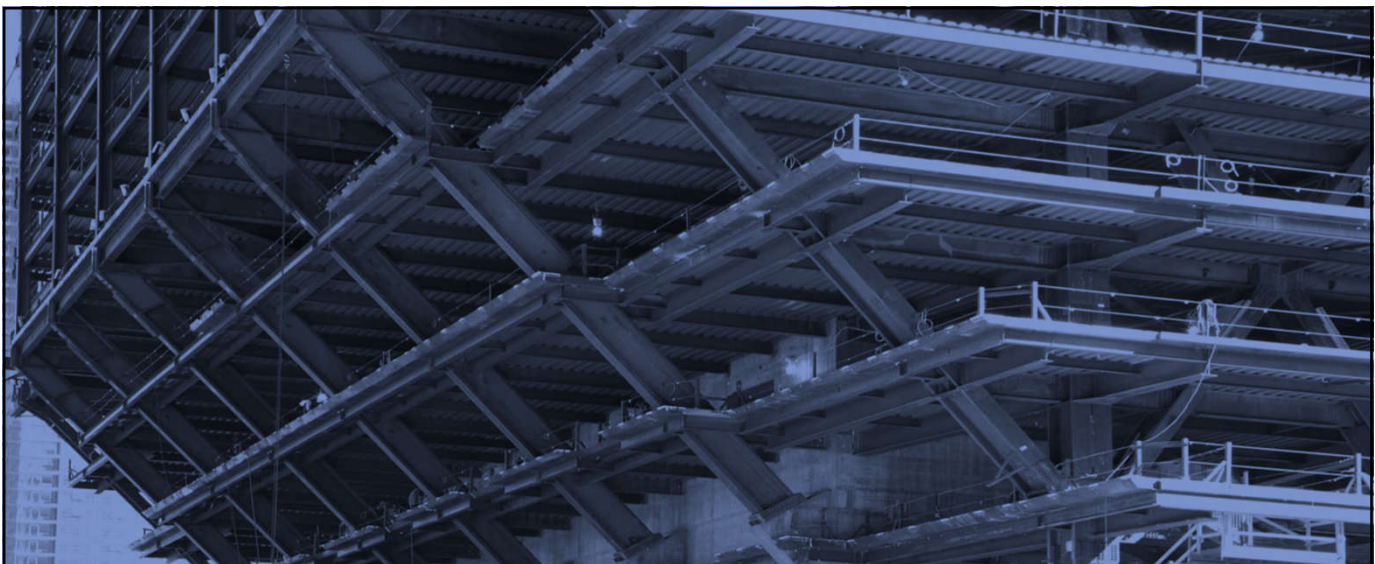
- Reporting attendance is not necessary.
- Certificates will be issued based on AISC's attendance record.
- You will be receiving certificates via email from registration@aisc.org.



CEU / PDH Certificates

For those participating at one connection with a group...

- Main registrant will report attendance via an online form. (The link will be provided in an email from registration@aisc.org.)
 - Username: Same as AISC website username.
 - Password: Same as AISC website password.
- Once attendance has been reported, each group member will be receiving certificates via email from registration@aisc.org.



AISC | Thank you

