




AISC
Night School


Thank you for joining our live webinar today.
We will begin shortly. Please standby.

Thank you.
Need Help?
Call ReadyTalk Support: 800.843.9166




Today's audio will be broadcast through the internet.

Alternatively, to hear the audio through the phone, dial 888 224 7958.




There's always a solution in steel!




Today's live webinar will begin shortly.
Please standby.
As a reminder, all lines have been muted. Please type any questions or comments through the Chat feature on the left portion of your screen.

Today's audio will be broadcast through the internet.
Alternatively, to hear the audio through the phone, dial 888 224 7958.




There's always a solution in steel!



AISC is a Registered Provider with The American Institute of Architects Continuing Education Systems (AIA/CES). Credit(s) earned on completion of this program will be reported to AIA/CES for AIA members. Certificates of Completion for both AIA members and non-AIA members are available upon request.

This program is registered with AIA/CES for continuing professional education. As such, it does not include content that may be deemed or construed to be an approval or endorsement by the AIA of any material of construction or any method or manner of handling, using, distributing, or dealing in any material or product.

Questions related to specific materials, methods, and services will be addressed at the conclusion of this presentation.



There's always a solution in steel!





Copyright Materials

This presentation is protected by US and International Copyright laws. Reproduction, distribution, display and use of the presentation without written permission of AISC is prohibited.

© The American Institute of Steel Construction 2017

The information presented herein is based on recognized engineering principles and is for general information only. While it is believed to be accurate, this information should not be applied to any specific application without competent professional examination and verification by a licensed professional engineer. Anyone making use of this information assumes all liability arising from such use.



There's always a solution in steel!



Course Description

Session 6: Frame Member and Connection Design
March 13, 2017

Lesson 7 begins with the design of a 60-foot-long crane runway girder, the backup girder, and the horizontal lacing which connects the backup beam to the runway girder. The design of the longitudinal bracing system is then presented including the roof longitudinal bracing, and the building longitudinal bracing. The loads and forces acting on the bracing members and struts are developed, the members selected, and typical details are discussed. The crane bumper force calculation is provided and the crane longitudinal bracing design is shown. The design of the end wall bracing is also provided. Connection details for the braces are provided.



There's always a solution in steel!



Learning Objectives

- List the steps in the procedure for the design of a 60' bay crane runway girder.
- Calculate the lateral deflection of the crane runway girder and design a backup girder to resist the horizontal movement.
- List the recommendations for efficient design of vertical bracing connections.
- List the key characteristics of economical bracing connection details.



There's always a solution in steel!



Design of Industrial Buildings

Session 7: Transfer Crane Girder and Longitudinal Building Bracing
March 27, 2017



Presented by
Jules Van de Pas, SE, PE
Vice President, Computerized Structural Design

There's always a solution in steel.



AISC Night School 13

Design of Industrial Buildings Lesson 7



Presenter:
Jules Van de Pas



There's always a solution in steel!

Design of an Industrial Crane Building

Lesson 7

- Sixty Foot Runway Girders
 - Perimeter Girder
 - Interior Girder
- Roof Longitudinal Bracing
- Longitudinal Building Bracing
- Longitudinal Crane Bracing
- End Wall Bracing



There's always a solution in steel!

10

Review of Design Criteria



There's always a solution in steel!

11

Project Description

- 50 ton, top running crane, Class D
- Quantity: 1 per aisle
- Hook height: 45 ft
- Roof type: Standing Seam on Joists
- Wall type: R- panel with continuous Zees



There's always a solution in steel!

12

Codes and Standards

- Building Code: IBC 2012
- Minimum Design Loads For Buildings And Other Structures (ASCE 7-10)
- Building Department Contact: John Smith
- Date: July 6, 2016
- Local Ordinances: None
- Wind Speed: 115 mph
- Wind Exposure: C
- Building Category: II



There's always a solution in steel!

13

Loads

- ROOF DEAD LOAD

– Roofing (SSR)	2.0 psf
– Insulation	1.0 psf
– Roof Bracing	1.0 psf
– Joists	3.0 psf
– Joist Girders	3.0 psf
– Columns	6.0 psf
– MEP Allowance	<u>3.0 psf</u>
– Total	19.0 psf
- WALL DEAD LOAD **3.0 psf**
 (Includes Girts)



There's always a solution in steel!

14

Local Code Requirements

- Frost Depth: 24 in.
- Rain Intensity:
 - 4.0 in. per hr (5 min/5yr)
 - 6.0 in. per hr (5 min/25yr)
- ROOF LIVE LOADS
 - 20.0 psf (reducible per building code not reducible per AISE tech report #13)
- Ground Snow Load: 15 psf



There's always a solution in steel!

15

Load Calculations - Snow

- Low Slope Roof Snow Load (slope <math><15^\circ</math>):

$$P_f = 0.7C_e C_t I P_g = 10.5 \text{ psf}$$
- Minimum Roof Snow for Low Slope Roof

$$P_m = I_s P_g = 15 \text{ psf}$$
 ← controls
- Check Rain-on-Snow Surcharge, slope $\frac{1}{4}$ " per ft.
 $(\text{Slope} = 1.19^\circ) < (W / 50 = 60 / 50 = 1.2)$ Add Surcharge

$$\Rightarrow P_f = 15 \text{ psf} + 5 \text{ psf} = 20 \text{ psf}$$
- Must consider unbalanced snow per 7.6 if slope is $\frac{1}{2}$ " per ft. or greater.



There's always a solution in steel!

16

Loads

• SEISMIC LOADS

- Spectral Acceleration, S_s : 1.054 g
- Spectral Acceleration, S_1 : 0.400 g
- Occupancy Category: II
- Site Class: D
 - Soil shear wave velocity, \bar{V}_s : 800 ft/sec
 - Standard penetration resistance, \bar{N} : 15 blows
 - Soil undrained shear strength, $\bar{\tau}_u$: 1500 psf
- Importance Factor, I: 1.0

- Seismic Design Category: D



There's always a solution in steel!

17

Load

- Structure is considered to be a “Nonbuilding Structure Similar to Buildings” per Chapter 15 of ASCE 7-10
- Transverse Direction from Table 15.4-1 OMF – Ordinary Moment Frame with permitted height increase
 $R = 2.5$ $\Omega_o = 2.0$ $C_d = 2.5$
Detailing per AISC 341 Height limit = 100 feet.
- Longitudinal Direction from Table 15.4-1 OCBF – Ordinary Concentrically Braced Frame with permitted height increase
 $R = 2.5$ $\Omega_o = 2.0$ $C_d = 2.5$
Detailing per AISC 341 Height limit of 160 ft.



There's always a solution in steel!

18

Load

Structure is considered to be a “Nonbuilding Structure Similar to Buildings”

- Refer to ASCE 7-10 Section 11.1.3

“Buildings whose purpose is to enclose equipment or machinery and whose occupants are engaged in maintenance or monitoring of that equipment, machinery or their associated processes shall be permitted to be classified as nonbuilding structures designed and detailed in accordance with Section 15.5 of this standard.”



There's always a solution in steel!

19

Design of 60 ft Runway Girder

Crane capacity = 50 tons (CMAA Class D)

Bridge weight = 90.8 kips

Trolley and hoist weight = 31.2 kips

Wheel load = 78 kips

Wheel spacing = 11.0 ft

Rail weight = 175 lbs/yard

Vertical impact = 25% of lifted load + trolley and hoist



There's always a solution in steel!

20

Design of an Industrial Crane Building

Lesson 7

- Sixty Foot Runway Girders
 - Perimeter Girder
 - Interior Girder
- Roof Longitudinal Bracing
- Longitudinal Building Bracing
- Longitudinal Crane Bracing
- End Wall Bracing



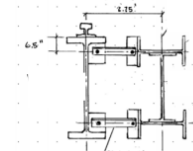
There's always a solution in steel!

21

Design of the 60 ft Crane Girders

Bracing is required for the 60' Girders

- Form a horizontal truss with the center girders and bracing
- Provide back-up beams for sidewall girders



These choices are based on building configuration.



There's always a solution in steel!

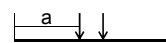
22

ASD Design of 60 ft Crane Girder

Deflection requirements: Locate wheel loads symmetrically placed about the girder centerline. $a=24.5$ ft (294 in.)

Vertical: $L/800 = (60 \text{ ft.})(12)/800 = 0.9$ in.

Horizontal: $L/400 = (60 \text{ ft.})(12)/400 = 1.8$ in.



$$I_{xreqd}: \Delta_{max} = \frac{P_a a}{24EI} (3L^2 - 4a^2)$$

$$\Delta_{max} = \frac{(78)(294)}{24(29000)I} (3(720)^2 - 4(294)^2) = \frac{39849}{I}$$

$$I_{xreqd} = \frac{39849}{\Delta_{max}} = \frac{39849}{.9} = 44277 \quad W40x593 \quad I_x = 50,400 \text{ in}^4$$



There's always a solution in steel!

23

Design of 60 ft Runway Girder

Horizontal stiffness requirement:

$$\Delta_{max} = \frac{(6.6)(294)}{24(29000)I} (3(720)^2 - 4(294)^2) = \frac{3372}{I}$$

$$I_{yreqd} = \frac{3372}{\Delta_{max}} = \frac{3372}{1.8} = 1873$$

$$W40x593 \quad I_{y/2} = 2520 \text{ in}^4 / 2 = 1260 \text{ in}^4 < 1873 \text{ in}^4 \quad NG$$

Bottom flange must be laterally braced per AISC #13 when $L > 36$ ft. provide a backup beam.

Try W21x44, $I_x = 843 \text{ in}^4$ Total I provided = 2103 in^4



There's always a solution in steel!

24

Design of 60 ft Runway Girder

Calculate Moments:

$$DL \text{ (Girder + Rail + Clamps)} = 593 + 175/3 + 20 = 671 \text{ lbs/ft}$$

$$M_{DL} = (1/8)wL^2 = (1/8)(0.67 \text{ kips/ft})(60 \text{ ft})^2 = 302 \text{ kip-ft}$$

M_{LL} : See table 3-23 case 44

$$M_{LL} = \frac{78}{2(60)}(60 - 11/2)^2 = 1931 \text{ kip-ft. without impact}$$

$$M_x = M_{DL} + M_{LL} = 302 + 1.25(1931) = 2716 \text{ kip-ft.}$$

$$M_y = \frac{6.6}{2(60)}(60 - 11/2)^2 = 163 \text{ kip-ft. (total)}$$

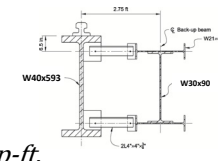
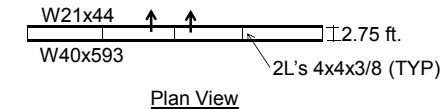


There's always a solution in steel!

25

Design of 60 ft Runway Girder

Analysis with backup beam: Simply allocate lateral load based on the relative stiffness of each beam.



W40 M_y : From relative stiffness:
 $M_y = (1260 \text{ in}^4 / 2103 \text{ in}^4) 163 \text{ kip-ft.} = 98 \text{ kip-ft.}$

W21 M_x : From relative stiffness:
 $M_x = (843 \text{ in}^4 / 2103 \text{ in}^4) 163 \text{ kip-ft.} = 65 \text{ kip-ft.}$



There's always a solution in steel!

26

Design of 60 ft Runway Girder

Available Moment: $L_b = 60 \text{ ft.}$, $L_r = 63.9 \text{ ft.}$, $L_p = 13.4 \text{ ft.}$
See table 3-2

$L_p < L_b \leq L_r$ Therefore use Equation F2 - 2:

$$M_n = C_b \left[M_p - (M_p - .7F_y S_x) \left(\frac{L_b - L_p}{L_r - L_p} \right) \right] \leq M_p$$

$$M_n = 1.0 \left[11500 - (11500 - .7(50) \left(\frac{2340}{12} \right)) \left(\frac{60 - 13.4}{63.9 - 13.4} \right) \right] \leq 11500$$

$$M_n = 7186 \text{ kip-ft.} \quad \frac{M_n}{\Omega} = \frac{7178}{1.67} = 4303 \text{ ft-kip}$$



There's always a solution in steel!

27

Design of 60 ft Runway Girder

Check combined forces on girder compression flange:

$$\frac{M_x}{M_{nx}/\Omega} + \frac{M_y}{M_{ny}/\Omega} \leq 1.0 \quad \frac{2716}{4303} + \frac{98}{600} = .79 \text{ OK!}$$

where:

$$M_x = 2716 \text{ kip-ft.}$$

$$M_y = 98 \text{ kip-ft.}$$

$$M_{nx}/\Omega = 4303 \text{ kip-ft.}$$

$$M_{ny}/\Omega = F_y Z_y / 2 / \Omega = (50)(481)/2 / 1.67 / 12 = 600 \text{ kip-ft.}$$



There's always a solution in steel!

28

Design of 60 ft Runway Girder

Check W21x44 backup beam:

$$M_{rx} = 65 \text{ kip-ft}$$

$$M_{nx}/\Omega = F_y Z_x / \Omega = (50)(95.4)/12/1.67 = 238 \text{ kip-ft}$$

$$M_{nx}/\Omega = 238 \text{ kip-ft} > 65.0 \text{ kip-ft} \text{ ok}$$

Use W21x44 backup beam for deflection control & per AIST.



There's always a solution in steel!

29

Design of 60 ft Runway Girder

Evaluate for Seismic Loads: Design Crane Girder to resist loads based on ASCE 7-10 Chapter 13:

$$F_p = \frac{.4a_p S_{ds} W_x}{\left(\frac{R_p}{I_p}\right)} \left(1 + 2\frac{z}{h}\right)$$

$$a_p = 2.5, \quad R_p = 3.5$$

(Table 13.5-1 "Other flexible components, High deformability element and attachments)

$$I_p = 1.0 \text{ (section 13.1.3)}$$

$$z = 45.9 \text{ ft. } h = 60.0 \text{ ft. } S_{ds} = .770$$



There's always a solution in steel!

30

Design of 60 ft Runway Girder

Evaluate for Seismic Loads: Continued

$$F_p = \frac{.4(2.5)(.77)W_x}{\left(\frac{3.5}{1.0}\right)} \left(1 + 2\frac{45.9}{60.0}\right) = .56W_p$$

$$F_p = .56(122 \text{ kips}) = 68.3 \text{ kips } F_p/\text{wheel} = 17.1 \text{ kips}$$

Maximum vertical wheel loads for unloaded crane are 35.8 kips



There's always a solution in steel!

31

Design of 60 ft Runway Girder

Evaluate for Seismic Loads (Continued):

Recall: $M_{DL} = 302 \text{ kip-ft}$

$M_{LL} = 1931 \text{ kip-ft}$ (For Vert. wheel loads of 78 kips)

$M_y = 163 \text{ kip-ft}$ (For Lat. wheel loads of 6.6 kips)

For load Case 5a: $(1.11)(D + C_d) + 0.7\rho Q_E$

$M_x = 1.11(302 + (35.8/78)(1931)) = 1319 \text{ kip-ft}$

$M_y = \frac{.7(17.1)}{(6.6)} 163 = 296 \text{ kip-ft}$ (total)

$M_y = (1260/2103)296 \text{ kip-ft} = 177 \text{ kip-ft}$ (on W40)



There's always a solution in steel!

32

Design of 60 ft Runway Girder

For Load Case 5a W40 Crane Girder

$$\frac{M_x}{M_{nx}/\Omega} + \frac{M_y}{M_{ny}/\Omega} \leq 1.0 \quad \frac{1319}{4303} + \frac{177}{600} = .60 \text{ OK}$$

W21: M_x From relative stiffness:

$$M_{rx} = (843/2103)296 = 119 \text{ kip-ft}$$

$$M_{cx} = F_y Z_x / \Omega = (50)(95.4) / 12 / 1.67 = 238 \text{ kip-ft}$$

$$M_{cx} = 238 \text{ kip-ft} > 119.0 \text{ kip-ft ok}$$



There's always a solution in steel!

33

Design of 60 ft Runway Girder

Recall from Lesson 5, Check Limit states for:

- Shear
- Web Local Yielding J10.2
- Web Local Crippling J10.3
- Web Sidesway Buckling J10.4

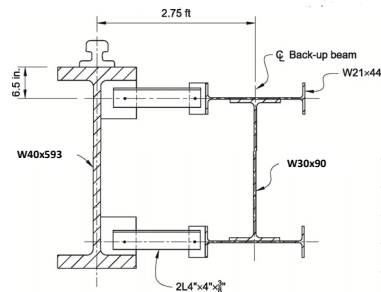


There's always a solution in steel!

34

Design of 60 ft Runway Girder

Evaluate for stress riser created by the back up beam connection:



There's always a solution in steel!

35

Design of 60 ft Runway Girder

Check the fatigue limit state due to the welded plate to the girder web and tension flange. Refer to AISC Appendix 3.

Table A-3.1, Section 5.7, "Base metal of tension loaded plate elements and on girders and rolled beam webs or flanges at toe of transverse fillet welds adjacent to welded transverse stiffeners."

TABLE A-3.1 (continued) Fatigue Design Parameters	
Illustrative Typical Examples	
SECTION 5 - WELDED JOINTS TRANSVERSE TO DIRECTION OF STRESS	
5.5	
5.6	
5.7	



There's always a solution in steel!

36

Design of 60 ft Runway Girder

Assume 500,000 cycles: $n_{SR} = 500,000$,

Section 5.7 Applies (stress cat. C) $C_f = 44 \times 10^8$, $F_{TH} = 10 \text{ ksi}$

$$F_{SR} = \left(\frac{C_f}{n_{SR}}\right)^{0.333} \geq F_{TH} \quad F_{SR} = (44 \times 10^8 / 5 \times 10^5)^{0.333} = 20.6 \text{ ksi}$$

$$f_b = M/S_x = (1931 \text{ kip-ft.})(12) / 2340 \text{ in.}^3 = 9.9 \text{ ksi} \leq 20.6 \text{ ksi ok}$$

For Comparison without the welded attachment

Section 1.1 Applies (stress cat. A) $C_f = 250 \times 10^8$, $F_{TH} = 24 \text{ ksi}$

$$F_{SR} = (250 \times 10^8 / 5 \times 10^5)^{0.333} = 36.7 \text{ ksi}$$



There's always a solution in steel!

37

Design of an Industrial Crane Building

Lesson 7

- Sixty Foot Runway Girders
 - Perimeter Girder
 - Interior Girder
- Roof Longitudinal Bracing
- Longitudinal Building Bracing
- Longitudinal Crane Bracing
- End Wall Bracing

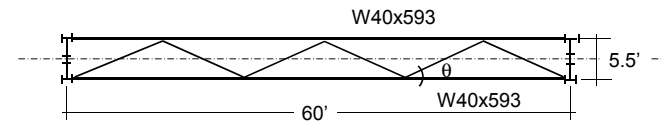


There's always a solution in steel!

38

Design of 60 ft Runway Girder

Center Condition:



Try bolting angles to the flanges of the girders. Check angle strength and bending stresses in the angles due to deflection of the runway beams.

Design the bracing angles for the crane lateral loads, or seismic loads, or 2.5% of the axial load in the flange (AIST #13). AIST provision is for the tension flange. Apply criteria to both flanges.

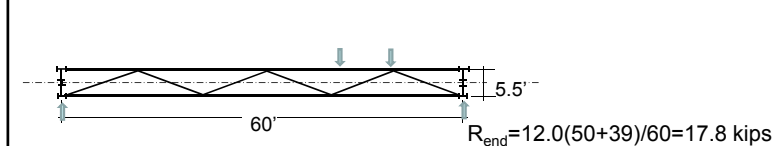


There's always a solution in steel!

39

Design of 60 ft Runway Girder

Determine brace force: seismic (.7e=12.0 kips/wheel) controls over lateral crane load (6.6 kips/wheel):



The maximum force in a diagonal member occurs when the crane end truck is located at the end panel point.

$$\text{Max. Angle Force} = 17.8 (137/66) = 36.9 \text{ kips}$$

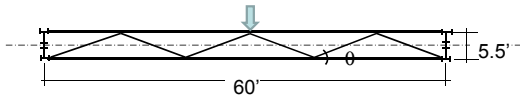


There's always a solution in steel!

40

Design of 60 ft Runway Girder

Determine brace force: 2.5% of W40 flange force



Average f_b in bottom flange = 12.87 ksi
 Brace force = $.025f_b A = .025(12.87)(3.23 \text{ in.})(16.7) = 17.4 \text{ kips}$
 Applied at mid span
 Max Angle Force = $(17.4/2)(137/66) = 18.1 \text{ kips} < 36.9 \text{ kips}$
 Seismic Load Controls



There's always a solution in steel!

41

Design of 60 ft Runway Girder

Angle Strength: $L = 11.4 \text{ ft.}$

Try 2L4x4x5/16 From AISC Manual Table 4-8:

$$P_n / \Omega = 54.5 \text{ kips} > 36.9 \text{ kips OK}$$

Table 4-8 (continued)
 Available Strength in Axial Compression, kips $F_y = 36 \text{ ksi}$
 Double Angles—Equal Legs

Shape	2L4-4s							
	$5/8$	$5/8$	$5/8$	$5/8$	$5/8$	$5/8$	$5/8$	$5/8$
lb/ft	27.0	31.4	25.6	22.6	19.6	16.4	13.2	
Design	P_n / Ω	P_n / Ω	P_n / Ω	P_n / Ω	P_n / Ω	P_n / Ω	P_n / Ω	P_n / Ω
0	226	261	189	205	142	142	103	114
2	226	246	185	203	138	138	101	112
4	215	234	183	202	134	134	101	106
6	193	206	164	187	124	124	96	103
8	168	182	142	165	114	114	88	95
10	136	150	117	136	93	93	74	80
12	107	121	93	107	72	72	58	63
14	80	93	71	80	55	55	44	47
16	61	71	54	61	42	42	34	37
18	48	56	42	48	33	33	27	29
20	38	44	33	38	26	26	21	23

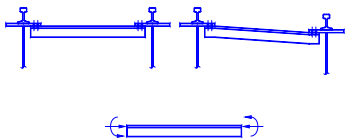


There's always a solution in steel!

42

Design of 60 ft Runway Girder

Check fatigue stress in angles from girder deflection, assume ends of braces fixed condition: $M = 6EI\Delta/L^2 \Delta = 0.79 \text{ in.}$



$$M = (6)(29000)(2 \times 3.67 \text{ in.}^2)(0.79 \text{ in.}) / (137)^2 = 53.8 \text{ kip-in.}$$

$$f_b = 2M / S_{xt} = 2 \times 53.8 / 2.54 = 42.3 \text{ ksi NG!}$$

Avoid connection that resists vertical movement.



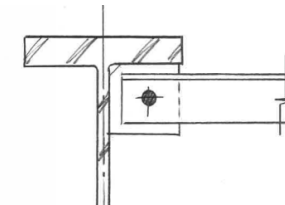
There's always a solution in steel!

43

Design of 60 ft Runway Girder

Check Connection for applicable limit states:

- Bolt shear (J3.1)
- Bolt bearing (J3.10)
- Weld and base metal shear rupture (J2.4, J4.2)
- Block shear on angle and gusset (J4.3)
- Tensile rupture on net angle section (D2)



There's always a solution in steel!

44

Polling Question



There's always a solution in steel!

45

Design of an Industrial Crane Building

Lesson 7

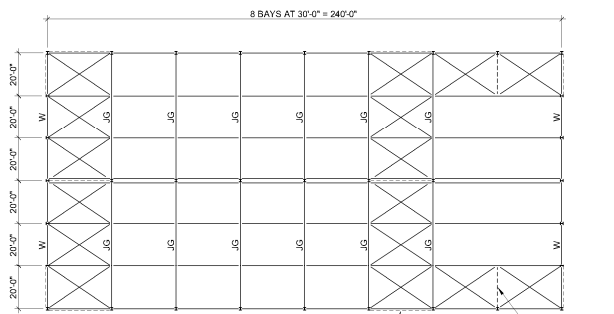
- Sixty Foot Runway Girders
 - Perimeter Girder
 - Interior Girder
- **Roof Longitudinal Bracing**
- Longitudinal Building Bracing
- Longitudinal Crane Bracing
- End Wall Bracing



There's always a solution in steel!

46

Roof Bracing Plan



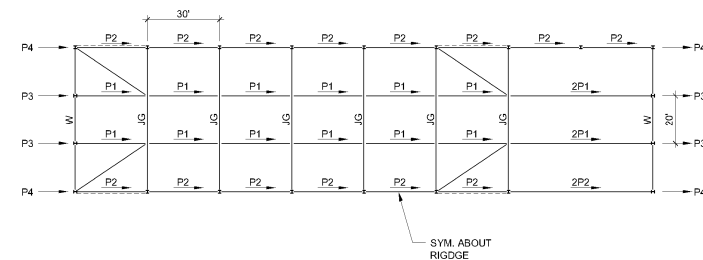
NOTE: ALL MEMBERS ON THIS PLAN HAVE AXIAL STRUT FORCES RESULTING FROM WIND AND SEISMIC LATERAL FORCES. THESE AXIAL FORCES SHALL BE PROVIDED TO THE JOIST MANUFACTURER.



There's always a solution in steel!

47

Tension Only Brace Forces



There's always a solution in steel!

48

Load Calculations - Seismic

Recall from lesson 5:

- The seismic coefficient C_s in the OMF direction was calculated as:

$$\frac{S_{D1}}{T(R/I_e)} = \frac{.427}{1.04(2.5/1.0)} = 0.16 \quad C_s = .16 \text{ OMF direction}$$

In the OCBF direction the framing is stiffer. The period is shorter.

$$\frac{S_{DS}}{R/I_e} = \frac{0.77}{2.5/1.0} = 0.31 \quad C_s = .31 \text{ OCBF direction}$$



There's always a solution in steel!

49

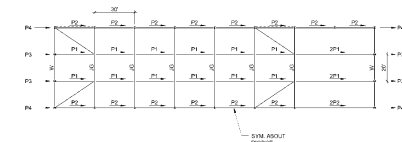
Roof Lateral Loads

- Roof Seismic Loads

$$\begin{aligned} 0.7E &= 0.7\rho C_s W \\ &= (0.7)(1.0)(0.31)(19\text{psf} - 6\text{psf}) \\ &= 2.8 \text{ psf} \end{aligned}$$

$$\begin{aligned} P1 &= (2.8\text{psf})(30\text{ft.})(20\text{ft.})/1000 \\ &= 1.7 \text{ kips} \end{aligned}$$

$$\begin{aligned} P2 &= 0.5 * P1 \\ &= 0.8 \text{ kips} \end{aligned}$$



There's always a solution in steel!

50

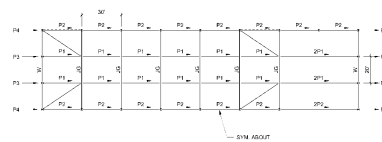
Roof Lateral Loads Cont.

- Endwall Loads (Seismic continued)

$$\begin{aligned} 0.7E &= 0.7\rho C_s W \\ &= (0.7)(1.0)(0.31)(3\text{psf}) \\ &= 0.65 \text{ psf} \end{aligned}$$

$$\begin{aligned} P3 &= (0.65\text{psf})(30\text{ft.})(20\text{ft.})/1000 \\ &= 0.4 \text{ kips} \quad \text{Use 0.5 kips} \end{aligned}$$

$$\begin{aligned} P4 &= 0.5 * P3 \\ &= 0.25 \text{ kips} \end{aligned}$$



There's always a solution in steel!

51

Roof Lateral Loads Cont.

- Endwall Loads Cont.

– Wind vs. Seismic Comparison

$$\begin{aligned} P_w &= .6(22.2\text{psf} + 13.9\text{psf})(30\text{ft.})(60\text{ft.})/1000 \\ &= 39.0 \text{ kips} \end{aligned}$$

$$\begin{aligned} P_e &= (2.8\text{psf})(60\text{ft.})(240\text{ft.})/1000 + 4(0.8\text{k}) \\ &= 43.5 \text{ kips} \end{aligned}$$

$P_e > P_w$, therefore seismic will control roof bracing design



There's always a solution in steel!

52

Analysis:

Perform a second order analysis of the bracing system including:

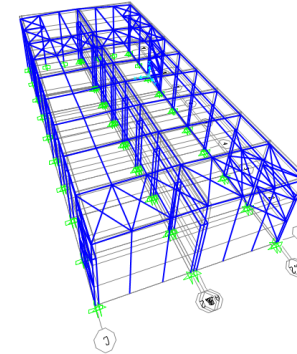
- The vertical SFRS
- The diaphragm bracing
- Frames and columns
- All loads including leaner column loads



There's always a solution in steel!

53

Analysis Cont.



There's always a solution in steel!

54

Strap Brace Design

Conservatively : Design for analysis results based on load combinations with “overstrength factors” Ω_o level forces.

- Based on analysis: $P_r = 18$ kips (max)

$$\begin{aligned} P_n/\Omega &= F_y A_g / \Omega \\ &= (36 \text{ksi})(1/4 \text{in.})(4 \text{in.}) / 1.67 \\ &= 21.6 \text{ kips, Okay} \end{aligned}$$

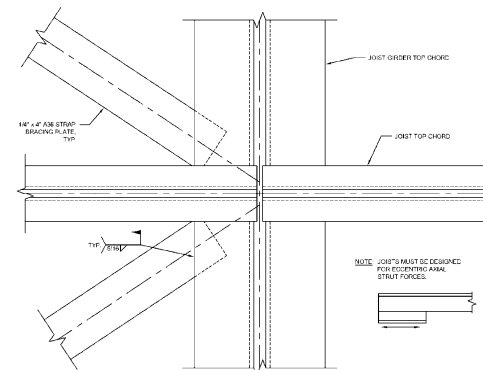
Use 1/4" x 4" A36 Plate



There's always a solution in steel!

55

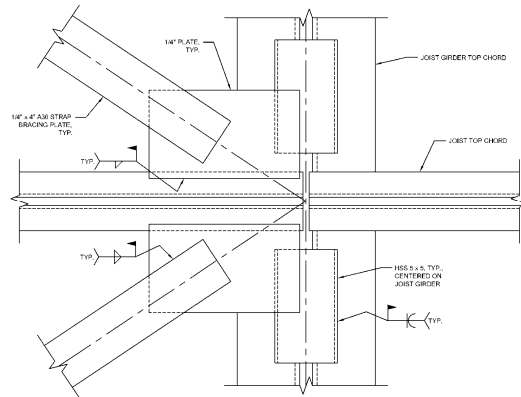
Strap Bracing Connection



There's always a solution in steel!

56

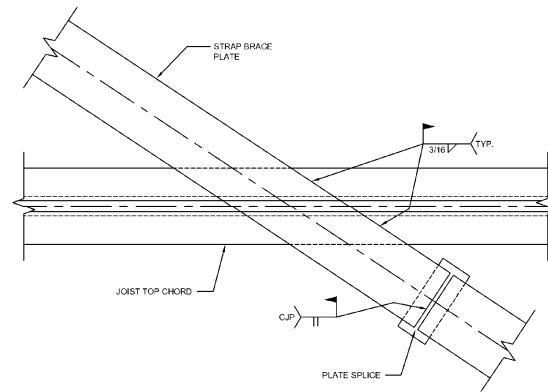
Strap Bracing Alternate Connection



There's always a solution in steel!

57

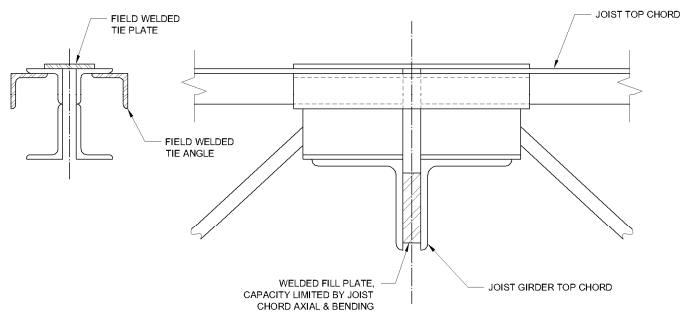
Strap Bracing Connection



There's always a solution in steel!

58

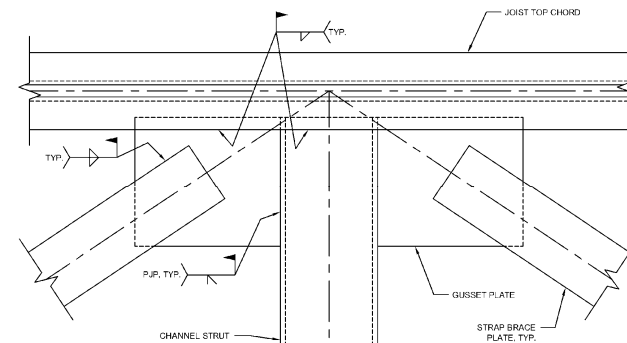
Joist Tie Connection Options



There's always a solution in steel!

59

Strap Bracing at Wind Column Strut



There's always a solution in steel!

60

Design of an Industrial Crane Building

Lesson 7

- Sixty Foot Runway Girders
 - Perimeter Girder
 - Interior Girder
- Roof Longitudinal Bracing
- **Longitudinal Building Bracing**
- Longitudinal Crane Bracing
- End Wall Bracing



There's always a solution in steel!

61

OCBF AISC 341 Section F1

Members:

- Braces must satisfy the requirements for Section D1.1 for *moderately ductile members*.

Connections:

- Load based on the amplified seismic load but need not exceed:
 - Tension: The expected yield strength of the brace $R_y F_y A_g$ (LRFD) or $R_y F_y A_g / 1.5$ (ASD)
 - Compression: The lesser of $R_y F_y A_g$ (LRFD) or $R_y F_y A_g / 1.5$ (ASD) and $1.14 F_{cre} A_g$ (LRFD) or $1.14 F_{cre} A_g / 1.5$ (ASD)

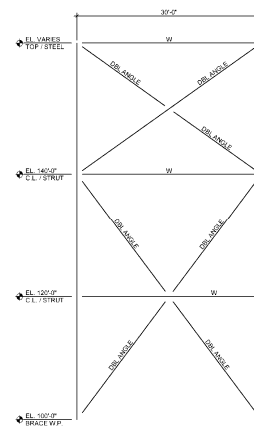
F_{cre} is calculated based on $R_y F_y$ and length from brace end to end



There's always a solution in steel!

62

Typical Vertical Brace Elevation



There's always a solution in steel!

63

Brace Struts

- Strut Force
 - $P_r = 39.4$ kips
- W12x45 Axial Strength
 - $P_n / \Omega = 57.9$ kips (AISC Table 4-1, pg. 4-20)

Use W12x45 struts



There's always a solution in steel!

64

Lower Brace Forces

- Brace Member Design Force
 $P_r = 65.7$ kips
- Connection Design Force (Ω load combinations)
 $P_r = 101$ kips



There's always a solution in steel!

65

Brace Strength

Try 2-L4x4x3/8 Bracing

- Yield Strength (AISC 360 Section D2)
 $P_n/\Omega = F_y A_g/\Omega$
 $= (36\text{ksi})(2)(2.86\text{in.}^2)/1.67$
 $= 123.3$ kips > 65.7 kips, okay
- Rupture Strength (AISC 360 Section D2)
 $P_n/\Omega = F_u A_e/\Omega$ $A_e = U A_n$ $U = .8$ (Table D3.1)
 $= (58\text{ksi})(2)(0.8)(2.86 - (1.125)(3/8))/2$
 $= 113.1$ kips > 101 kips, okay



There's always a solution in steel!

66

Vertical Bracing Design

Check 2-L4x4x3/8
Bracing for moderately
ductile criteria

$$b/t = 4/.375 = 10.667$$

$$\lambda_{md} = .38 \sqrt{E/F_y} = .38 \sqrt{29000/36} = 10.78$$

$$b/t \leq \lambda_{md} \quad \text{OK}$$

Use 2-L4x4x3/8

Description of Element	Width-to-Thickness Ratio	Limiting Width-to-Thickness Ratio		Example
		For Highly Ductile Members	For Moderately Ductile Members	
Uniformly Stressed Flanges of rolled or built-up I-sections, channels, channels with lips, legs of angle angles or double angle members with connections substantially perpendicular to axis of angle or web of channel section	b/t	$0.38\sqrt{E/F_c}$	$0.38\sqrt{E/F_c}$	
		$0.45\sqrt{E/F_c}$	not applicable	
		$0.30\sqrt{E/F_c^{1.5}}$	$0.30\sqrt{E/F_c}$	
Web of rectangular HSS	h/t	$0.38\sqrt{E/F_c^{1.5}}$	$0.38\sqrt{E/F_c}$	
		$0.38\sqrt{E/F_c^{1.5}}$	$0.38\sqrt{E/F_c^{1.5}}$	
Flanges of boxed or built-up I-sections and built-up box sections	b/t	$0.38\sqrt{E/F_c^{1.5}}$	$0.38\sqrt{E/F_c^{1.5}}$	
		$0.38\sqrt{E/F_c^{1.5}}$	$0.38\sqrt{E/F_c^{1.5}}$	
Side plates of boxed or built-up I-sections and built-up box sections used as diagonal bracing	b/t	$0.38\sqrt{E/F_c^{1.5}}$	$0.38\sqrt{E/F_c^{1.5}}$	
		$0.38\sqrt{E/F_c^{1.5}}$	$0.38\sqrt{E/F_c^{1.5}}$	
Web of rolled or built-up I-sections used as diagonal bracing	h/t	$1.48\sqrt{E/F_c}$	$1.48\sqrt{E/F_c}$	
		$1.48\sqrt{E/F_c}$	$1.48\sqrt{E/F_c}$	



There's always a solution in steel!

67

Vertical Brace Connection Considerations

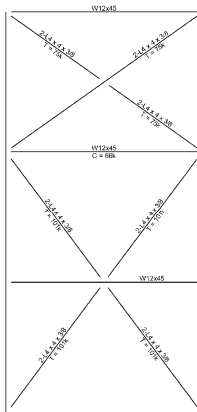
- Keep connections simple whenever possible.
- Use field bolted connections whenever possible.
- Locate the "Whitmore" section outside of the surrounding members for thick gusset plates.
- Use the Uniform Force Method to determine force distribution in the connection. This method is described in Part 13 of the 14th Edition AISC Manual.
- See AISC Design Guide #29 Vertical Bracing Connections Analysis and Design



There's always a solution in steel!

68

Building Brace Summary

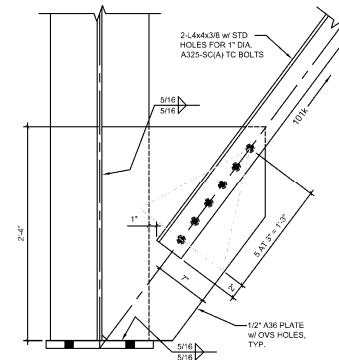


For deep columns verify the bracing system provides torsional stability for the columns per the AISC Appendix 6 requirements.



69

Brace Connection at Column Base



Note SC designation:

Bolted connection must be constructed as if Slip Critical.

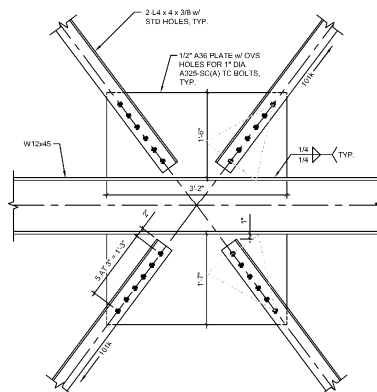
If OVS holes are used limit state for bolt slip need not exceed the force based on the load combinations not including the amplified seismic load.



There's always a solution in steel!

70

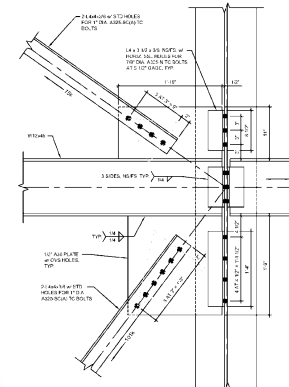
Brace Connection



There's always a solution in steel!

71

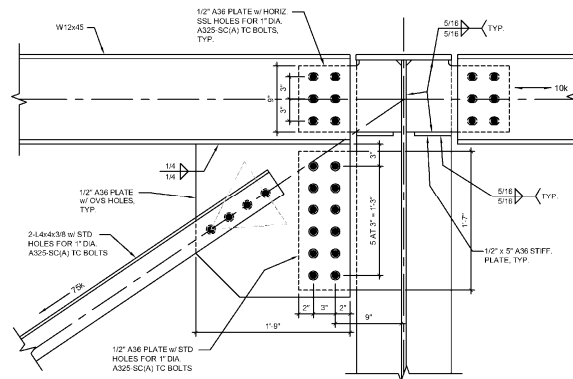
Brace Connection Detail



There's always a solution in steel!

72

Brace Connection at Roof



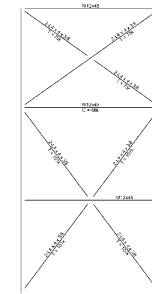
There's always a solution in steel!

73

BRACING AT TRUSS BOTT. CHORD

The OMF columns need to be directly or indirectly braced at the hinge locations.

- Use Appendix 6.
- Since the truss is 5' deep, working a 5' deep panel into the longitudinal bracing is not practical. Use knee braces to the edge joist or edge beam.



There's always a solution in steel!

74

Design of an Industrial Crane Building

Lesson 7

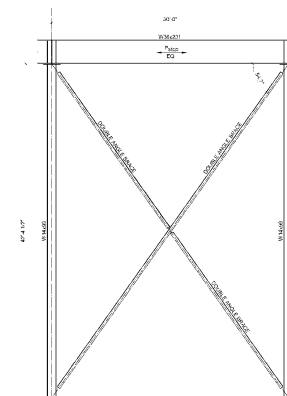
- Sixty Foot Runway Girders
 - Perimeter Girder
 - Interior Girder
- Roof Longitudinal Bracing
- Longitudinal Building Bracing
- **Longitudinal Crane Bracing**
- End Wall Bracing



There's always a solution in steel!

75

Crane Longitudinal Bracing



There's always a solution in steel!

76

Crane Bumper Force

- Tractive Force, C_{Is}
 $2C_{Is} = (2)(0.20)(78\text{k/wheel})$
 $= 31.2 \text{ kips}$
- Crane Weight, C_d
 $10\%C_d = (0.10)(90.8+31.2)$
 $= 12.2 \text{ kips}$

Refer to AISC Design Guide 7



There's always a solution in steel!

77

Crane Longitudinal Seismic OCBF Forces

- Total seismic weight on one runway:
 $W = (2*35.8\text{k}) + (.309*30\text{x}6 + .671*60) + (.09*8*45/2) = 183.7 \text{ kips}$
 $0.7E = (0.7)(.31)(183.7 \text{ kips})$
 $= 39.7 \text{ kips}$
- For member design,
 $0.7\rho E = (1.3)(39.7)$
 $= 51.8 \text{ kips, controls over bumper force}$
- For connection design,
 $0.7\Omega_o E = (2)(39.7)$
 $= 79.4 \text{ kips}$



There's always a solution in steel!

78

Crane Brace Design

Two Braces provided each side of runway

- Yielding Check,
 $P = 51.8\text{k}/2/\cos(54.7^\circ) = 44.8 \text{ kips}$
 $A = \Omega P/F_y$
 $= (1.67)(44.8\text{k})/36\text{ksi}$
 $= 2.1 \text{ in.}^2$
 Try 2-L4x4x3/8 braces $A_g = 5.72 \text{ in.}^2$



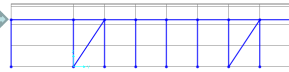
There's always a solution in steel!

79

Crane Brace Design

Second Order Analysis is required!

Calculate $\sum P_{e2}$ from AISC Eq. A-8-7

- From 1st-order analysis: 
 $\sum H = 51.8 \text{ kips}$ $\Delta_H = .36 \text{ in.}$
 $R_M = 1.00$ (braced frame)
- Elastic buckling load from Eq. C2-6b
 $\sum P_{e2} = R_M \frac{\sum HL}{\Delta_H} = 1.00 \frac{(51.8)(540)}{.36} = 78794 \text{ kips}$
 (lateral load, at crane ht. Δ at crane ht. = 540")



There's always a solution in steel!

80

Crane Brace Design

- Summation of Supported Gravity Load

$$\alpha \sum P_{nt} = 1.6(168) = 268 \text{ kips}$$

- 2nd Order P-Δ multiplier from Eq. C2-3

$$B_2 = \frac{1}{1 - \frac{\alpha \sum P_{nt}}{\sum P_{e2}}} = \frac{1}{1 - \frac{1.6(183.7)}{78794}} = 1.004$$



There's always a solution in steel!

81

Crane Brace Design

Two Braces provided each side of runway

- 2-L4x4x3/8 braces $A_g = 5.72 \text{ in}^2$

Member:

$$P_r = 44.8 \text{ kip} < P_n/\Omega = (36)(5.72)/1.67 = 123.3 \text{ kips}$$

Member at Connection (Ω_o Force):

$$P_r = 68.7 \text{ kips}$$

$$P_n/\Omega = F_u A_n/\Omega$$

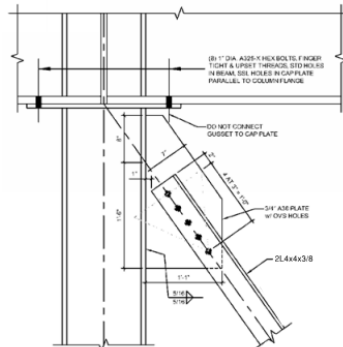
$$P_n/\Omega = (58 \text{ ksi})(0.8)(5.72 - 2 \cdot 1.125 \cdot 0.375)/2 = 113.1 \text{ kips} > 68.7 \text{ kips, okay}$$



There's always a solution in steel!

82

Crane Brace Connection



There's always a solution in steel!

83

Design of an Industrial Crane Building

Lesson 7

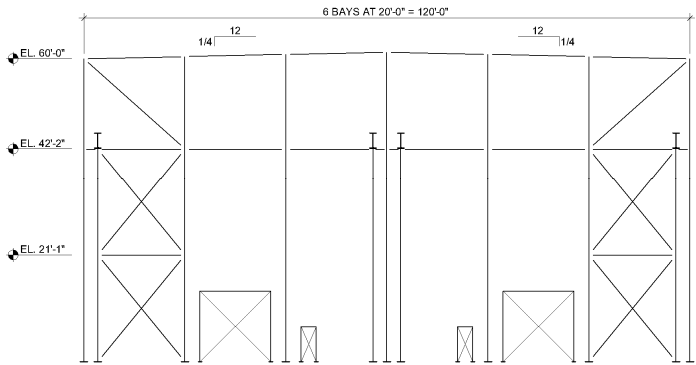
- Sixty Foot Runway Girders
 - Perimeter Girder
 - Interior Girder
- Roof Longitudinal Bracing
- Longitudinal Building Bracing
- Longitudinal Crane Bracing
- **End Wall Bracing**



There's always a solution in steel!

84

End Wall Vertical Bracing



There's always a solution in steel!

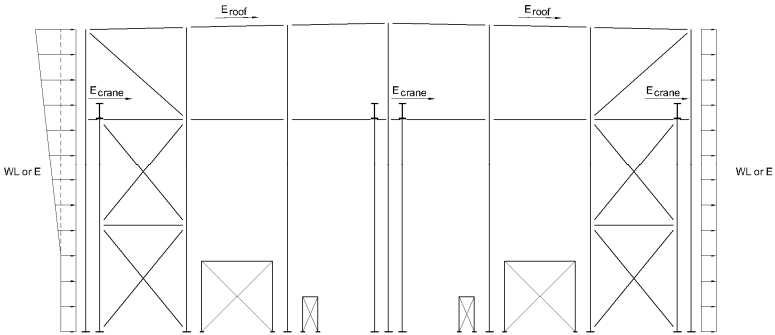
Endwall Considerations

- The maximum tributary width is 30 feet, adjacent to 60 foot bay. Therefore, gravity and wind loads will be identical to typical interior bay.
- Crane lateral seismic forces are resisted by the endwall vertical bracing.



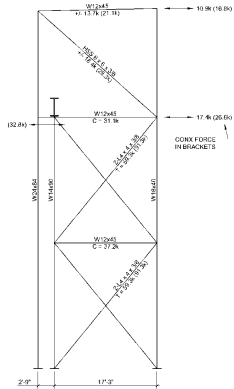
There's always a solution in steel!

Endwall Lateral Loads



There's always a solution in steel!

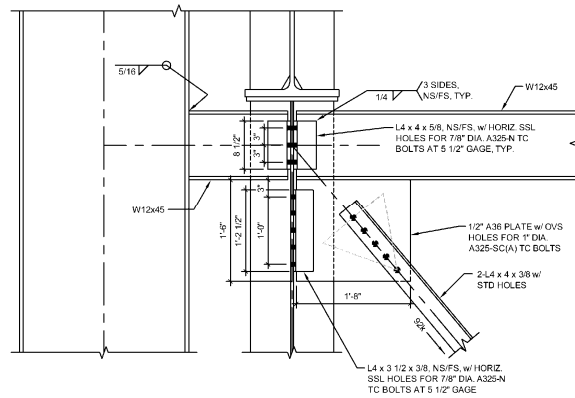
Endwall Forces From 2nd Order Analysis



There's always a solution in steel!



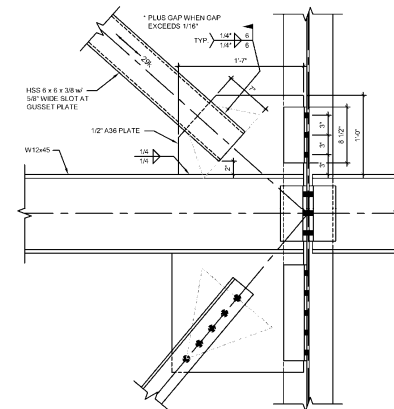
Endwall Brace Connection



There's always a solution in steel!

89

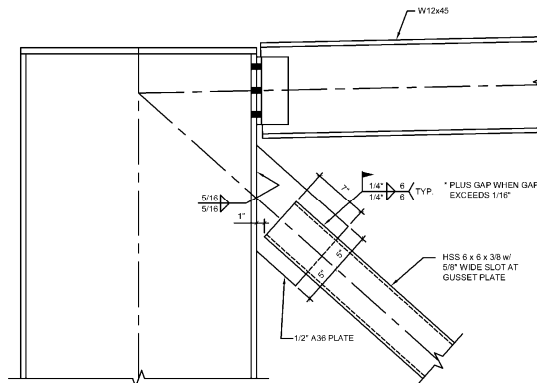
Endwall Brace Connection



There's always a solution in steel!

90

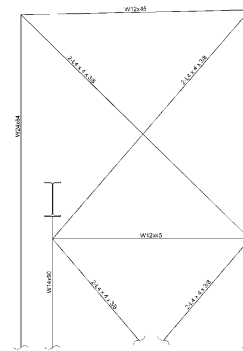
Endwall Brace Connection



There's always a solution in steel!

91

Endwall Brace Alternate



There's always a solution in steel!

92

Lower W12 beam below crane beam to allow for vertical brace connection. Now tension only angle bracing can be used instead of HSS single brace. This results in more cost effective connection design and erection.

End of Session 7



There's always a solution in steel!

93

Individual Webinar Registrants

PDH Certificates

Within 2 business days...

- You will receive an email on how to report attendance from: registration@aisc.org.
- Be on the lookout: Check your spam filter! Check your junk folder!
- Completely fill out online form. Don't forget to check the boxes next to each attendee's name!



There's always a solution in steel!

Individual Webinar Registrants

PDH Certificates

Within 2 business days...

- New reporting site (URL will be provided in the forthcoming email).
- Username: Same as AISC website username.
- Password: Same as AISC website password.



There's always a solution in steel!

8-Session Registrants

PDH Certificates

One certificate will be issued at the conclusion of all 8 sessions.



There's always a solution in steel!

8-Session Registrants

QUIZZES

Access to the quiz: Information for accessing the quiz will be emailed to you by Wednesday. It will contain a link to access the quiz. EMAIL COMES FROM NIGHTSCHOOL@AISC.ORG

Quiz and Attendance records: Posted Tuesday mornings. www.aisc.org/nightschool - scroll down to Quiz and Attendance Records.

Reasons for quiz:

EEU – must take all quizzes and final to receive EEU

PDHS – If you watch a recorded session you must take quiz for PDHS.

REINFORCEMENT – Reinforce what you learned tonight. Get more out of the course.

NOTE: If you attend the live presentation, you do not have to take the quizzes to receive PDHS.



There's always a solution in steel!

8-Session Registrants

RECORDINGS

Access to the recording: Information for accessing the recording will be emailed to you by this Wednesday. The recording will be available for two weeks. For 8-session registrants only. EMAIL COMES FROM NIGHTSCHOOL@AISC.ORG.

PDHS – If you watch a recorded session you must take AND PASS the quiz for PDHS.



There's always a solution in steel!

Night School Resources for 8-session package Registrants

Find all your handouts, quizzes and quiz scores, recording access, and attendance information all in one place!



There's always a solution in steel!

Night School Resources for 8-session package Registrants

Go to www.aisc.org and sign in.



Login

If you're an existing customer, please enter your username and password.

USERNAME

Enter your username

PASSWORD

Enter your password

Remember Me

DON'T HAVE AN ACCOUNT?

My AISC allows you to access Engineering Journal articles and Design Guides you have downloaded from the bookstore.

[REGISTER NOW](#)



Night School Resources for 8-session package Registrants

IN THIS SECTION

- Edit Profile
- My Downloads
- My Pending Quizzes
- My Events
- Order History
- Course History
- Night School Resources

MyAISC

MY PROFILE
 Update your contact and address information.
[EDIT PROFILE](#)

MY PURCHASED DOWNLOADS
 Access articles and documents that you have purchased.

MY ORDER HISTORY
 View your past orders.
[VIEW ORDERS](#)

MY NIGHT SCHOOL RESOURCES
 View online resources for Night School courses, available for 8-Session Package registrants. See www.aisc.org/nightschool for information on Night School including registration.
[VIEW RESOURCES](#)

Night School Resources for 8-session package Registrants

Night School Resources

Event	Date
NS 13 8-Session Package	1/30/2017 7:00:00 PM

There's always a solution in steel!

Night School Resources for 8-session package Registrants

Night School 13: Design of Industrial Buildings

8-SESSION PACKAGE RESOURCES

Event	Date	Handouts	Video	Quiz	Attendance
NS13 - Design Criteria	1/30/2017 7:00:00 PM	Handouts	Video	Pass Score: 80	Pending
NS13 - Economic Considerations	2/6/2017 7:00:00 PM	Handouts	Available 02/08/2017 5pm EST	Available 02/08/2017 5pm EST	Pending
NS13 - Lateral Load Systems and Details	2/13/2017 7:00:00 PM	Handouts	Available 02/15/2017 5pm EST	Available 02/15/2017 5pm EST	Pending
NS13 - Preliminary Design Procedures	2/27/2017 7:00:00 PM	Handouts	Available 03/01/2017 5pm EST	Available 03/01/2017 5pm EST	Pending
NS13 - Crane Girder Design and Frame Analysis	3/6/2017 7:00:00 PM	Handouts	Available 03/08/2017 5pm EST	Available 03/08/2017 5pm EST	Pending
NS13 - Frame Member and Connection Design	3/13/2017 7:00:00 PM	Handouts	Available 03/09/2017 5pm EST	Available 03/15/2017 5pm EST	Pending
NS13 - Transfer Crane Girder & Longitudinal Bldg Bracing Dsn	3/27/2017 7:00:00 PM	Handouts	Available 03/29/2017 5pm EST	Available 03/29/2017 5pm EST	Pending
NS13 - Building Envelope and Bracing Design	4/3/2017 7:00:00 PM	Handouts	Available 04/05/2017 5pm EST	Available 04/05/2017 5pm EST	Pending
NS13 - Final Exam	4/10/2017 7:00:00 PM			Available 04/12/2017 5pm EST	

Night School Resources for 8-session package Registrants

- Weekly “quiz and recording” email.
- Weekly updates of the master Quiz and Attendance record found at www.aisc.org/nightschool. Scroll down to Quiz and Attendance records.
 - Updated on Tuesday mornings.

There's always a solution in steel!

Night School Resources for 8-session package Registrants

- Webinar connection information:
 - Found in your registration confirmation/receipt.
 - Reminder email sent out Monday mornings.
- Link to handouts also found here.



There's always a solution in steel!

Thank You

Please give us your feedback!
Survey at conclusion of webinar.

There's always a solution in steel.

