




**Night School 28:
Vertical Bracing
Connections**

Thank you for joining our live webinar. We will begin shortly. Please standby.





Vertical Bracing Connections, Session 4: Vertical Bracing Corner Connection – Wind and Low-seismic

April 26, 2022 | William A Thornton





**Smarter.
Stronger.
Steel.**



Vertical Bracing Connections, Session 4: Vertical Bracing Corner Connection – Wind and Low-seismic



April 26, 2022 | William A Thornton

Today's live webinar will begin shortly. Please stand by.

Today's audio will be broadcast through the internet. Please be sure to turn up the volume on your speakers.

Please type any questions or comments in the Q&A window.





AIA Credit

AISC is a Registered Provider with The American Institute of Architects Continuing Education Systems (AIA/CES). Credit(s) earned on completion of this program will be reported to AIA/CES for AIA members. Certificates of Completion for both AIA members and non-AIA members are available upon request.

This program has been submitted for AIA/CES for continuing professional education. As such, it does not include content that may be deemed or construed to be an approval or endorsement by the AIA of any material of construction or any method or manner of handling, using, distributing, or dealing in any material or product.

Questions related to specific materials, methods, and services will be addressed at the conclusion of this presentation.





Copyright Materials

This presentation is protected by US and International Copyright laws. Reproduction, distribution, display and use of the presentation without written permission of AISC is prohibited.

© The American Institute of Steel Construction 2022

The information presented herein is based on recognized engineering principles and is for general information only. While it is believed to be accurate, this information should not be applied to any specific application without competent professional examination and verification by a licensed professional engineer. Anyone making use of this information assumes all liability arising from such use.



Course Description

Vertical Bracing Connections

**Vertical Bracing Corner Connection – Wind and Low-seismic
April 26, 2022**

The various steps and methodologies used for bracing connection design will be highlighted as the presenter works through a design example. Practical design tips will be discussed as well as addressing common design challenges.



Learning Objectives

- 1. Determine forces in a corner connection using the Uniform Force Method.
- 2. List the limit states that must be reviewed for the design of bracing connections.
- 3. Describe the bracing connection design process through the presentation of a design example.
- 4. Determine gusset plate dimensions based on the type of corner connection.



**Night School 28: Vertical Bracing
Connections**

Session 4: Vertical Bracing Corner Connection – Wind and Low-seismic

April 26, 2022



William A. Thornton, corporate consultant to Cives Steel



Bracing Connections and Related Topics

By: William Thornton



Course Outline

1. Basic Principles
2. Uniform Force Method Part 1
3. Bracing Connection Details and Prying Action
4. **Vertical Bracing Corner Connection – Wind and Low-seismic**
5. Uniform Force Method Part 2
6. Vertical Bracing Corner Connection – Seismic
7. Chevron Gussets Connection
8. Other Connection Topics and Case Study

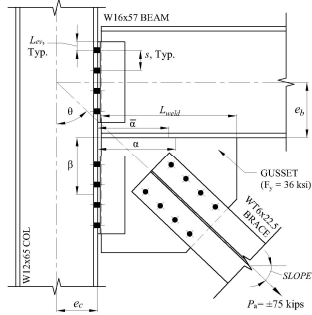


Session Outline

- Example of VB Corner Connection in Wind and Low-Seismic Systems
 - Begin with the brace-to-gusset design
 - Determine gusset dimensions based on brace-to-gusset connection
 - Check gusset-to-column connection
 - Check gusset-to-beam connection
 - Check beam-to-column connection



Example of VB Corner Connection (Part I) in Wind and Low-Seismic



Example of VB Corner Connection (Part I) in Wind and Low-Seismic

Given:

1. AISC 15th Edition, ASD
2. Beam-to-Column and Gusset-to-Column: $n = 4$
3. $L_{weld} = 20$ in. min. (gusset to beam) with $1/4$ " min. weld
4. $3/4$ " dia. ASTM F3125 Gr. A325-N, STD holes, UNO
5. Double L4x4x3/8" Gr. 36 angles, horizontal SSLT with $L_{ev} = 1.25$ in. minimum and bolt spacing, $s = 3$ in.
6. Brace force, $P_a = \pm 75$ kips with slope = 43.6°, $\theta = 46.4^\circ$
7. 3/8" Gusset PL (A36), $F_y = 36$ ksi
8. WT and W Shapes ASTM A992, $F_y = 50$ ksi



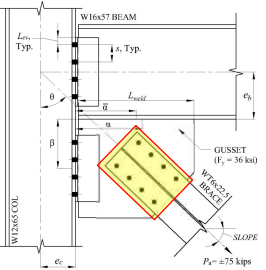
Example VB Corner Connection, I Brace-to-Gusset (cont.)



Example VB Corner Connection, I Brace-to-Gusset (cont.)

The example will begin with designing the brace-to-gusset connection. This will help set the geometry of the gusset.

- a. Determine the number of bolts required to attach the brace to the gusset
- b. Check gross and net tension and block shear for the brace
- c. Check bolt bearing and tearout of brace and gusset
- d. Check block shear and Whitmore tension and buckling for the gusset



Example VB Corner Connection, I Brace-to-Gusset (cont.)

Brace-to-Gusset – Bolt Shear:
 AISC Manual Table 7-1

$$R_n/\Omega = nr_s/\Omega \text{ (single shear)}$$

$$= 8 \times 11.9 \text{ kips/bolt}$$

$$= 95.2 \text{ kips} \geq 75 \text{ kips o.k.}$$

Table 7-1
 Available Shear Strength of Bolts, kips

Member Steel Element, etc.	Nominal Bolt Area, in. ²	F_u		F_y		F_u		F_y	
		0.75	0.60	0.60	0.60	0.60	0.60	0.60	0.60
ASTM A325	0.75	58.0	46.0	58.0	36.0	58.0	36.0	58.0	36.0
ASTM A307	0.75	58.0	46.0	58.0	36.0	58.0	36.0	58.0	36.0
ASTM A490	0.75	58.0	46.0	58.0	36.0	58.0	36.0	58.0	36.0
ASTM A508	0.75	58.0	46.0	58.0	36.0	58.0	36.0	58.0	36.0
ASTM A509	0.75	58.0	46.0	58.0	36.0	58.0	36.0	58.0	36.0
ASTM A570	0.75	58.0	46.0	58.0	36.0	58.0	36.0	58.0	36.0
ASTM A572	0.75	58.0	46.0	58.0	36.0	58.0	36.0	58.0	36.0
ASTM A573	0.75	58.0	46.0	58.0	36.0	58.0	36.0	58.0	36.0
ASTM A578	0.75	58.0	46.0	58.0	36.0	58.0	36.0	58.0	36.0
ASTM A579	0.75	58.0	46.0	58.0	36.0	58.0	36.0	58.0	36.0
ASTM A580	0.75	58.0	46.0	58.0	36.0	58.0	36.0	58.0	36.0
ASTM A588	0.75	58.0	46.0	58.0	36.0	58.0	36.0	58.0	36.0
ASTM A593	0.75	58.0	46.0	58.0	36.0	58.0	36.0	58.0	36.0
ASTM A595	0.75	58.0	46.0	58.0	36.0	58.0	36.0	58.0	36.0
ASTM A598	0.75	58.0	46.0	58.0	36.0	58.0	36.0	58.0	36.0
ASTM A599	0.75	58.0	46.0	58.0	36.0	58.0	36.0	58.0	36.0
ASTM A606	0.75	58.0	46.0	58.0	36.0	58.0	36.0	58.0	36.0
ASTM A607	0.75	58.0	46.0	58.0	36.0	58.0	36.0	58.0	36.0
ASTM A615	0.75	58.0	46.0	58.0	36.0	58.0	36.0	58.0	36.0
ASTM A617	0.75	58.0	46.0	58.0	36.0	58.0	36.0	58.0	36.0
ASTM A618	0.75	58.0	46.0	58.0	36.0	58.0	36.0	58.0	36.0
ASTM A619	0.75	58.0	46.0	58.0	36.0	58.0	36.0	58.0	36.0
ASTM A621	0.75	58.0	46.0	58.0	36.0	58.0	36.0	58.0	36.0
ASTM A622	0.75	58.0	46.0	58.0	36.0	58.0	36.0	58.0	36.0
ASTM A623	0.75	58.0	46.0	58.0	36.0	58.0	36.0	58.0	36.0
ASTM A624	0.75	58.0	46.0	58.0	36.0	58.0	36.0	58.0	36.0
ASTM A625	0.75	58.0	46.0	58.0	36.0	58.0	36.0	58.0	36.0
ASTM A626	0.75	58.0	46.0	58.0	36.0	58.0	36.0	58.0	36.0
ASTM A627	0.75	58.0	46.0	58.0	36.0	58.0	36.0	58.0	36.0
ASTM A628	0.75	58.0	46.0	58.0	36.0	58.0	36.0	58.0	36.0
ASTM A629	0.75	58.0	46.0	58.0	36.0	58.0	36.0	58.0	36.0
ASTM A630	0.75	58.0	46.0	58.0	36.0	58.0	36.0	58.0	36.0
ASTM A631	0.75	58.0	46.0	58.0	36.0	58.0	36.0	58.0	36.0
ASTM A632	0.75	58.0	46.0	58.0	36.0	58.0	36.0	58.0	36.0
ASTM A633	0.75	58.0	46.0	58.0	36.0	58.0	36.0	58.0	36.0
ASTM A634	0.75	58.0	46.0	58.0	36.0	58.0	36.0	58.0	36.0
ASTM A635	0.75	58.0	46.0	58.0	36.0	58.0	36.0	58.0	36.0
ASTM A636	0.75	58.0	46.0	58.0	36.0	58.0	36.0	58.0	36.0
ASTM A637	0.75	58.0	46.0	58.0	36.0	58.0	36.0	58.0	36.0
ASTM A638	0.75	58.0	46.0	58.0	36.0	58.0	36.0	58.0	36.0
ASTM A639	0.75	58.0	46.0	58.0	36.0	58.0	36.0	58.0	36.0
ASTM A640	0.75	58.0	46.0	58.0	36.0	58.0	36.0	58.0	36.0
ASTM A641	0.75	58.0	46.0	58.0	36.0	58.0	36.0	58.0	36.0
ASTM A642	0.75	58.0	46.0	58.0	36.0	58.0	36.0	58.0	36.0
ASTM A643	0.75	58.0	46.0	58.0	36.0	58.0	36.0	58.0	36.0
ASTM A644	0.75	58.0	46.0	58.0	36.0	58.0	36.0	58.0	36.0
ASTM A645	0.75	58.0	46.0	58.0	36.0	58.0	36.0	58.0	36.0
ASTM A646	0.75	58.0	46.0	58.0	36.0	58.0	36.0	58.0	36.0
ASTM A647	0.75	58.0	46.0	58.0	36.0	58.0	36.0	58.0	36.0
ASTM A648	0.75	58.0	46.0	58.0	36.0	58.0	36.0	58.0	36.0
ASTM A649	0.75	58.0	46.0	58.0	36.0	58.0	36.0	58.0	36.0
ASTM A650	0.75	58.0	46.0	58.0	36.0	58.0	36.0	58.0	36.0
ASTM A651	0.75	58.0	46.0	58.0	36.0	58.0	36.0	58.0	36.0
ASTM A652	0.75	58.0	46.0	58.0	36.0	58.0	36.0	58.0	36.0
ASTM A653	0.75	58.0	46.0	58.0	36.0	58.0	36.0	58.0	36.0
ASTM A654	0.75	58.0	46.0	58.0	36.0	58.0	36.0	58.0	36.0
ASTM A655	0.75	58.0	46.0	58.0	36.0	58.0	36.0	58.0	36.0
ASTM A656	0.75	58.0	46.0	58.0	36.0	58.0	36.0	58.0	36.0
ASTM A657	0.75	58.0	46.0	58.0	36.0	58.0	36.0	58.0	36.0
ASTM A658	0.75	58.0	46.0	58.0	36.0	58.0	36.0	58.0	36.0
ASTM A659	0.75	58.0	46.0	58.0	36.0	58.0	36.0	58.0	36.0
ASTM A660	0.75	58.0	46.0	58.0	36.0	58.0	36.0	58.0	36.0
ASTM A661	0.75	58.0	46.0	58.0	36.0	58.0	36.0	58.0	36.0
ASTM A662	0.75	58.0	46.0	58.0	36.0	58.0	36.0	58.0	36.0
ASTM A663	0.75	58.0	46.0	58.0	36.0	58.0	36.0	58.0	36.0
ASTM A664	0.75	58.0	46.0	58.0	36.0	58.0	36.0	58.0	36.0
ASTM A665	0.75	58.0	46.0	58.0	36.0	58.0	36.0	58.0	36.0
ASTM A666	0.75	58.0	46.0	58.0	36.0	58.0	36.0	58.0	36.0
ASTM A667	0.75	58.0	46.0	58.0	36.0	58.0	36.0	58.0	36.0
ASTM A668	0.75	58.0	46.0	58.0	36.0	58.0	36.0	58.0	36.0
ASTM A669	0.75	58.0	46.0	58.0	36.0	58.0	36.0	58.0	36.0
ASTM A670	0.75	58.0	46.0	58.0	36.0	58.0	36.0	58.0	36.0
ASTM A671	0.75	58.0	46.0	58.0	36.0	58.0	36.0	58.0	36.0
ASTM A672	0.75	58.0	46.0	58.0	36.0	58.0	36.0	58.0	36.0
ASTM A673	0.75	58.0	46.0	58.0	36.0	58.0	36.0	58.0	36.0
ASTM A674	0.75	58.0	46.0	58.0	36.0	58.0	36.0	58.0	36.0
ASTM A675	0.75	58.0	46.0	58.0	36.0	58.0	36.0	58.0	36.0
ASTM A676	0.75	58.0	46.0	58.0	36.0	58.0	36.0	58.0	36.0
ASTM A677	0.75	58.0	46.0	58.0	36.0	58.0	36.0	58.0	36.0
ASTM A678	0.75	58.0	46.0	58.0	36.0	58.0	36.0	58.0	36.0
ASTM A679	0.75	58.0	46.0	58.0	36.0	58.0	36.0	58.0	36.0
ASTM A680	0.75	58.0	46.0	58.0	36.0	58.0	36.0	58.0	36.0
ASTM A681	0.75	58.0	46.0	58.0	36.0	58.0	36.0	58.0	36.0
ASTM A682	0.75	58.0	46.0	58.0	36.0	58.0	36.0	58.0	36.0
ASTM A683	0.75	58.0	46.0	58.0	36.0	58.0	36.0	58.0	36.0
ASTM A684	0.75	58.0	46.0	58.0	36.0	58.0	36.0	58.0	36.0
ASTM A685	0.75	58.0	46.0	58.0	36.0	58.0	36.0	58.0	36.0
ASTM A686	0.75	58.0	46.0	58.0	36.0	58.0	36.0	58.0	36.0
ASTM A687	0.75	58.0	46.0	58.0	36.0	58.0	36.0	58.0	36.0
ASTM A688	0.75	58.0	46.0	58.0	36.0	58.0	36.0	58.0	36.0
ASTM A689	0.75	58.0	46.0	58.0	36.0	58.0	36.0	58.0	36.0
ASTM A690	0.75	58.0	46.0	58.0	36.0	58.0	36.0	58.0	36.0
ASTM A691	0.75	58.0	46.0	58.0	36.0	58.0	36.0	58.0	36.0
ASTM A692	0.75	58.0	46.0	58.0	36.0	58.0	36.0	58.0	36.0
ASTM A693	0.75	58.0	46.0	58.0	36.0	58.0	36.0	58.0	36.0
ASTM A694	0.75	58.0	46.0	58.0	36.0	58.0	36.0	58.0	36.0
ASTM A695	0.75	58.0	46.0	58.0	36.0	58.0	36.0	58.0	36.0
ASTM A696	0.75	58.0	46.0	58.0	36.0	58.0	36.0	58.0	36.0</

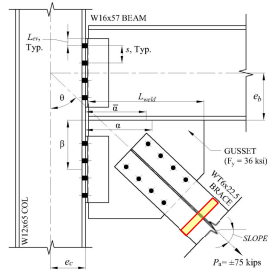
Example VB Corner Connection, I Brace-to-Gusset (cont.)

Brace-to-Gusset – WT Gross Tension:
 AISC Specification Eq. J4-1

$$\frac{R_n}{\Omega} = \frac{F_u A_g}{\Omega}$$

$$= \frac{(50 \text{ ksi})(6.56 \text{ in.}^2)}{1.67}$$

$$= 196 \text{ kips} > 75 \text{ kips o.k.}$$



Net Tension

- The determination of the net section strength must account for
 - the area reduction due to the holes
 - shear lag effects
- The width of the holes is ($d_b + 1/16$ in.) for standard holes and bolts less than 1.0 in. in diameter. For bolts ≥ 1.0 in dia., width of hole is ($d_b + 1/8$ in.) – Spec. section J3.2
- The shear lag factor, U , is computed using Table D3.1.



Case	Description of Element	Shear Lag Factor, U	Example
1	All tension members when the tension load is transferred directly to each of the cross-sectional elements.	$U = 1.0$	
2	All tension members, except HSS, when the tension load is transferred to one or all of the cross-sectional elements by bolting or by longitudinal welds to connections with tension members. Alternatively, Case 7 is governed by W, M, S, and HP shapes. (For angles, Case 8 is permitted to be used.)	$U = 1 - \frac{x}{l}$	
3	All tension members when the tension load is transferred only by tension welds to one or all of the cross-sectional elements.	$U = 1.0$	
4	Plates, angles, channels with wide flanges, and W shapes with connected elements, when the tension load is transferred by longitudinal welds only. See Case 2 for definition of x .	$U = 1.0$	
5	Round HSS with a single concentric gusset plate through slots in the HSS.	$U = 1.0$	
6	Rectangular HSS with a single concentric gusset plate	$U = 1 - \frac{x}{l}$	
	with two gusset plates	$U = 1 - \frac{x}{l}$	
7	W, M, S, or HP with flange connected with slotted, or two end flange or more fasteners per flange (see Case 2), but in the direction of loading	$U = 0.90$	
	with web connected with two or more fasteners per flange in the direction of loading	$U = 0.70$	
	with flange or more fasteners per flange	$U = 0.80$	
8	Single and double angles with two fasteners per leg in the direction of loading with larger value	$U = 0.80$	
	with larger value leg is connected to the gusset plate	$U = 0.80$	



Case	Description of Element	Shear Lag Factor, U	Example
1	All tension members when the tension load is transferred directly to each of the cross-sectional elements.	$U = 1.0$	
2	All tension members, except HSS, when the tension load is transferred to one or all of the cross-sectional elements by bolting or by longitudinal welds to connections with tension members. Alternatively, Case 7 is governed by W, M, S, and HP shapes. (For angles, Case 8 is permitted to be used.)	$U = 1 - \frac{x}{l}$	
3	All tension members when the tension load is transferred only by tension welds to one or all of the cross-sectional elements.	$U = 1.0$	
4	Plates, angles, channels with wide flanges, and W shapes with connected elements, when the tension load is transferred by longitudinal welds only. See Case 2 for definition of x .	$U = 1.0$	
5	Round HSS with a single concentric gusset plate through slots in the HSS.	$U = 1.0$	
6	Rectangular HSS with a single concentric gusset plate	$U = 1 - \frac{x}{l}$	
	with two gusset plates	$U = 1 - \frac{x}{l}$	
7	W, M, S, or HP with flange connected with slotted, or two end flange or more fasteners per flange (see Case 2), but in the direction of loading	$U = 0.90$	
	with web connected with two or more fasteners per flange in the direction of loading	$U = 0.70$	
	with flange or more fasteners per flange	$U = 0.80$	
8	Single and double angles with two fasteners per leg in the direction of loading with larger value	$U = 0.80$	
	with larger value leg is connected to the gusset plate	$U = 0.80$	

$$U = 1 - \frac{x}{l}$$



Net Tension Determination of \bar{x}

Treat as a WT

21

Example VB Corner Connection, I Brace-to-Gusset (cont.)

Brace-to-Gusset – WT Net Tension:
 AISC Specification Eq. J4-2
 $\bar{x} = 1.13 \text{ in.}$
 $l = s(n - 1) = (3 \text{ in.})(4 - 1) = 9 \text{ in.}$
 $U = 1 - \bar{x}/l = 1 - (1.13 \text{ in.}/9 \text{ in.}) = 0.874$

To simplify calculations:
 For $\frac{3}{4}$ in. dia. bolts with STD holes,
 $d_h = \frac{13}{16} \text{ in.}$ and
 $(d_h + \frac{1}{16} \text{ in.}) = (\frac{13}{16} \text{ in.} + \frac{1}{16} \text{ in.}) = \frac{7}{8} \text{ in.}$

22

Example VB Corner Connection, I Brace-to-Gusset (cont.)

Brace-to-Gusset – WT Net Tension (cont.):

$$A_e = U[A_g - t_f(\# \text{ lines})(d_h + \frac{1}{16} \text{ in.})]$$

$$= 0.874 [6.56 \text{ in.}^2 - (0.575 \text{ in.})(2)(\frac{7}{8} \text{ in.})]$$

$$= 4.85 \text{ in.}^2$$

$$\frac{R_n}{\Omega} = \frac{F_u A_e}{\Omega}$$

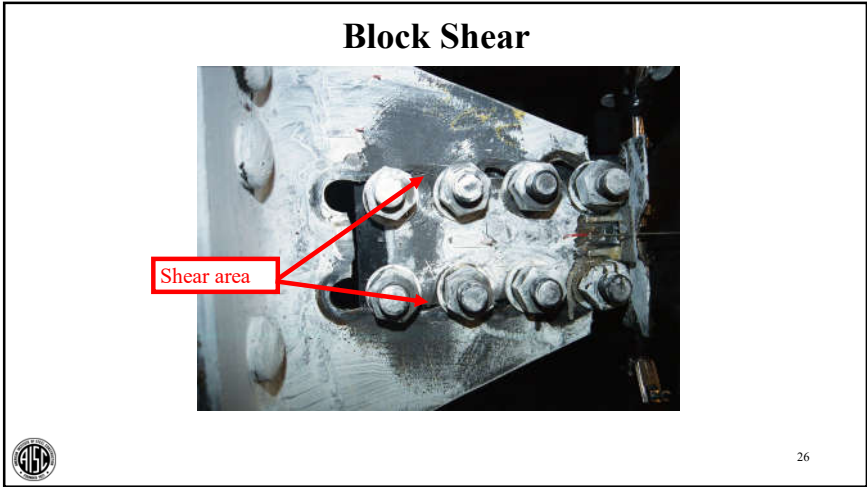
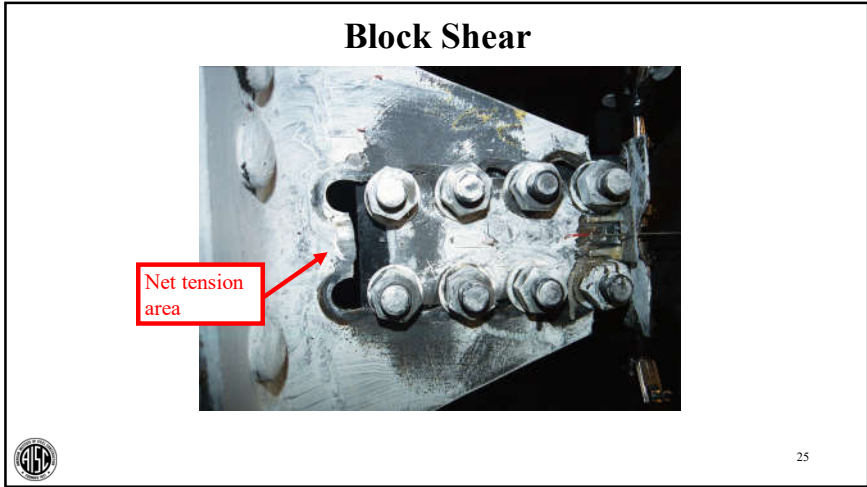
$$= \frac{(65 \text{ ksi})(4.85 \text{ in.}^2)}{2}$$

$$= 158 \text{ kips} > 75 \text{ kips o.k.}$$

23

Block Shear

24



Example VB Corner Connection, I Brace-to-Gusset (cont.)

Brace-to-Gusset – Block Shear WT:
 AISC Spec Section J4.3 Block Shear Strength
 $\Omega = 2.00$
 $R_n = 0.6F_u A_{nv} + U_{bs} F_u A_{nt}$
 $\leq 0.6F_y A_{gv} + U_{bs} F_u A_{nt}$

Shear Rupture = $0.6F_u A_{nv}$
 Shear Yield = $0.6F_y A_{gv}$
 Tension Rupture = $F_u A_{nt}$

$U_{bs} = 1.0$ for Direct Loaded Connections

27

Example VB Corner Connection, I Brace-to-Gusset (cont.)

Brace-to-Gusset – Block Shear WT (cont.):

$$L_{gv} = L_{ev} + s(n - 1)$$

$$= 1.5 \text{ in.} + (3 \text{ in.})(4 - 1) = 10.5 \text{ in.}$$

$$L_{nv} = L_{ev} + s(n - 1) - (n - 0.5)(d_h + 1/16 \text{ in.})$$

$$= 1.5 \text{ in.} + (3 \text{ in.})(4 - 1)$$

$$\quad - (4 - 0.5)(7/8 \text{ in.})$$

$$= 7.44 \text{ in.}$$

$$L_{nt} = (b_f - \text{gage})/2 - (d_h + 1/16 \text{ in.})/2$$

$$= (8.05 \text{ in.} - 5.5 \text{ in.})/2 - (7/8 \text{ in.})/2$$

$$= 0.838 \text{ in.}$$

28

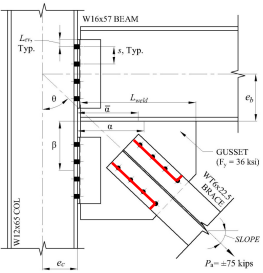
Example VB Corner Connection, I Brace-to-Gusset (cont.)

Brace-to-Gusset – Block Shear WT (cont.):

$$A_{gv} = 2L_{gv}t_f = 2(10.5 \text{ in.})(0.575 \text{ in.}) = 12.08 \text{ in.}^2$$

$$A_{nt} = 2L_{nt}t_f = 2(7.44 \text{ in.})(0.575 \text{ in.}) = 8.56 \text{ in.}^2$$

$$A_{nt} = 2L_{nt}t_f = 2(0.838 \text{ in.})(0.575 \text{ in.}) = 0.96 \text{ in.}^2$$



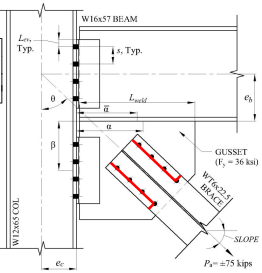
Example VB Corner Connection, I Brace-to-Gusset (cont.)

Brace-to-Gusset – Block Shear WT (cont.):

$$R_n = \min \left[\begin{aligned} &0.6(65 \text{ ksi})(8.56 \text{ in.}^2) = 333.84 \text{ kips} \\ &0.6(50 \text{ ksi})(12.08 \text{ in.}^2) = 362.40 \text{ kips} \\ &\quad + [1(65 \text{ ksi})(0.96 \text{ in.}^2)] \end{aligned} \right]$$

$$= 333.84 \text{ kips} + 62.4 \text{ kips} = 396.24 \text{ kips}$$

$$R_n/\Omega = (396.24 \text{ kips})/2 = 198 \text{ kips} > 75 \text{ kips o.k.}$$

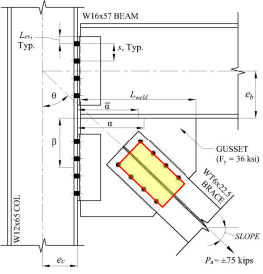


Example VB Corner Connection, I Brace-to-Gusset (cont.)

Brace-to-Gusset – Block Shear Gusset:

These calculations are similar to the block shear check for the WT that was previously shown.

The actual calculations will be contained in Appendix 1 which is available with the handouts for this session.



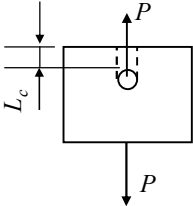
Bolt Tearout

Bolt Bearing



Bolt Bearing and Tearout

Bolt Tearout is easier to understand if you think about a bolt tearing through the material as shown.



There are 2 shear planes; the strength is therefore:

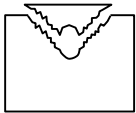
$$(2)(0.6)(F_u)(L_c)(t)$$

or, $1.2(F_u)(L_c)(t)$



Bolt Bearing and Tearout

In reality, the material will fail as shown, but test results support the equation in the *Specification*.



Bolt Bearing and Tearout

- For each bolt there are five (5) possible limit states or failure modes that need to be checked
 - Bolt Shear
 - Bolt Bearing on the Main Material
 - Bolt Bearing on the Connection Material
 - Bolt Tearout on the Main Material
 - Bolt Tearout on the Connection Material
- Then the sum of the bolt capacities can be added.



Example VB Corner Connection, I Brace-to-Gusset (cont.)

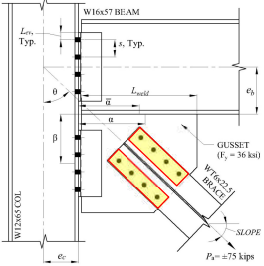
Brace-to-Gusset – Bolt Bearing/Tearout:

$$R_n = 2.4dF_u \quad \text{AISC Specification Eq. J3-6a}$$

$$R_n = 1.2l_tF_u \quad \text{AISC Specification Eq. J3-6c}$$

AISC Bolt Shear:
 $r_v/\Omega = 11.9$ kips

WT Bolt Bearing:
 $R_{brg(WT)}/\Omega = 2.4d_bF_u/\Omega$
 $= 2.4(0.75 \text{ in.})(0.575 \text{ in.})(65 \text{ ksi})/2$
 $= 33.6$ kips

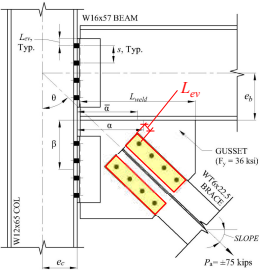


Example VB Corner Connection, I Brace-to-Gusset (cont.)

Brace-to-Gusset – Bolt Bearing (cont.):

WT Bolt Tear Out (Edge):
 $R_{tear(WT_E)}/\Omega = 1.2[L_{ev} - (d_{h_w}/2)]t_p F_u/\Omega$
 $= 1.2[1.5 \text{ in.} - (1^{3/16} \text{ in.})/2]$
 $\times (0.575 \text{ in.})(65 \text{ ksi})/2$
 $= 24.5 \text{ kips}$

WT Bolt Tear Out (Center):
 $R_{tear(WT_C)}/\Omega = 1.2(s - d_{h_w})t_p F_u/\Omega$
 $= 1.2(3 \text{ in.} - 1^{3/16} \text{ in.})(0.575 \text{ in.})$
 $\times (65 \text{ ksi})/2$
 $= 49.1 \text{ kips}$

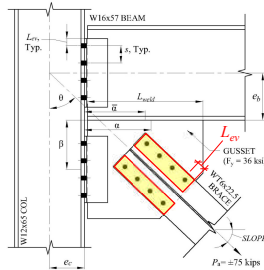


Example VB Corner Connection, I Brace-to-Gusset (cont.)

Brace-to-Gusset – Bolt Bearing (cont.):

Plate Bolt Bearing:
 $R_{brg(PL)}/\Omega = 2.4d_b t_p F_u/\Omega$
 $= 2.4(0.75 \text{ in.})(0.375 \text{ in.})(58 \text{ ksi})/2$
 $= 19.6 \text{ kips}$

Plate Bolt Tear Out (Edge):
 $R_{tear(PL_E)}/\Omega = 1.2[L_{ev} - (d_{h_w}/2)]t_p F_u/\Omega$
 $= 1.2[1.5 \text{ in.} - (1^{3/16} \text{ in.})/2]$
 $\times (0.375 \text{ in.})(58 \text{ ksi})/2$
 $= 14.3 \text{ kips}$

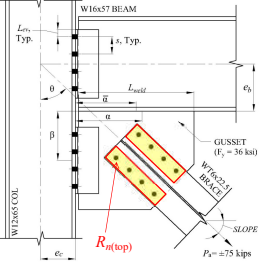


Example VB Corner Connection, I Brace-to-Gusset (cont.)

Brace-to-Gusset – Bolt Bearing (cont.):

Plate Bolt Tear Out (Center):
 $R_{tear(PL_C)}/\Omega = 1.2(s - d_{h_w})t_p F_u/\Omega$
 $= 1.2(3 \text{ in.} - 1^{3/16} \text{ in.})(0.375 \text{ in.})$
 $\times (58 \text{ ksi})/2$
 $= 28.6 \text{ kips}$

$R_{n(top)}/\Omega = \min\{r_v/\Omega, R_{brg(WT)}/\Omega, R_{tear(WT_E)}/\Omega,$
 $R_{brg(PL)}/\Omega, R_{tear(PL_C)}/\Omega\}$
 $= \min\{11.9 \text{ kips}, 33.6 \text{ kips}, 24.5 \text{ kips},$
 $19.6 \text{ kips}, 28.6 \text{ kips}\}$
 $= 11.9 \text{ kips}$

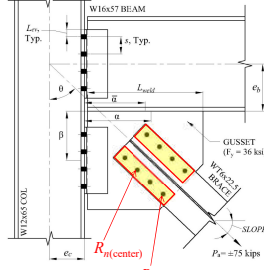


Example VB Corner Connection, I Brace-to-Gusset (cont.)

Brace-to-Gusset – Bolt Bearing (cont.):

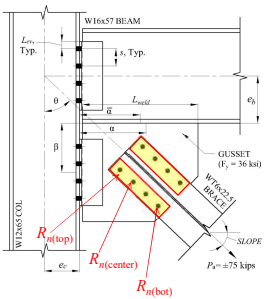
$R_{n(center)}/\Omega = \min\{r_v/\Omega, R_{brg(WT)}/\Omega, R_{tear(WT_C)}/\Omega,$
 $R_{brg(PL)}/\Omega, R_{tear(PL_C)}/\Omega\}$
 $= \min\{11.9 \text{ kips}, 33.6 \text{ kips}, 49.1 \text{ kips},$
 $19.6 \text{ kips}, 28.6 \text{ kips}\}$
 $= 11.9 \text{ kips}$

$R_{n(bot)}/\Omega = \min\{r_v/\Omega, R_{brg(WT)}/\Omega, R_{tear(WT_E)}/\Omega,$
 $R_{brg(PL)}/\Omega, R_{tear(PL_E)}/\Omega\}$
 $= \min\{11.9 \text{ kips}, 33.6 \text{ kips}, 49.1 \text{ kips},$
 $19.6 \text{ kips}, 14.3 \text{ kips}\}$
 $= 11.9 \text{ kips}$



Example VB Corner Connection, I Brace-to-Gusset (cont.)

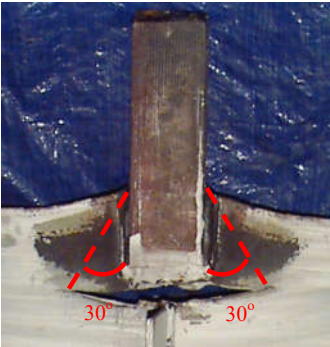
Brace-to-Gusset – Bolt Bearing (cont.):
Total Bolt Strength
 $R_w/\Omega = [R_n(\text{top})/\Omega + (R_n(\text{center})/\Omega)(n-2) + R_n(\text{bot})/\Omega](2 \text{ lines})$
 $= [11.9 \text{ kips} + (11.9 \text{ kips})(4-2) + 11.9 \text{ kips}](2)$
 $= 95.2 \text{ kips} > 75 \text{ kips o.k.}$



Whitmore Section



Whitmore Section



Example VB Corner Connection, I Brace-to-Gusset (cont.)

Brace-to-Gusset – Whitmore Section of Gusset Plate:
 Whitmore Compression will control over Whitmore Tension by inspection.
 $l_{unbraced} = 8.81 \text{ in. max}$

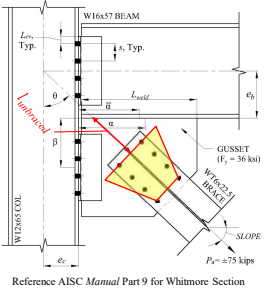
$$l_w = 2(l_{comp})\tan 30^\circ + \text{gage}$$

$$= 2(9 \text{ in.})\tan 30^\circ + 5.5 \text{ in. min.}$$

$$= 15.9 \text{ in.}$$

$$l_{w(\text{beam})} = \text{length of Whitmore in beam}$$

$$= 0 \text{ in. from geometric layout}$$



Example VB Corner Connection, I Brace-to-Gusset (cont.)

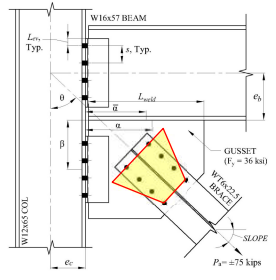
Brace-to-Gusset – Whitmore Section of Gusset Plate (cont.):

$$l_{w(gusset)} = l_w - l_{w(beam)} = 15.9 \text{ in.} - 0 \text{ in.} = 15.9 \text{ in.}$$

$K = 0.5$ from AISC's *Design Guide 29* - Chapter 5 Design Examples

$$Kl_{unbraced}/r = [0.5(8.81 \text{ in.})\sqrt{(12)}]/0.375 \text{ in.} = 40.7$$

AISC Manual Table 4-14, $F_{cr(Gr.36)}/\Omega = 19.7 \text{ ksi}$
 AISC Manual Table 4-14, $F_{cr(Gr.50)}/\Omega = 26.5 \text{ ksi}$



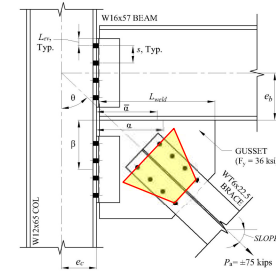
Example VB Corner Connection, I Brace-to-Gusset (cont.)

Brace-to-Gusset – Whitmore Section of Gusset Plate (cont.):

Table 4-14 (continued)
 Available Critical Stress for Compression Members

F _y - ksi	F _y = 36 ksi		F _y = 50 ksi		F _y = 60 ksi		F _y = 70 ksi		F _y = 80 ksi	
	F _{cr} /Ω	F _{cr} /φ	F _{cr} /Ω	F _{cr} /φ	F _{cr} /Ω	F _{cr} /φ	F _{cr} /Ω	F _{cr} /φ	F _{cr} /Ω	F _{cr} /φ
7	19.7	26.5	19.7	26.5	19.7	26.5	19.7	26.5	19.7	26.5
10	19.7	26.5	19.7	26.5	19.7	26.5	19.7	26.5	19.7	26.5
15	19.7	26.5	19.7	26.5	19.7	26.5	19.7	26.5	19.7	26.5
20	19.7	26.5	19.7	26.5	19.7	26.5	19.7	26.5	19.7	26.5
25	19.7	26.5	19.7	26.5	19.7	26.5	19.7	26.5	19.7	26.5
30	19.7	26.5	19.7	26.5	19.7	26.5	19.7	26.5	19.7	26.5
35	19.7	26.5	19.7	26.5	19.7	26.5	19.7	26.5	19.7	26.5
40	19.7	26.5	19.7	26.5	19.7	26.5	19.7	26.5	19.7	26.5
45	19.7	26.5	19.7	26.5	19.7	26.5	19.7	26.5	19.7	26.5
50	19.7	26.5	19.7	26.5	19.7	26.5	19.7	26.5	19.7	26.5
55	19.7	26.5	19.7	26.5	19.7	26.5	19.7	26.5	19.7	26.5
60	19.7	26.5	19.7	26.5	19.7	26.5	19.7	26.5	19.7	26.5
65	19.7	26.5	19.7	26.5	19.7	26.5	19.7	26.5	19.7	26.5
70	19.7	26.5	19.7	26.5	19.7	26.5	19.7	26.5	19.7	26.5
75	19.7	26.5	19.7	26.5	19.7	26.5	19.7	26.5	19.7	26.5
80	19.7	26.5	19.7	26.5	19.7	26.5	19.7	26.5	19.7	26.5
85	19.7	26.5	19.7	26.5	19.7	26.5	19.7	26.5	19.7	26.5
90	19.7	26.5	19.7	26.5	19.7	26.5	19.7	26.5	19.7	26.5
95	19.7	26.5	19.7	26.5	19.7	26.5	19.7	26.5	19.7	26.5
100	19.7	26.5	19.7	26.5	19.7	26.5	19.7	26.5	19.7	26.5

From AISC *Design Guide 29*: The effective length factor K has been established as 0.5 by full scale tests on bracing connections (Gross, 1990). It assumes that the gusset plate is supported on both connected edges. (Alternately, see: Dowswell, Bo (2006), "Effective Length Factors for Gusset Plate Buckling," AISC *Engineering Journal*, 2nd Qtr.)



Example VB Corner Connection, I Brace-to-Gusset (cont.)

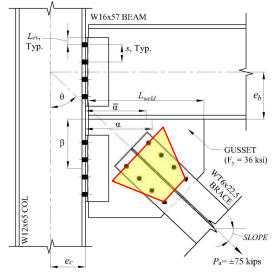
Brace-to-Gusset – Whitmore Section of Gusset Plate (cont.):

$$\frac{P_u}{\Omega_c} = \frac{F_{cr(gusset)}}{\Omega_c} A_{w(gusset)} + \frac{F_{cr(beam)}}{\Omega_c} A_{w(beam)}$$

$$= (19.7 \text{ ksi})(0.375 \text{ in.})(15.9 \text{ in.}) + 0$$

$$= 83 \text{ kips} \geq 75 \text{ kips o.k.}$$

Note: for Whitmore tension, use F_t/Ω in lieu of F_c/Ω

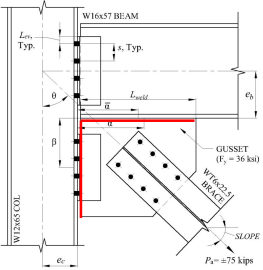


Example VB Corner Connection, I Gusset Forces

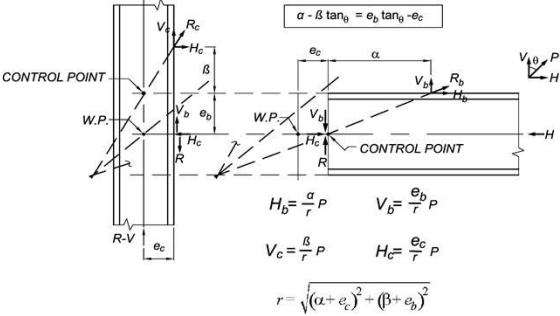


Example VB Corner Connection, I Gusset Forces

Next, the gusset forces, V_b , H_b , M_b , V_c , H_c , and M_c , will be determined using the Uniform Force Method.



Geometry of UFM All Parts are in Equilibrium



Example VB Corner Connection, I Gusset Forces (cont.)

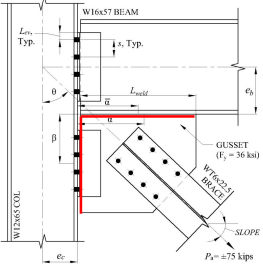
Determine Gusset Forces using UFM:

$\tan \theta = 1.05$

$e_b = d_g/2 = (16.4 \text{ in.})/2 = 8.2 \text{ in.}$

$e_c = d_c/2 = (12.1 \text{ in.})/2 = 6.05 \text{ in.}$

(note: $e_c = 0.0 \text{ in.}$ for connections into column web, except Special Case IV)



Example VB Corner Connection, I Gusset Forces (cont.)

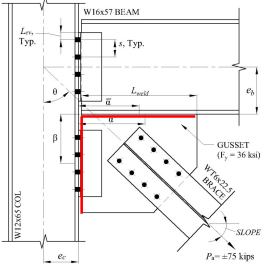
$\beta =$ distance to center of gusset-to-column connections

From geometric layout, $H_{gusset} = 16.875 \text{ in.}$
 Place bolts in approximate center of gusset,

$\beta = 8.5 \text{ in.}$

Let $\bar{\beta} = \beta$

$$\begin{aligned} \alpha &= e_b \tan \theta - e_c + \bar{\beta} \tan \theta \\ &= (8.2 \text{ in.} \times 1.05) - 6.05 \text{ in.} \\ &\quad + (8.5 \text{ in.} \times 1.05) \\ &= 11.5 \text{ in.} \end{aligned}$$



Example VB Corner Connection, I Gusset Forces (cont.)

Determine Gusset Forces using UFM (cont.):

$$\alpha = \frac{L_{\text{weld}}}{2} + 0.5 \text{ in. (setback for angles)}$$

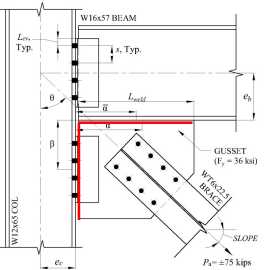
$$= \frac{20 \text{ in.}}{2} + 0.5 \text{ in.}$$

$$= 10.5 \text{ in. min.} \rightarrow \text{does not equal } \alpha$$

$$r = \sqrt{(\alpha + e_c)^2 + (\beta + e_b)^2}$$

$$= \sqrt{(11.5 \text{ in.} + 6.05 \text{ in.})^2 + (8.5 \text{ in.} + 8.2 \text{ in.})^2}$$

$$= 24.2 \text{ in.}$$



Example VB Corner Connection, I Gusset Forces (cont.)

Determine Gusset Forces using UFM (cont.):

$$V_b = P_a (e_b/r)$$

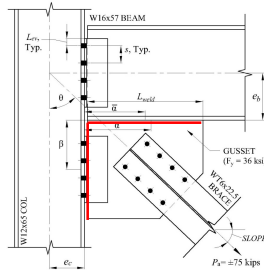
$$= (75 \text{ kips})(8.2 \text{ in.}/24.2 \text{ in.})$$

$$= 25.4 \text{ kips}$$

$$H_b = P_a (\alpha/r)$$

$$= (75 \text{ kips})(11.5 \text{ in.}/24.2 \text{ in.})$$

$$= 35.6 \text{ kips}$$



Example VB Corner Connection, I Gusset Forces (cont.)

$$M_b = V_b (\alpha - \bar{\alpha})$$

$$= 25.4 \text{ kips}(11.5 \text{ in.} - 10.5 \text{ in.})$$

$$= 2.54 \text{ kip-in.}$$

$$V_c = P_a (\beta/r)$$

$$= 75 \text{ kips}(8.5 \text{ in.}/24.2 \text{ in.})$$

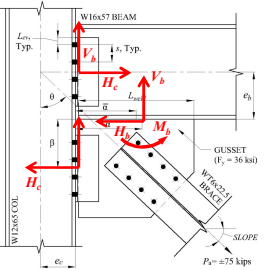
$$= 26.3 \text{ kips}$$

$$H_c = P_a (e_c/r)$$

$$= 75 \text{ kips}(6.05 \text{ in.}/24.2 \text{ in.})$$

$$= 18.8 \text{ kips}$$

$$M_c = 0 \text{ since } \bar{\beta} = \beta$$



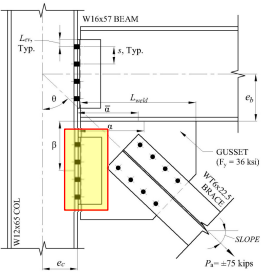
Example VB Corner Connection, I Gusset-to-Column



Example VB Corner Connection, I Gusset-to-Column

The gusset-to-column will be designed using the gusset forces previously determined.

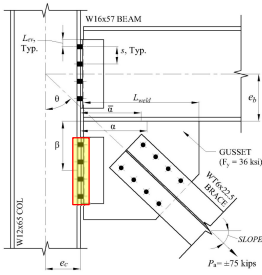
- a. Check bolts at column flange
- b. Check prying of angles and column flange
- c. Check bolt bearing and tearout of angles and column flange
- d. Check gross and net shear and block shear for angles
- e. Check angle welds



Example VB Corner Connection, I Gusset-to-Column (cont.)

Gusset-to-Column – Bolts:
 $R_b/\Omega = 2n(r_v/\Omega)$
 $= 2(4)(11.9 \text{ kips})$
 $= 95.2 \text{ kips} > V_c = 26.3 \text{ kips o.k.}$

Check Shear and Tension:
 $V_{bolt} = V_c/(2n) = 26.3 \text{ kips}/[(2)(4)]$
 $= 3.29 \text{ kips}$
 $T_{bolt} = H_c/(2n) = 18.8 \text{ kips}/[(2)(4)]$
 $= 2.35 \text{ kips}$



Example VB Corner Connection, I Gusset-to-Column (cont.)

Gusset-to-Column – Bolts (cont.):
 Check Shear and Tension (cont.):

$$A_b = \frac{\pi d_b^2}{4}$$

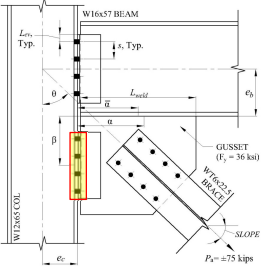
$$= \frac{3.14(0.75 \text{ in.})^2}{4}$$

$$= 0.442 \text{ in.}^2$$

$$f_{rv} = V_{bolt}/A_b$$

$$= 3.29 \text{ kips}/0.442 \text{ in.}^2$$

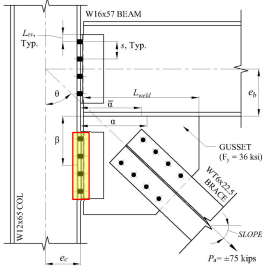
$$= 7.44 \text{ ksi}$$



Example VB Corner Connection, I Gusset-to-Column (cont.)

Gusset-to-Column – Bolts (cont.):
 Check Shear and Tension (cont.):
 $F_{nt} = 1.3F_{nt} - \Omega F_{nv} r_v / F_{nv} \leq F_{nt}$ (Spec J3-3b)
 $= 1.3(90 \text{ ksi}) - 2(90 \text{ ksi})(7.44 \text{ ksi})/(54 \text{ ksi})$
 $= 92.2 \text{ ksi} > 90 \text{ ksi, use } 90 \text{ ksi}$

AISC Specification TABLE J3.2 Nominal Strength of Fasteners and Threaded Parts, ksi (MPa)		
Description of Fasteners	Nominal Tensile Strength, F_u , ksi (MPa) ^a	Nominal Shear Strength in Bearing-Type Connections, F_u , ksi (MPa) ^b
A307 bolts	45 (310)	27 (188) ⁽¹⁾⁽¹⁾
Group A (e.g., A325) bolts, where threads are not excluded from shear planes	90 (620)	54 (372)



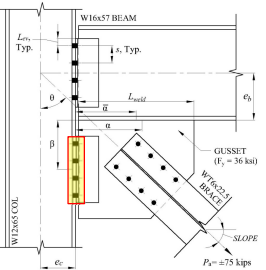
Example VB Corner Connection, I Gusset-to-Column (cont.)

Gusset-to-Column – Bolts (cont.):
 Check Shear and Tension (cont.):

$$\frac{r_t}{\Omega} = \frac{F'_t A_n}{\Omega} \quad (\text{AISC Spec I3-2})$$

$$= \frac{(90 \text{ ksi})(0.442 \text{ in.}^2)}{2}$$

$$= 19.9 \text{ kips} > T_{bolt} = 2.35 \text{ kips o.k.}$$



Example VB Corner Connection, I Gusset-to-Column (cont.)

Gusset-to-Column – Prying of Angles:

For connections to column webs, there is no tension force on the angle since $H_c = 0$ kips. For this example, which is to a column flange, however:

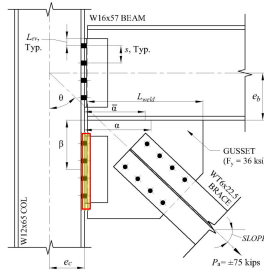
$$T_{bolt} = H_c / (2n) = 18.8 \text{ kips} / [(2)(4)] = 2.35 \text{ kips}$$

$$b = \text{gage}/2 - t_p/2 - t_d/2$$

$$= 5.5 \text{ in.}/2 - 0.375 \text{ in.}/2 - 0.375/2 = 2.38 \text{ in.}$$

$$b' = b - d_f/2 =$$

$$= 2.38 \text{ in.} - 0.75 \text{ in.}/2 = 2 \text{ in.}$$



Example VB Corner Connection, I Gusset-to-Column (cont.)

Gusset-to-Column – Prying of Angles (cont.):

$$a = [2(\text{angle OSL}) + t_p - \text{gage}]/2$$

$$= [2(4 \text{ in.}) + 0.375 \text{ in.} - 5.5 \text{ in.}]/2$$

$$= 1.44 \text{ in.}$$

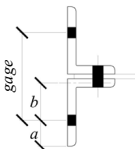
$$a' = a + d_f/2 \leq 1.25b + d_f/2$$

$$= 1.44 \text{ in.} + 0.75 \text{ in.}/2 \leq 1.25(2.38 \text{ in.}) + 0.75 \text{ in.}/2$$

$$= 1.82 \text{ in.} \leq 3.35 \text{ in.}$$

$$= 1.82 \text{ in.}$$

$$\rho = b' / a' = 2 \text{ in.} / 1.82 \text{ in.} = 1.10$$



Example VB Corner Connection, I Gusset-to-Column (cont.)

Gusset-to-Column – Prying of Angles (cont.):

$$p = L/n = 11.5 \text{ in.}/4$$

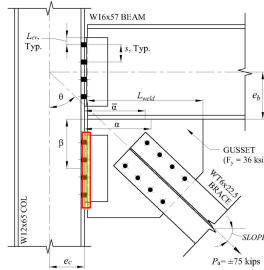
$$= 2.88 \text{ in. (tributary length per bolt)}$$

$$\delta = 1 - d' / p = 1 - 0.8125 \text{ in.}/2.88 \text{ in.}$$

$$= 0.717$$

$$B_c = r_t / \Omega$$

$$= 19.9 \text{ kips (bolt available tensile strength from previously)}$$



Example VB Corner Connection, I Gusset-to-Column (cont.)

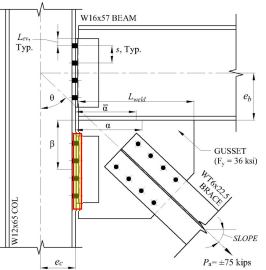
Gusset-to-Column – Prying of Angles (cont.):

$$t_c = \sqrt{\frac{\Omega_4 B b'}{p F_u}} \quad (\text{AISC Manual Eq. 9-26b})$$

$$= \sqrt{\frac{1.67(4)(19.9 \text{ kips})(2 \text{ in.})}{(2.88 \text{ in.})(58 \text{ ksi})}}$$

$$= 1.26 \text{ in.}$$

t_c = minimum thickness of angles to develop full available tensile strength of bolt with no prying



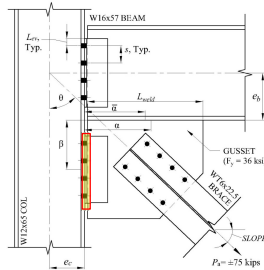
Example VB Corner Connection, I Gusset-to-Column (cont.)

Gusset-to-Column – Prying of Angles (cont.):

$$\alpha' = \frac{1}{\delta(1+\rho)} \left[\left(\frac{t_c}{t} \right)^2 - 1 \right] \quad (\text{AISC Manual Eq. 9-28})$$

$$= \frac{1}{0.717(1+1.10)} \left[\left(\frac{1.26 \text{ in.}}{0.375 \text{ in.}} \right)^2 - 1 \right]$$

$$= 6.83 \text{ in.}$$



Example VB Corner Connection, I Gusset-to-Column (cont.)

Gusset-to-Column – Prying of Angles (cont.):

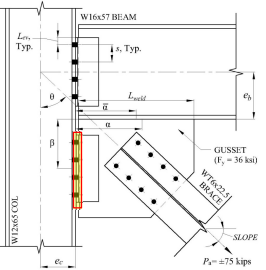
Note:
 When $\alpha' < 0$, this means that the fitting has sufficient strength and stiffness to develop the full bolt available tensile strength,

$$Q = 1$$

When $0 \leq \alpha' \leq 1$, this means that the fitting has sufficient strength and stiffness to develop the full bolt available tensile strength, but insufficient stiffness to prevent prying action,

$$Q = \left(\frac{t}{t_c} \right)^2 (1 + \delta \alpha')$$

(see AISC Manual Eq. 9-27)



Example VB Corner Connection, I Gusset-to-Column (cont.)

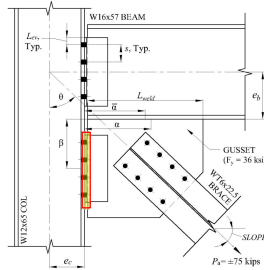
Gusset-to-Column – Prying of Angles (cont.):

For the example,
 $\alpha' = 6.83 > 1$
 This means that the angle has insufficient strength to develop the full bolt available tensile strength. Therefore,

$$Q = \left(\frac{t}{t_c} \right)^2 (1 + \delta)$$

$$= \left(\frac{0.375 \text{ in.}}{1.26 \text{ in.}} \right)^2 (1 + 0.717 \text{ in.})$$

$$= 0.152$$

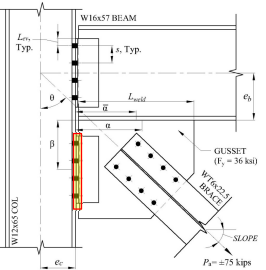


Example VB Corner Connection, I Gusset-to-Column (cont.)

Gusset-to-Column – Prying of Angles (cont.):

The available tensile strength including the effects of prying action, T_c , is:

$$T_c = B_c Q = (19.9 \text{ kips})(0.152) = 3.02 \text{ kips} > T_{bolt} = 2.35 \text{ kips} \text{ o.k.}$$



Example VB Corner Connection, I Gusset-to-Column (cont.)

Gusset-to-Column – Prying of Column Flange:

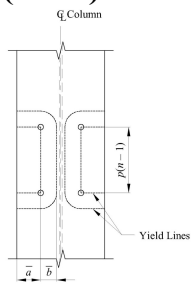
For connections to column webs, there is no tension force on the angle since $H_c = 0$ kips. For this example, which is to a column flange, use the following criteria:

Determine effective flange width

$$p_{eff} = [p(n-1) + \pi \bar{b} + 2\bar{a}] / n$$

(Ref Akbar Tamboli, *Handbook of Steel Connection Design and Details*, 2nd Ed.)

p = spacing = 3 in.
 Note: $\bar{a} = a$ and $\bar{b} = b$



(A.P. Mann and L.J. Morris, "Limit Design of Extended End-Plate Connections," *Journal of the Structural Division, ASCE*, Vol. 105, ST3, March 1979)



Example VB Corner Connection, I Gusset-to-Column (cont.)

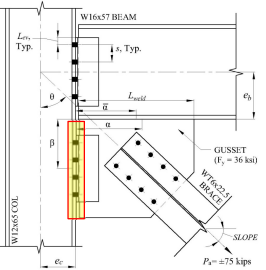
Gusset-to-Column – Prying of Column Flange (cont.):

$$\bar{b} = (\text{gage} - t_{wc}) / 2 = (5.5 \text{ in.} - 0.39 \text{ in.}) / 2 = 2.56 \text{ in.}$$

$$\bar{a} = (b_{fc} - \text{gage}) / 2 = (12 \text{ in.} - 5.5 \text{ in.}) / 2 = 3.25 \text{ in.}$$

$$p_{eff} = [p(n-1) + \pi \bar{b} + 2\bar{a}] / n = [(3 \text{ in.})(4-1) + (3.14)(2.56 \text{ in.}) + (2)(3.25 \text{ in.})] / 4 = 5.88 \text{ in.}$$

Note: use 3" max if at top of column



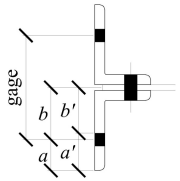
Example VB Corner Connection, I Gusset-to-Column (cont.)

Gusset-to-Column – Prying of Column Flange (cont.):

$$T_{bolt} = H_c / (2n) = 18.8 \text{ kips} / [(2)(4)] = 2.35 \text{ kips}$$

$$b = \text{gage} / 2 - t_{wc} / 2 = 5.5 \text{ in.} / 2 - 0.39 \text{ in.} / 2 = 2.56 \text{ in.}$$

$$b' = b - d_f / 2 = 2.56 \text{ in.} - 0.75 \text{ in.} / 2 = 2.18 \text{ in.}$$



Example VB Corner Connection, I Gusset-to-Column (cont.)

Gusset-to-Column – Prying of Column Flange
 (cont.):

$$a = \min\{(b_f - \text{gage})/2, a \text{ from angle calcs}\}$$

$$= \min\{(12 \text{ in.} - 5.5 \text{ in.})/2, 1.44 \text{ in.}\}$$

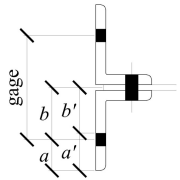
$$= 1.44 \text{ in.}$$

$$a' = a + d_f/2 \leq 1.25b + d_f/2$$

$$= 1.44 \text{ in.} + 0.75 \text{ in.}/2 \leq 1.25(2.56 \text{ in.}) + 0.75 \text{ in.}/2$$

$$= 1.82 \text{ in.} < 3.58 \text{ in.} \text{ Use } 1.82 \text{ in.}$$

$$\rho = b'/a' = 2.18 \text{ in.}/1.82 \text{ in.} = 1.20$$



Example VB Corner Connection, I Gusset-to-Column (cont.)

Gusset-to-Column – Prying of Column Flange
 (cont.):

$$p = p_{eff} = 5.88 \text{ in.}$$

$$\delta = 1 - d'/p = 1 - 0.8125 \text{ in.}/5.88 \text{ in.}$$

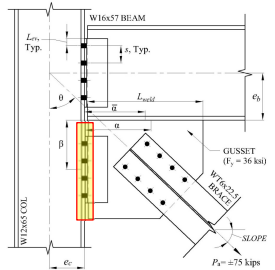
$$= 0.862$$

$$t_c = \sqrt{\frac{\Omega A B_c b'}{p F_u}} \quad (\text{AISC Manual Eq. 9-26b})$$

$$= \sqrt{\frac{1.67(4)(19.9 \text{ kips})(2.18 \text{ in.})}{(5.88 \text{ in.})(65 \text{ ksi})}}$$

$$= 0.871 \text{ in.}$$

→ check available strength of bolt including the effects of prying action



Example VB Corner Connection, I Gusset-to-Column (cont.)

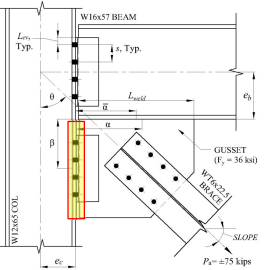
Gusset-to-Column – Prying of Column Flange
 (cont.):

$$\alpha' = \frac{1}{\delta(1+\rho)} \left[\left(\frac{t_c}{t} \right)^2 - 1 \right] \quad (\text{AISC Manual Eq. 9-28})$$

$$= \frac{1}{0.862(1+1.20)} \left[\left(\frac{0.871 \text{ in.}}{0.605 \text{ in.}} \right)^2 - 1 \right]$$

$$= 0.565 > 0 \text{ and } < 1.0$$

→ use $Q = \left(\frac{t}{t_c} \right)^2 (1 + \delta\alpha')$



Example VB Corner Connection, I Gusset-to-Column (cont.)

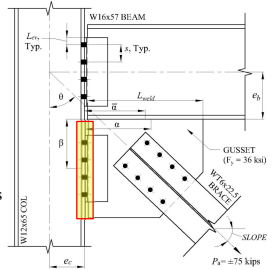
Gusset-to-Column – Prying of Column Flange
 (cont.):

$$Q = \left(\frac{t}{t_c} \right)^2 (1 + \delta\alpha')$$

$$= \left(\frac{0.605 \text{ in.}}{0.871 \text{ in.}} \right)^2 [1 + (0.862)(0.565)]$$

$$= 0.717$$

The available strength of bolt including prying is
 $T_c = B_c Q = (19.9 \text{ kips})(0.717)$
 $= 14.3 \text{ kips} > T_{bolt} = 2.35 \text{ kips o.k.}$



Example VB Corner Connection, I Gusset-to-Column (cont.)

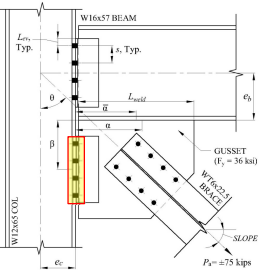
Gusset-to-Column – Bolt Bearing:

$$R_n = 2.4dtF_u \quad \text{AISC Specification Eq. J3-6a}$$

$$R_n = 1.2l_tF_u \quad \text{AISC Specification Eq. J3-6c}$$

AISC Bolt Shear:
 $r_v/\Omega = 11.9$ kips

Column Bolt Bearing:
 $R_{brg(col)}/\Omega = 2.4d_b t_f F_u / \Omega$
 $= 2.4(0.75 \text{ in.})(0.605 \text{ in.})(65 \text{ ksi})/2$
 $= 35.4$ kips

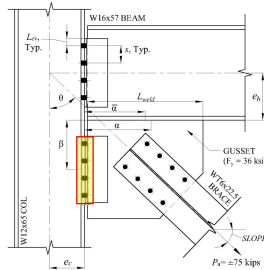


Example VB Corner Connection, I Gusset-to-Column (cont.)

Gusset-to-Column – Bolt Bearing (cont.):

Column Bolt Tear Out (Center):
 $R_{tear(col_C)}/\Omega = 1.2(s - d_{h_w})t_f F_u / \Omega$
 $= 1.2(3 \text{ in.} - 13/16 \text{ in.})$
 $\times (0.605 \text{ in.})(65 \text{ ksi})/2$
 $= 51.6$ kips

Angle Bolt Bearing:
 $R_{brg(L)}/\Omega = 2.4d_b t_a F_u / \Omega$
 $= 2.4(0.75 \text{ in.})(0.375 \text{ in.})(58 \text{ ksi})/2$
 $= 19.6$ kips

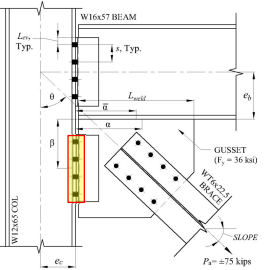


Example VB Corner Connection, I Gusset-to-Column (cont.)

Gusset-to-Column – Bolt Bearing (cont.):

Angle Bolt Tear Out (Edge):
 $R_{tear(L_E)}/\Omega = 1.2(L_{ev} - d_{h_w}/2)t_a F_u / \Omega$
 $= 1.2(1.25 \text{ in.} - 13/16 \text{ in.}/2)$
 $\times (0.375 \text{ in.})(58 \text{ ksi})/2$
 $= 11.0$ kips

Angle Bolt Tear Out (Center):
 $R_{tear(L_C)}/\Omega = 1.2(s - d_{h_w})t_a F_u / \Omega$
 $= 1.2(3 \text{ in.} - 13/16 \text{ in.})(0.375 \text{ in.})$
 $\times (58 \text{ ksi})/2$
 $= 28.6$ kips



Example VB Corner Connection, I Gusset-to-Column (cont.)

Gusset-to-Column – Bolt Bearing (cont.):

$$R_{n(top)}/\Omega = \min\{r_v/\Omega, R_{brg(col)}/\Omega, R_{tear(col_C)}/\Omega, R_{brg(L)}/\Omega, R_{tear(L_C)}/\Omega\}$$

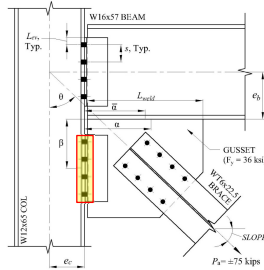
$$= \min\{11.9 \text{ kips}, 35.4 \text{ kips}, 51.6 \text{ kips}, 19.6 \text{ kips}, 28.6 \text{ kips}\}$$

$$= 11.9 \text{ kips}$$

$$R_{n(center)}/\Omega = \min\{r_v/\Omega, R_{brg(col)}/\Omega, R_{tear(col_C)}/\Omega, R_{brg(L)}/\Omega, R_{tear(L_C)}/\Omega\}$$

$$= \min\{11.9 \text{ kips}, 35.4 \text{ kips}, 51.6 \text{ kips}, 19.6 \text{ kips}, 28.6 \text{ kips}\}$$

$$= 11.9 \text{ kips}$$



Example VB Corner Connection, I Gusset-to-Column (cont.)

Gusset-to-Column – Bolt Bearing (cont.):

$$R_{n(bot)}/\Omega = \min \{ r/\Omega, R_{brg(col)}/\Omega, R_{tear(col_C)}/\Omega, R_{brg(L)}/\Omega, R_{tear(L_E)}/\Omega \}$$

$$= \min \{ 11.9 \text{ kips}, 35.4 \text{ kips}, 51.6 \text{ kips}, 19.6 \text{ kips}, 11.0 \text{ kips} \}$$

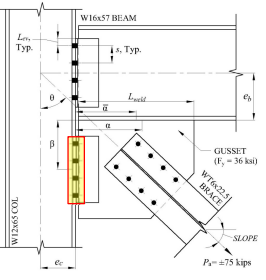
$$= 11.0 \text{ kips}$$

Total Bolt Strength

$$R_n/\Omega = [R_{n(top)}/\Omega + (R_{n(center)}/\Omega)(n-2) + R_{n(bot)}/\Omega](2 \text{ lines})$$

$$= [11.9 \text{ kips} + (11.9 \text{ kips})(4-2) + 11.0 \text{ kips}](2)$$

$$= 93.4 \text{ kips} > V_c = 26.3 \text{ kips o.k.}$$



Example VB Corner Connection, I Gusset-to-Column (cont.)

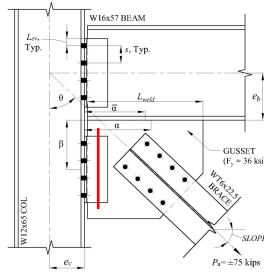
Gusset-to-Column – Angle Gross Shear:

AISC Specification Eq. J4-3

$$\frac{R_n}{\Omega} = \frac{0.6F_y A_g}{\Omega}$$

$$= \frac{0.6(36 \text{ ksi})(11.5 \text{ in.})(0.375 \text{ in.})}{1.5}$$

$$= 124 \text{ kips} > V_c = 26.3 \text{ kips o.k.}$$



Example VB Corner Connection, I Gusset-to-Column (cont.)

Gusset-to-Column – Angle Net Shear:

AISC Specification Eq. J4-4

$$L_{nv} = L_{eff} - n(d_{h,width} + 1/16 \text{ in.})$$

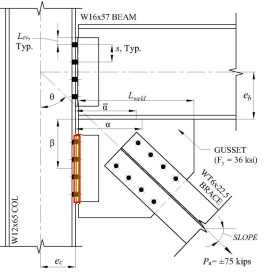
$$= 11.5 \text{ in.} - 4(13/16 \text{ in.} + 1/16 \text{ in.})$$

$$= 8 \text{ in.}$$

$$\frac{R_n}{\Omega} = \frac{0.6F_u A_{nv}}{\Omega}$$

$$= \frac{0.6(58 \text{ ksi})(2)(8 \text{ in.})(0.375 \text{ in.})}{2}$$

$$= 104 \text{ kips} > V_c = 26.3 \text{ kips o.k.}$$



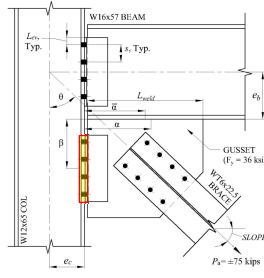
Example VB Corner Connection, I Gusset-to-Column (cont.)

Gusset-to-Column – Block Shear of Angles

OSL:

Calculations for block shear of angles are similar to those done in this example for the WT brace to gusset connection.

The actual calculations will be contained in Appendix 2 which is available with the handouts for this session.



Example VB Corner Connection, I Gusset-to-Column (cont.)

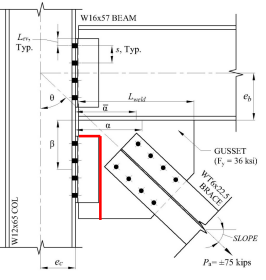
Gusset-to-Column – Block Shear of Gusset
 for vertical force (V_c):
 AISC Spec Section J4.3 Block Shear Strength

$$\Omega = 2.00$$

$$R_n = 0.6F_u A_{nv} + U_{bs} F_u A_{nt} \leq 0.6F_y A_{gv} + U_{bs} F_u A_{nt}$$

Shear Rupture = $0.6F_u A_{nv}$
 Shear Yield = $0.6F_y A_{gv}$
 Tension Rupture = $F_u A_{nt}$

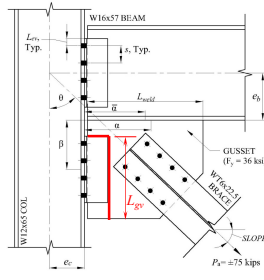
$U_{bs} = 1.0$ for Direct Loaded Connections



Example VB Corner Connection, I Gusset-to-Column (cont.)

Gusset-to-Column – Block Shear of Gusset:
 Gusset is welded

For Shear check:
 $L_{gv} = 14.25$ in. (from geometric layout)
 $L_{gt} = k = 3.5$ in.
 $L_{nv} = 14.25$ in.
 $L_{nt} = k = 3.5$ in.



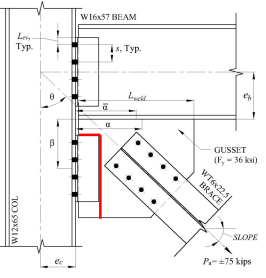
Example VB Corner Connection, I Gusset-to-Column (cont.)

Gusset-to-Column – Block Shear of Gusset
 (cont.):

$$A_{gv} = L_{gv} t_p = (14.25 \text{ in.})(0.375 \text{ in.}) = 5.34 \text{ in.}^2$$

$$A_{nv} = L_{nv} t_p = (14.25 \text{ in.})(0.375 \text{ in.}) = 5.34 \text{ in.}^2$$

$$A_{nt} = L_{nt} t_p = (3.5 \text{ in.})(0.375 \text{ in.}) = 1.31 \text{ in.}^2$$



Example VB Corner Connection, I Gusset-to-Column (cont.)

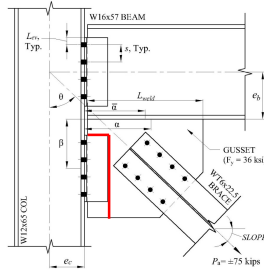
Gusset-to-Column – Block Shear of Gusset
 (cont.):

$$R_n = \min \left[\begin{aligned} &0.6(58 \text{ ksi})(5.34 \text{ in.}^2) = 185.83 \text{ kips} \\ &0.6(36 \text{ ksi})(5.34 \text{ in.}^2) = 115.34 \text{ kips} \end{aligned} \right]$$

$$+ [(58 \text{ ksi})(1.31 \text{ in.}^2)]$$

$$= 115.34 \text{ kips} + 75.98 \text{ kips} = 191.32 \text{ kips}$$

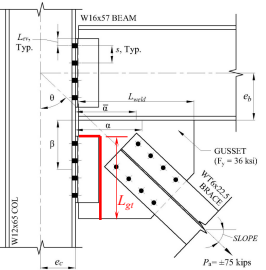
$$R_n / \Omega = (191.32 \text{ kips}) / 2 = 96 \text{ kips} > V_c = 26.3 \text{ kips o.k.}$$



Example VB Corner Connection, I Gusset-to-Column (cont.)

Gusset-to-Column – Block Shear of Gusset for horizontal force (H_c):
 Gusset is welded

For Axial check:
 $L_{gv} = k = 3.5$ in.
 $L_{gt} = 14.25$ in. (from geometric layout)
 $L_{nv} = k = 3.5$ in.
 $L_{nt} = 14.25$ in.



89

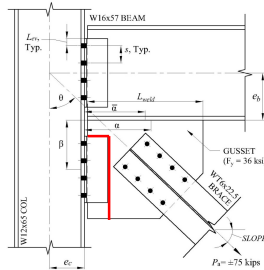
Example VB Corner Connection, I Gusset-to-Column (cont.)

Gusset-to-Column – Block Shear of Gusset (cont.):

$$A_{gv} = L_{gv} t_p = (3.5 \text{ in.})(0.375 \text{ in.}) = 1.31 \text{ in.}^2$$

$$A_{nv} = L_{nv} t_p = (3.5 \text{ in.})(0.375 \text{ in.}) = 1.31 \text{ in.}^2$$

$$A_{nt} = L_{nt} t_p = (14.25 \text{ in.})(0.375 \text{ in.}) = 5.34 \text{ in.}^2$$



90

Example VB Corner Connection, I Gusset-to-Column (cont.)

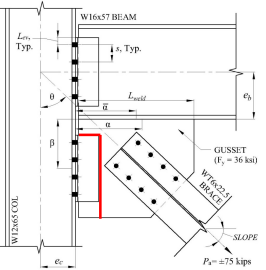
Gusset-to-Column – Block Shear of Gusset (cont.):

$$R_n = \min \left[\begin{aligned} &0.6(58 \text{ ksi})(1.31 \text{ in.}^2) = 45.59 \text{ kips} \\ &0.6(36 \text{ ksi})(1.31 \text{ in.}^2) = 28.30 \text{ kips} \end{aligned} \right]$$

$$+ [1(58 \text{ ksi})(5.34 \text{ in.}^2)]$$

$$= 28.30 \text{ kips} + 309.72 \text{ kips} = 338.02 \text{ kips}$$

$$R_n / \Omega = (338.02 \text{ kips}) / 2 = 169 \text{ kips} > H_c = 18.8 \text{ kips} \text{ o.k.}$$



91

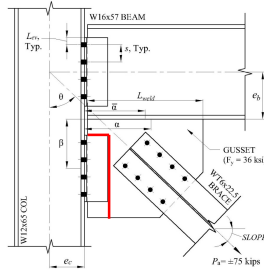
Example VB Corner Connection, I Gusset-to-Column (cont.)

Gusset-to-Column – Block Shear of Gusset (cont.):

Unity Check (Sum of Squares):

$$\left(\frac{V_c}{R_{nv} / \Omega} \right)^2 + \left(\frac{H_c}{R_{nt} / \Omega} \right)^2 \leq 1.0$$

$$\left(\frac{26.3 \text{ kips}}{96 \text{ kips}} \right)^2 + \left(\frac{18.8 \text{ kips}}{169 \text{ kips}} \right)^2 = 0.09 < 1.0 \text{ o.k.}$$



92

Example VB Corner Connection, I Gusset-to-Column (cont.)

Gusset-to-Column – Size Weld:

$$P_c = \sqrt{(H_c)^2 + (V_c)^2}$$

$$= \sqrt{(18.8 \text{ kips})^2 + (26.3 \text{ kips})^2}$$

$$= 32.3 \text{ kips}$$

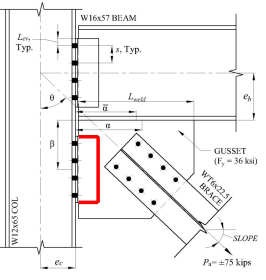
$$\theta = \tan^{-1}(H_c/V_c) = \tan^{-1}(18.8 \text{ kips}/26.3 \text{ kips})$$

$$= 35.6^\circ$$

$$l = s(n - 1) + 2L_{ev}$$

$$= (3 \text{ in.})(4 - 1) + 2(1.25 \text{ in.})$$

$$= 11.5 \text{ in.}$$



Example VB Corner Connection, I Gusset-to-Column (cont.)

Gusset-to-Column – Size Weld (cont.):

$$kl = 3.5 \text{ in.}$$

$$k = kl/l = 3.5 \text{ in.}/11.5 \text{ in.} = 0.304$$

$$x = 0.057$$

$$a = [(al - x)/l]$$

$$= [4 \text{ in.} - 0.057(11.5 \text{ in.})]/11.5 \text{ in.}$$

$$= 0.29$$

C = 2.96 (AISC Manual Table 8-8 with Angle = 30°)

AISC Manual
 Table 8-8 (continued)
 Coefficients, C,
 for Eccentrically Loaded Weld Groups
 Angle = 30°

a	k											
	0	0.1	0.2	0.3	0.4	0.5	0.6	0.7	0.8	0.9	1.0	1.2
0.00	0.18	2.76	3.21	3.73	4.34	4.78	5.27	5.78	6.30	6.81	7.28	8.05
0.10	2.02	2.57	3.10	3.62	4.14	4.67	5.19	5.71	6.23	6.75	7.28	8.32
0.15	1.92	2.45	2.95	3.47	3.98	4.49	5.00	5.52	6.03	6.54	7.05	8.09
0.20	1.82	2.29	2.78	3.28	3.78	4.29	4.77	5.27	5.77	6.27	6.78	7.78
0.25	1.71	2.15	2.63	3.10	3.58	4.06	4.53	5.01	5.49	5.97	6.46	7.45
0.30	1.61	2.01	2.45	2.91	3.37	3.83	4.29	4.75	5.21	5.68	6.15	7.11
x	0.000	0.000	0.056	0.089	0.122	0.154	0.204	0.246	0.288	0.333	0.424	



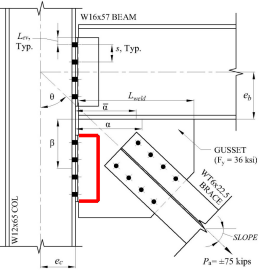
Example VB Corner Connection, I Gusset-to-Column (cont.)

Gusset-to-Column – Size Weld (cont.):
 C₁ = 1.0 for E70 (AISC Manual Table 8-3)

AISC Manual

Table 8-3
 Electrode Strength Coefficient, C₁

Electrode	F _{EXX} (ksi)	C ₁
E60	60	0.857
E70	70	1.00
E80	80	1.03
E90	90	1.16
E100	100	1.21
E110	110	1.34



Example VB Corner Connection, I Gusset-to-Column (cont.)

Gusset-to-Column – Size Weld (cont.):

$$D_{min} = P_c \Omega / (2CC_1L)$$

$$= 32.3 \text{ kips} / ((2)(2.96)(1.0)(11.5 \text{ in.}))$$

$$= 0.949 < 4 \text{ (16th of an inch)}$$

¼" fillet weld o.k.

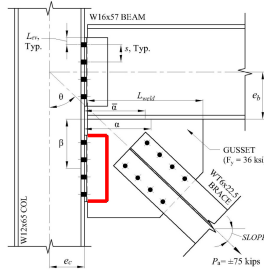
$$t_{min} = 2(0.928D_{min}) / [0.6(F_u/\Omega)]$$

$$= 2(0.928)(0.949) / [0.6(58 \text{ ksi}/2)]$$

$$= 0.101 \text{ in.} < t_p = 0.375 \text{ in. o.k.}$$

Note, the above is same as Manual Eq 9-3:

$$t_{min} = 6.19D/F_u$$

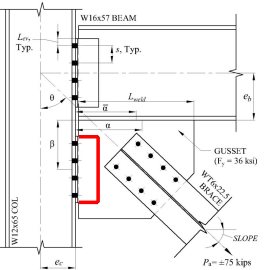


Example VB Corner Connection, I Gusset-to-Column (cont.)

Gusset-to-Column – Size Weld (cont.):

If $t_{min} < t_p$, no reduction necessary.

$$\text{If } t_{min} > t_p, \frac{R_w}{\Omega} = \left(\frac{R_w}{\Omega} \right) \left(\frac{t_p}{t_{min}} \right)$$



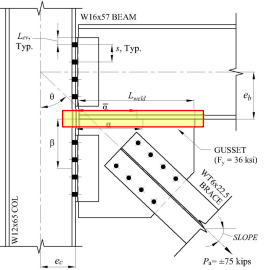
Example VB Corner Connection, I Gusset-to-Beam



Example VB Corner Connection, I Gusset-to-Beam

The gusset-to-beam will be designed by doing the following:

- a. Size weld between gusset and beam
- b. Check gusset for shear and tension at weld line
- c. Check beam web yielding
- d. Check local beam web crippling

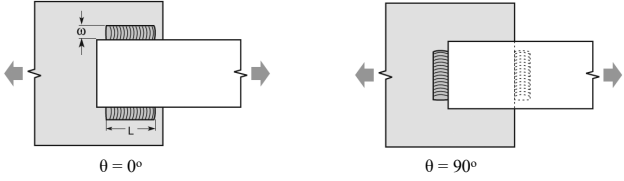


Design of Fillet Welds

Section J2.4(b) allows the directional strength increase for linear weld groups.
 $R_w = F_w A_{we}$ (AISC Specification Eq. J2-4)

$$F_w = 0.6 F_{EXX} (1.0 + 0.5 \sin^{1.5} \theta) \quad (\text{AISC Specification Eq. J2-5})$$

F_{EXX} = electrode classification number, i.e., minimum specified tensile strength, ksi
 θ = angle of loading measured from the weld longitudinal axis, degrees



Design of Fillet Welds

Again, this is more commonly written:

For ASD: $R_n/\Omega = 0.928(1.0 + 0.5 \sin^{1.5}\theta)DL$

For LRFD: $\phi R_n = 1.392(1.0 + 0.5 \sin^{1.5}\theta)DL$



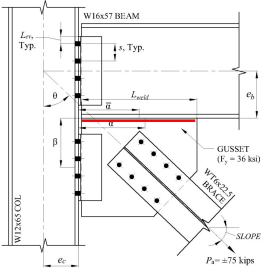
Example VB Corner Connection, I Gusset-to-Beam (cont.)

Gusset-to-Beam – Size Weld:

$f_x = H_y/L_{weld} = 35.6 \text{ kips}/20 \text{ in.}$
 $= 1.78 \text{ kips/in.}$

$f_y = V_y/L_{weld} = 25.4 \text{ kips}/20 \text{ in.}$
 $= 1.27 \text{ kips/in.}$

$f'_y = 4M_y/L_{weld}^2$
 $= 4(25.4 \text{ kip-in.})/(20 \text{ in.})^2$
 $= 0.254 \text{ kips/in.}$



Example VB Corner Connection, I Gusset-to-Beam (cont.)

Gusset-to-Beam – Size Weld (cont.):

$$f_{peak} = \sqrt{(f_x)^2 + (f_y + f'_y)^2}$$

$$= \sqrt{(1.78 \text{ k/in.})^2 + (1.27 \text{ k/in.} + 0.254 \text{ k/in.})^2}$$

$$= 2.34 \text{ kips/in.}$$

$$1.25 f_{avg} = (1.25) \left(\frac{1}{2} \right) \left[\sqrt{(f_x)^2 + (f_y + f'_y)^2} + \sqrt{(f_x)^2 + (f_y - f'_y)^2} \right]$$

$$= (1.25) \left(\frac{1}{2} \right) \left[\sqrt{(1.78 \text{ k/in.})^2 + (1.27 \text{ k/in.} + 0.254 \text{ k/in.})^2} \right.$$

$$\quad \left. + \sqrt{(1.78 \text{ k/in.})^2 + (1.27 \text{ k/in.} - 0.254 \text{ k/in.})^2} \right]$$

$$= 2.75 \text{ kips/in.}$$



Example VB Corner Connection, I Gusset-to-Beam (cont.)

Gusset-to-Beam – Size Weld (cont.):

$\theta = \tan^{-1} [(f_y + f'_y)/f_x]$
 $= \tan^{-1} [(1.27 \text{ kips/in.} + 0.254 \text{ kips/in.})/1.78 \text{ kips/in.}]$
 $= 40.6^\circ$

$f_w = 0.60(F_{EXX}/\Omega)(0.707D/16)(1.0 + 0.50 \sin^{1.5}\theta)$
 $= 0.928D (1.0 + 0.50 \sin^{1.5} 40.6^\circ)$
 $= 0.928D(1.26)$



Example VB Corner Connection, I Gusset-to-Beam (cont.)

Gusset-to-Beam – Size Weld (cont.):

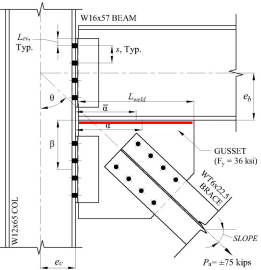
$$D_{min} = \max(f_{peak}, 1.25f_{avg}) / [f_w(2 \text{ sides})]$$

$$= \max(2.34 \text{ kips/in.}, 2.75 \text{ kips/in.}) / [0.928(1.26)(2)]$$

$$= 1.18 < 4 \text{ (16th on an inch) o.k.}$$

(1/4" fillet provided)

Also, per AISC Specification Table J2.4, minimum size fillet weld for 3/8" gusset = 3/16" < 1/4" o.k.



Example VB Corner Connection, I Gusset-to-Beam (cont.)

Gusset-to-Beam – Check Gusset:

Shear:

$$t_{min(gusset)} = f_x' / [0.6(F_y / \Omega)]$$

$$= (1.78 \text{ kips/in.}) / [0.6(36 \text{ ksi} / 1.5)]$$

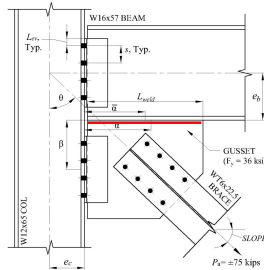
$$= 0.124 \text{ in.} < t_p = 0.375 \text{ in. o.k.}$$

Tension:

$$t_{min(gusset)} = (f_x' + f_y') / (F_y / \Omega)$$

$$= (1.27 \text{ k/in.} + 0.254 \text{ k/in.}) / (36 \text{ ksi} / 1.67)$$

$$= 0.071 \text{ in.} < t_p = 0.375 \text{ in. o.k.}$$



Example VB Corner Connection, I Gusset-to-Beam (cont.)

Gusset-to-Beam – Beam Web Yielding:

$$P_{equival} = 2[M_b / (L_{weld} / 2)] + V_b$$

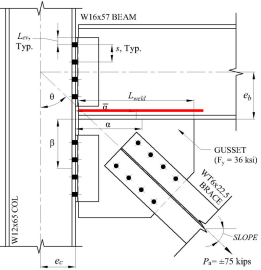
$$= 2[25.4 \text{ k-in.} / (20 \text{ in.} / 2)] + 25.4 \text{ kips}$$

$$= 30.5 \text{ kips for full weld length}$$

$$R_n / \Omega = t_w(L_{weld} + 2.5k)(F_y / \Omega)$$

$$= (0.43 \text{ in.})[20 \text{ in.} + 2.5(1.12 \text{ in.})] \times (50 \text{ ksi} / 1.5)$$

$$= 327 \text{ kips} > 30.5 \text{ kips o.k.}$$



Example VB Corner Connection, I Gusset-to-Beam (cont.)

Gusset-to-Beam – Local Beam Web Crippling:

$P_{equival} = 30.5 \text{ kips for full weld length (from beam web yielding calcs)}$

$$\frac{R_n}{\Omega} = \frac{0.80t_w^2 \left[1 + 3 \left(\frac{L_{weld}}{d} \right) \left(\frac{t_w}{t_f} \right)^{1.5} \right] \sqrt{\frac{EF_y t_f}{t_w}}}{\Omega} Q_f \quad \text{AISC Specification Eq. J10-4}$$

$$= \frac{\left[\frac{0.80(0.43 \text{ in.})^2}{2} \left[1 + 3 \left(\frac{20 \text{ in.}}{16.4 \text{ in.}} \right) \left(\frac{0.43 \text{ in.}}{0.715 \text{ in.}} \right)^{1.5} \right] \times \sqrt{\frac{(29,000 \text{ ksi})(50 \text{ ksi})(0.715 \text{ in.})}{0.43 \text{ in.}}} \right]}{2} (1.0)$$

$$= 311 \text{ kips} > 30.5 \text{ kips o.k.}$$



Example VB Corner Connection, I Beam-to-Column

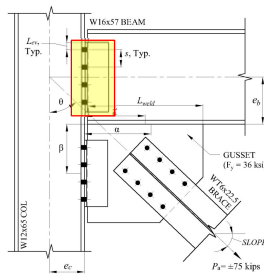


109

Example VB Corner Connection, I Beam-to-Column

Finally, the beam-to-column will be designed, checking the beam end as a shear and axially loaded end connection.

- Check bolts at column flange
- Check prying of angles and column flanges
- Check bolt bearing and tearout of angles and column flange
- Check gross and net section shear and block shear for angles
- Check block shear of beam
- Check angle welds



110

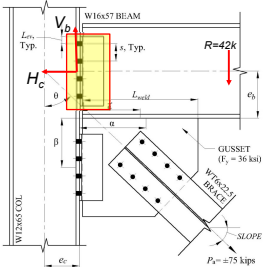
Example VB Corner Connection, I Beam-to-Column (cont.)

Beam-to-Column – Forces:

$V_b = 25.4$ kips
 $R = 42$ kips

Calculations for this connection (shown in yellow) are similar to those done in this example for the gusset to column connection.

The actual calculations will be contained in Appendix 3 which is available with the handouts for this session.



111

Vertical Brace Example

If either the gusset-to-column connection or the beam-to-column cannot be made to work economically, it may be necessary to change the force distribution. This can be done by:

- Changing the dimensions of the gusset plate.
- Using ΔV_b to change the distribution of the vertical brace component – Special Case II.
- Try using Special Case V (Bypass Method) which will be discussed next week (Session 5)



112

Economy of Vertical Bracing Connections

- Use the Uniform Force Method.
- Use W12 or W14 columns as a minimum where possible.
- Use W18 beams as a minimum.
- Use same depth beams either side of the column when transfer forces exist.



Economy of Vertical Bracing Connections

- Consider net section capacity when sizing brace members.
- Provide actual loads (tension and compression).



Summary



Summary

- Example of a corner vertical bracing connection was reviewed for a Wind and Low-Seismic condition
 - Began the example with the brace-to-gusset design
 - Gusset dimensions were determined based on the brace-to-gusset connection
 - The gusset-to-column connection including prying action was checked
 - Followed by the gusset-to-beam connection
 - Finally, the beam-to-column connection, also including prying action, was checked



Questions?



Thank you!

AISC | Questions



Individual Session Registrants

PDH Certificates

- All WFH individuals associated with a group registration will be issued a certificate.
- All individuals attending at your connection: you will receive an email on how to report their attendance from: registration@aisc.org.
 - Be on the lookout: Check your spam filter! Check your junk folder!
 - Completely fill out online form. Don't forget to check the boxes next to each attendee's name!



8-Session Registrants

PDH Certificates

One certificate will be issued at the conclusion of all 8 sessions.



8-Session Registrants

Access to the quiz

Information for accessing the quiz will be emailed to you by Wednesday. It will contain a link to access the quiz. EMAIL COMES FROM NIGHTSCHOOL@AISC.ORG.

Quiz and attendance records

Posted Friday mornings. www.aisc.org/nightschool -- Click on Current Course Details.

Reasons for quiz

- EEU – You must take all quizzes and the final exam to receive EEU.
- PDHs – If you watch a recorded session, you must pass quiz for PDHs.
- REINFORCEMENT – Reinforce what you learn tonight. Get more out of the course.

Note: If you attend the live presentation, you do not have to take the quizzes to receive PDHs



8-Session Registrants

Access to the recording

Information for accessing the recording will be emailed to you by Wednesday. The recording will be available for four weeks. (For 8-session registrants only.) EMAIL COMES FROM NIGHTSCHOOL@AISC.ORG.

PDHs via recording

If you watch a recorded session, you must take *and pass* the quiz for PDHs.



8-Session Registrants

Night School Resources

Find all your handouts, quizzes and quiz scores, recording access, and attendance information all in one place!



8-Session Registrants

Night School Resources

Go to www.aisc.org and sign in.

The screenshot shows the AISC website's navigation menu and a login section. The navigation menu includes: EDUCATION, PUBLICATIONS, NASCC-THE STEEL CONFERENCE, SAFETY, STEEL SOLUTIONS CENTER, AWARDS AND COMPETITIONS, and RESEARCH LIBRARY. Below the menu is a large banner with the AISC logo and the text 'AISC'. Underneath the banner is a 'Login' section with the text 'If you're an existing customer, please enter your username and password.' The login form has two input fields: 'USERNAME' (with the placeholder 'Enter your username') and 'PASSWORD' (with the placeholder 'Enter your password'). There is a 'Remember Me' checkbox below the password field. To the right of the login form is a 'DON'T HAVE AN ACCOUNT?' section with the text 'My AISC allows you to access Engineering Journal articles and Design Guides you have downloaded from the bookstore.' and a blue 'REGISTER NOW' button.

8-Session Registrants

Night School Resources

Go to www.aisc.org and sign in.

IN THIS SECTION

- My Profile
- My Downloads
- My Pending Orders
- My Events
- Order History
- Course History
- Course Resources**

MyAISC

MY PROFILE
 Update your contact and address information.
[EDIT PROFILE](#)

MY PURCHASED DOWNLOADS
 Access articles and documents that you have purchased.
[VIEW DOWNLOADS](#)

MY COURSE RESOURCES
 View online resources for Night School and Live Webinar package registrants.
[VIEW RESOURCES](#)

8-Session Registrants

Night School Resources

Course Resources

Event	Start Date
NS 13 8-Session Package Night School 13 - Design of Industrial Buildings	6/29/2017 7:00:00 PM
NS 14 8-Session Package Night School 14 - Fundamentals of Stability	6/5/2017 7:00:00 PM

8-Session Registrants

Night School Resources

Night School 13: Design of Industrial Buildings

8-SESSION PACKAGE RESOURCES

Event	Date	Handouts	Video	Quiz	Attendance
NS13 - Design Criteria	1/30/2017 7:00:00 PM	Missing	Missing	Pass Score: 80	Pending
NS13 - Economic Considerations	2/6/2017 7:00:00 PM	Missing	Available 02/06/2017 5pm EST	Available 02/06/2017 5pm EST	Pending
NS13 - Lateral Load Systems and Details	2/13/2017 7:00:00 PM	Missing	Available 02/13/2017 5pm EST	Available 02/13/2017 5pm EST	Pending
NS13 - Preliminary Design Procedures	2/20/2017 7:00:00 PM	Missing	Available 02/20/2017 5pm EST	Available 02/20/2017 5pm EST	Pending
NS13 - Crane Girder Design and Frame Analysis	3/6/2017 7:00:00 PM	Missing	Available 03/06/2017 5pm EST	Available 03/06/2017 5pm EST	Pending
NS13 - Frame Member and Connection Design	3/13/2017 7:00:00 PM	Missing	Available 03/13/2017 5pm EST	Available 03/13/2017 5pm EST	Pending
NS13 - Transfer Crane Girder & Longitudinal Bldg Bracing Dev	3/27/2017 7:00:00 PM	Missing	Available 03/27/2017 5pm EST	Available 03/27/2017 5pm EST	Pending
NS13 - Building Overlap and Bracing Design	4/3/2017 7:00:00 PM	Missing	Available 04/03/2017 5pm EST	Available 04/03/2017 5pm EST	Pending

8-Session Registrants

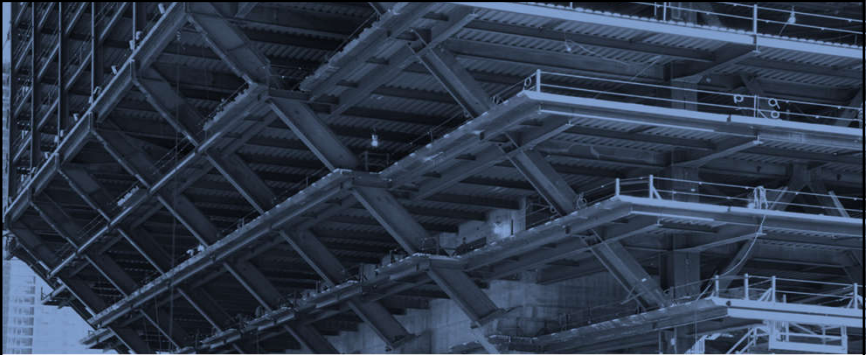
Night School Resources

- Weekly “quiz and recording” email.
- Weekly updates of the master quiz and attendance record, found at www.aisc.org/nightschool28. Scroll down to Quiz and Attendance records.
 - Updated on Friday mornings.

8-Session Registrants

Night School Resources

- Webinar connection information
 - Reminder email sent out Monday mornings
- Links to handouts also found here



AISC | Thank you

